



## Athelstan Road, Exeter, EX1 1SB

Welcome to this charming flat located on Athelstan Road in the vibrant city of Exeter. This delightful property features two well-proportioned bedrooms, making it an ideal choice for couples, small families, or individuals seeking extra space. The flat also boasts a modern bathroom, designed for both comfort and convenience.

Situated in a desirable area, this flat offers easy access to local amenities, including shops, cafes, and parks, ensuring that everything you need is just a short stroll away. The surrounding neighbourhood is known for its friendly atmosphere and community spirit, making it a wonderful place to call home.

The flat itself is designed with practicality in mind, providing a comfortable living space that is both functional and inviting. Whether you are entertaining guests or enjoying a quiet evening in, this property offers the perfect backdrop for your lifestyle.

With its prime location and appealing features, this flat on Athelstan Road presents an excellent opportunity for those looking to settle in Exeter. Do not miss the chance to make this lovely property your new home.

EPC Rating: C - Deposit: £1384 - Council Tax Band: A - Available for a long let.

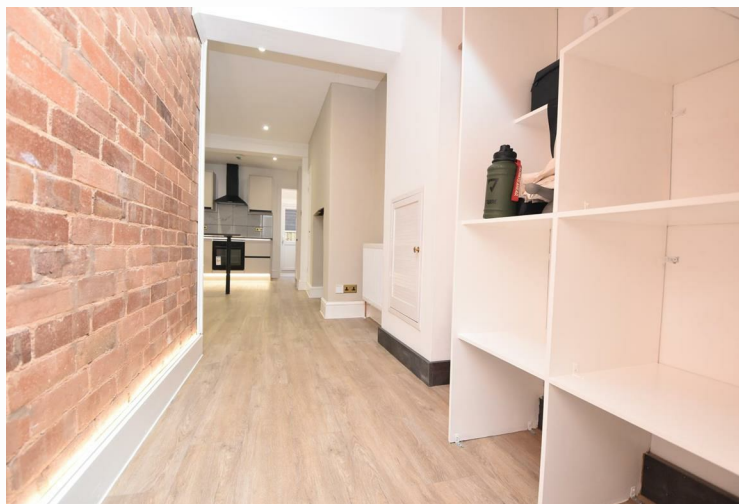
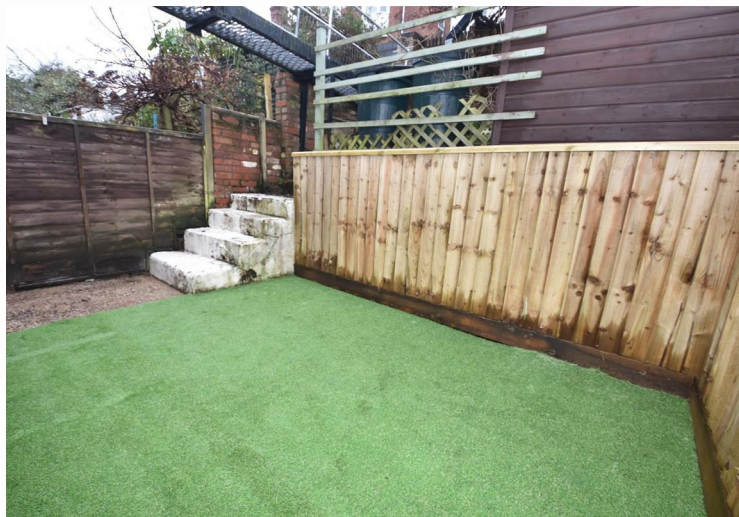
## £1,200 PCM



- Council Tax Band: A
- Deposit: £1384
- Long Term Let
- Holding deposit: £276
- Close to City Centre
- White Goods Included
- Gas CH
- Garden
- Parking Permits







11 High Street

Cullompton

Devon

EX15 1AB

T: 01884 33333

**After Hours:** 07802 448363

E: [enquiries@thornecarterandaspen.co.uk](mailto:enquiries@thornecarterandaspen.co.uk)

These particulars are intended as a general guide only and do not form any part of a contract. Every effort has been made to ensure that they are fair and accurate, however, if you have any uncertainty then please contact our offices for clarification