



Bramble Way, Old Basing, Basingstoke, RG24 7JS
£375,000



Bramble Way, Old Basing, Basingstoke, RG24 7JS

NO ONWARD CHAIN - CHEQUERS are pleased to offer for sale this bungalow situated in the heart of Old Basing. The accommodation includes entrance hall, living room, kitchen, conservatory, two double bedrooms and a wet room. Further benefits include gardens, garage and off road parking. Whilst requiring modernisation, viewing is recommended to appreciate the position. (draft particulars - awaiting vendors approval).

Chequers will recommend the services of other businesses and may receive a referral fee in some instances where a buyer or seller uses the services of that company.

ENTRANCE HALL:

WET ROOM:

KITCHEN/DINING ROOM:

17'9" x 9' (5.41m x 2.74m)

LIVING ROOM:

17'9" x 11'1" (5.41m x 3.38m)

BEDROOM ONE:

14'1" x 9'6" (4.29m x 2.90m)

BEDROOM TWO:

11'8" x 8'7" (3.56m x 2.65m)

CONSERVATORY:

10'11" x 7'3" (3.33m x 2.21m)

GARAGE:

32'2" x 8'5" (9.80m x 2.57m)

GARDENS:

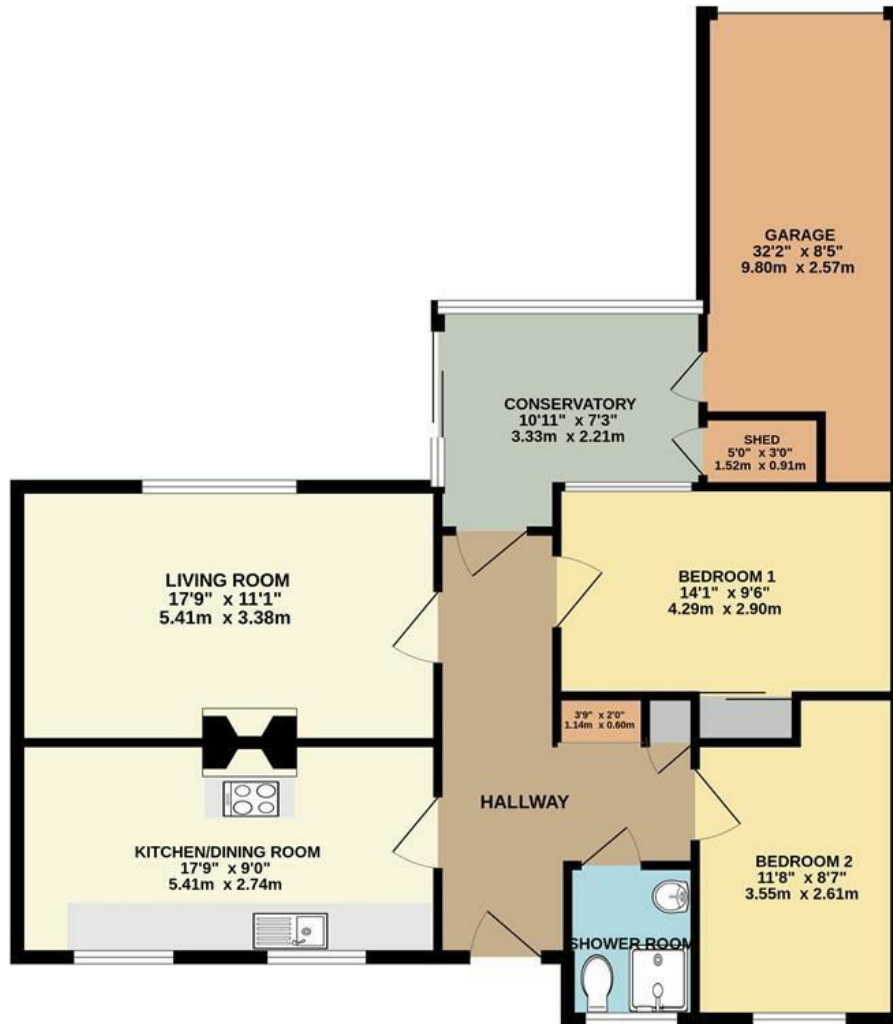
MONEY LAUNDERING REGULATIONS:

Intending purchasers will be asked to produce identification documentation at a later stage and we would ask for your co-operation in order that there will be no delay in agreeing the sale.

REFERRALS:



GROUND FLOOR



2 BEDROOM BUNGALOW

Whilst every attempt has been made to ensure the accuracy of the floorplan contained herein, measurements of doors, windows, rooms and any of omission or mis-statement. This plan should be used as a guide only and is not intended to be used as a contract. The services, fixtures and fittings are as shown.



Energy Efficiency Rating	
Very energy efficient - lower running costs	Current
A (92-100)	
B (81-91)	
C (69-80)	
D (55-68)	
E (49-54)	
F (39-48)	
G (21-38)	

Not energy efficient - higher running costs

England & Wales EU Directive 2002/91/EC

Environmental Impact (CO ₂) Rating	
Very environmentally friendly - lower CO ₂ emissions	Current
A (92-100)	
B (81-91)	
C (69-80)	
D (55-68)	
E (49-54)	
F (39-48)	
G (21-38)	

Not environmentally friendly - higher CO₂ emissions

England & Wales EU Directive 2002/91/EC

