



Cliddesden Road, Fairfields, Basingstoke, RG21 3DU
Guide Price £310,000



Cliddesden Road, Fairfields, Basingstoke, RG21 3DU

NO ONWARD CHAIN - CHEQUERS are pleased to market this well presented semi-detached bungalow set in the sought after area of Fairfields in the town centre. The accommodation includes living room, kitchen/dining room, double bedrooms with access to dressing room and bathroom off. There is a landscaped rear garden enjoying a private aspect. Prompt viewing is recommended.

LIVING ROOM:

13' + bay x 12'6" (3.96m + bay x 3.81m)

Front door, bow window, cloaks cupboard, radiator, inset spotlights, door to bedroom, opening to -

KITCHEN/DINING ROOM:

16'3" x 7'5" (4.95m x 2.26m)

Rear aspect, double glazed French doors to garden, range of eye and base level units, tiled work surfaces, inset 1.5 bowl sink unit with mixer tap, fitted oven and hob with extractor over, plumbing for washing machine, appliance space,, gas fired combi boiler, radiator, inset spotlights.

BEDROOM:

11'7" x 10'5" (3.53m x 3.18m)

Front aspect, bow window, radiator, inset spotlights, access to -

DRESSING AREA:

7'9" x 3'10" (2.36m x 1.17m)

Access to loft space, door to -

BATHROOM:

7'9" x 5'5" (2.36m x 1.65m)

Rear aspect, white suite comprising panel enclosed bath with mixer tap and shower

attachment, low level w.c., pedestal wash hand basin, heated towel rail, inset spotlights, extractor fan.

GARDENS

To the front of the property is a shingled garden with pathway to the front door, side gate to rear. The garden to the rear enjoys a good level of privacy, paved patio and shingled area, outside light and taps, enclosed by brick walling and timber fencing.

COUNCIL TAX:

Band C

MONEY LAUNDERING REGULATIONS:

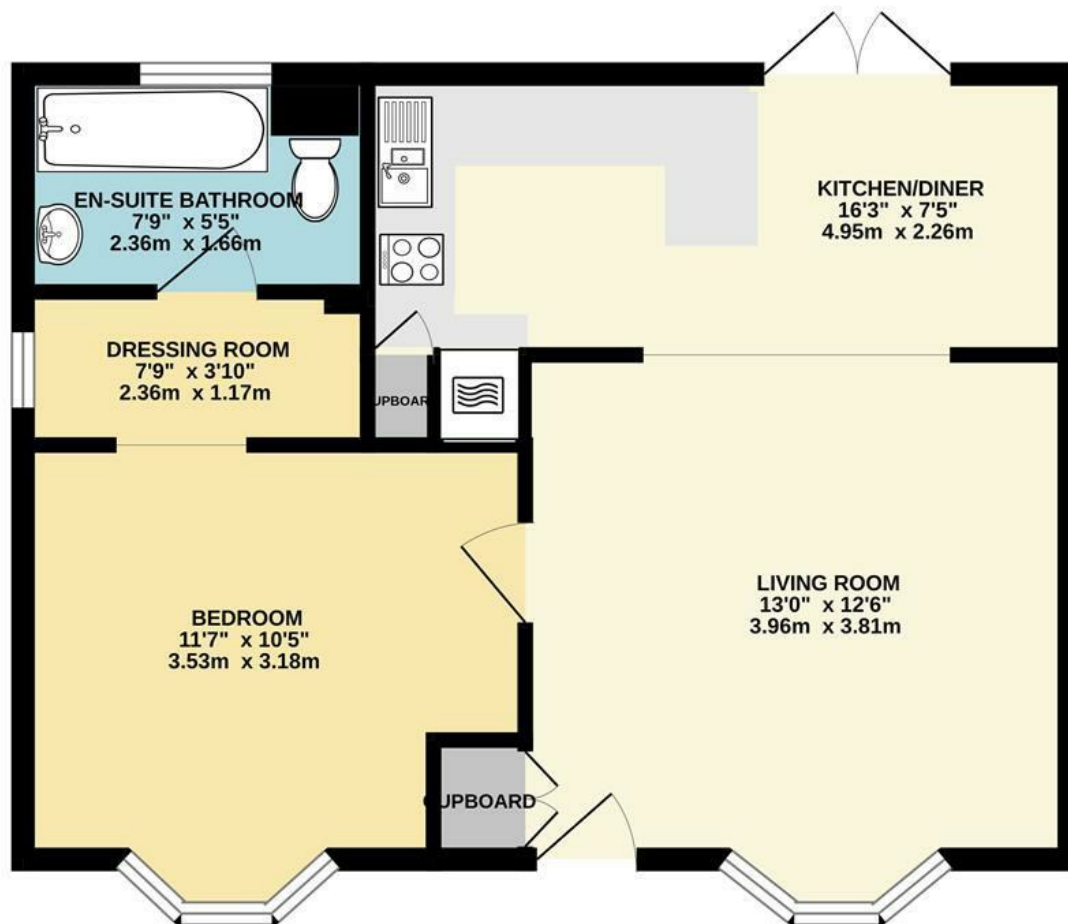
Intending purchasers will be asked to produce identification documentation at a later stage and we would ask for your co-operation in order that there will be no delay in agreeing the sale.

REFERRALS:

Chequers will recommend the services of other businesses and may receive a referral fee in some instances where a buyer or seller uses the services of that company.



GROUND FLOOR



1 BEDROOM SEMI- DETACHED BUNGALOW

Whilst every attempt has been made to ensure the accuracy of the floorplan contained here, measurements of doors, windows, rooms and any other items are approximate and for illustrative purposes only. This plan is for illustrative purposes only and should not be relied upon for any other purpose. The services, systems and appliances shown are as to their operability or efficiency at the time of completion of the plan. Made with Metropix ©2025

