



Thumwood, Chineham, Basingstoke, RG24 8TE
Guide Price £275,000



Thumwood, Chineham, Basingstoke, RG24 8TE

CHEQUERS are pleased to offer this Charles Church Warwick II, set on the favoured Chineham development, within easy access of local amenities. The accommodation includes lounge/dining with door to garden, cloakroom, modern kitchen, two bedrooms and a refitted bathroom. Further benefits include double glazing, gas radiator heating, private enclosed garden and allocated parking.

ENTRANCE HALL:

Part glazed front door, doors to lounge and cloakroom.

CLOAKROOM:

Double glazed window, radiator, low level w.c., corner sink.

LOUNGE/DINING ROOM:

14'8" x 13'11" (4.47m x 4.24m)

Front and side aspect, double glazed window, glazed door to garden, radiator, stairs to first floor, door to -

KITCHEN:

14'7" x 5'6" (4.45m x 1.68m)

Front aspect, double glazed window, range of eye and base level units, roll edged work surfaces, inset single drainer sink unit with mixer tap, fitted oven and hob with extractor over, radiator, appliance space, spotlights.

STAIRCASE GIVES ACCESS TO LANDING:

BEDROOM ONE:

11'3" x 11'1" (3.43m x 3.38m)

Double glazed windows, radiator, built-in double wardrobe.

BEDROOM TWO:

8'4" x 7'10" (2.54m x 2.39m)

Double glazed window, storage cupboard.

BATHROOM:

Suite comprising panel enclosed bath with mixer tap and shower unit over, shower screen, low level w.c., vanity unit with inset sink, tiled surrounds, chrome towel rail, spotlights.

GARDENS:

To the front and side of the property is a lawned garden with patio area, enclosed by panelled fencing. Allocated parking space.

COUNCIL TAX:

Band C

MONEY LAUNDERING REGULATIONS:

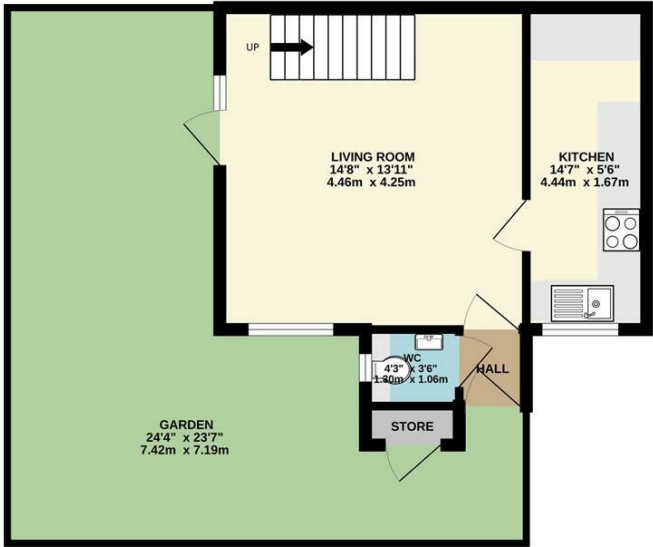
Intending purchasers will be asked to produce identification documentation at a later stage and we would ask for your co-operation in order that there will be no delay in agreeing the sale.

REFERRALS:

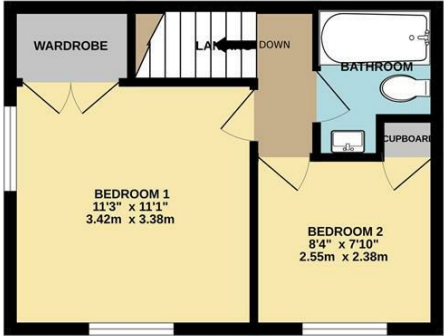
Chequers will recommend the services of other businesses and may receive a referral fee in some instances where a buyer or seller uses the services of that company.



GROUND FLOOR

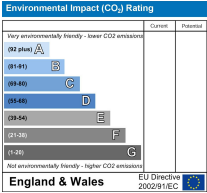
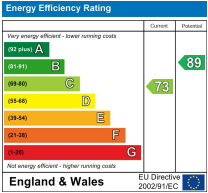


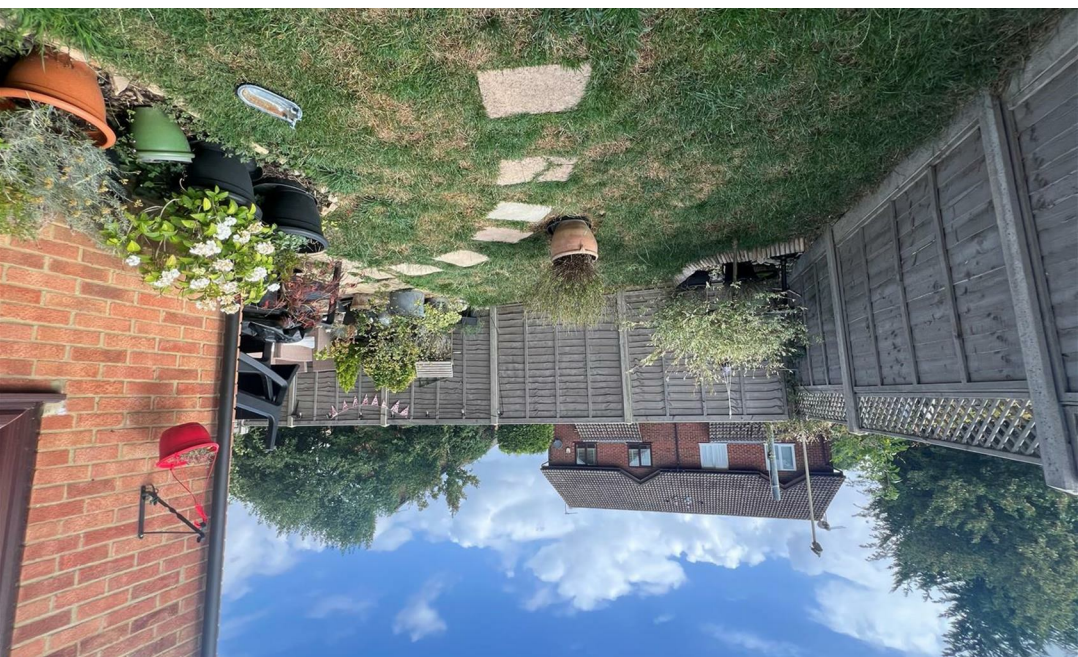
FIRST FLOOR



2 BEDROOM HOUSE

Whilst every attempt has been made to ensure the accuracy of the floorplan contained here, measurements of doors, windows, rooms and any other items are approximate and no responsibility is taken for any error, omission or mis-statement. This plan is for illustrative purposes only and should be used as such by any prospective purchaser. The services, systems and appliances shown have not been tested and no guarantee as to their operability or efficiency can be given.
Made with Metropix ©2025





www.chequersestateagents.co.uk



rightmove.co.uk
The UK's number one property website



T 01256 810018

E sales@chequersestateagents.co.uk

Whilst we endeavour to make our details accurate and reliable if there is any point which is of particular importance to you, please contact the office and we will be pleased to check the information. Do so particularly if contemplating travelling some distance to view the property in accordance with the Property Misdescriptions Act 1991. Chequers Estate Agents advise that no testing (unless otherwise stated) has been carried out on heating, plumbing, gas or electrical appliances (including power points) or any of the main services as we are not qualified to do so. We advise prospective purchasers to make their own enquiries to satisfy any doubts they might have.