



Forty Acres Road, Canterbury, CT2 7HL
Guide price £400,000 Freehold

 3  1  2  D

The Homes Group are delighted to present to the market this CHAIN FREE three bedroom semi-detached family home situated within close proximity of Canterbury City Centre including the University, shopping centres and Canterbury Cathedral plus it is also located within a 5 minute walk of Canterbury West Station.

The Accommodation comprises of two separate reception rooms and kitchen on the ground floor with three bedrooms and a family bathroom on the first floor. To the rear is a 50' garden and to the front is a block paved driveway for two cars.

Entrance Hall

Living Room

12'7 x 12'7 (3.84m x 3.84m)

Dining Room

11' x 10'8 (3.35m x 3.25m)

Kitchen

8' x 7'6 (2.44m x 2.29m)

Landing

Bedroom One

12'9 x 12'9 (3.89m x 3.89m)

Bedroom Two

10'8 x 10'6 (3.25m x 3.20m)

Bedroom Three

8'3 x 7'7 (2.51m x 2.31m)

First Floor Bathroom

Rear Garden

50' (15.24m)

Driveway for Two Cars

Tenure - Freehold

Council Tax - Band C

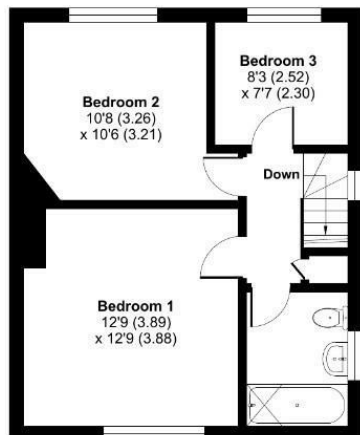




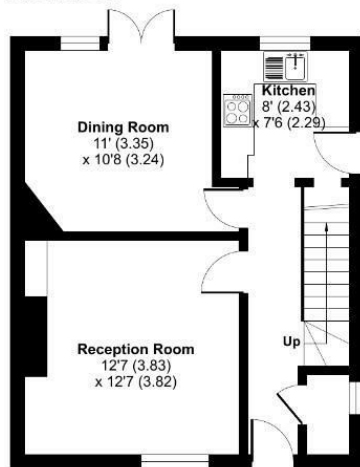
Forty Acres Road, Canterbury, CT2

Approximate Area = 898 sq ft / 83.4 sq m

For identification only - Not to scale



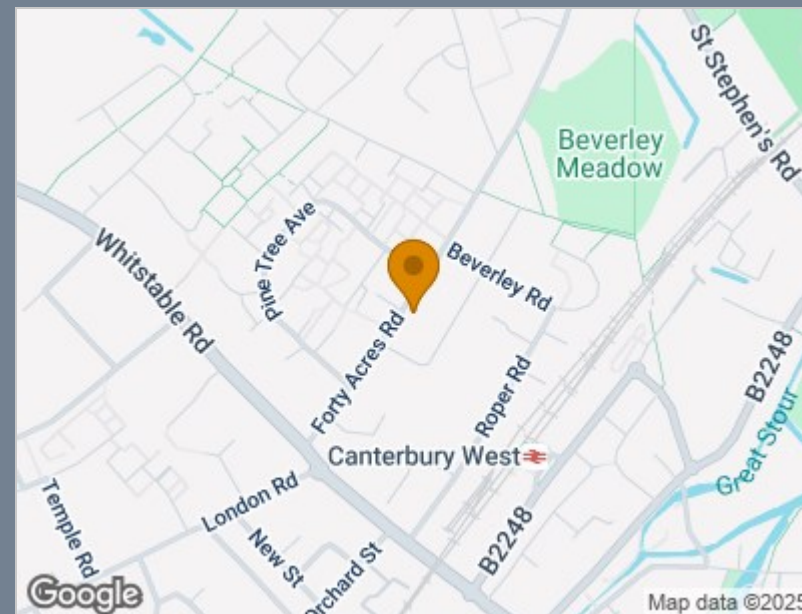
FIRST FLOOR



GROUND FLOOR



Floor plan produced in accordance with RICS Property Measurement 2nd Edition, Incorporating International Property Measurement Standards (IPMS2 Residential). Produced for The Homes Group. REF: 1350767. © richcom 2025.



Energy Efficiency Rating		
	Current	Potential
Very energy efficient - lower running costs		
(92 plus) A		
(81-91) B		85
(69-80) C		
(55-68) D	67	
(39-54) E		
(21-38) F		
(1-20) G		
Not energy efficient - higher running costs		
England & Wales		EU Directive 2002/91/EC

Viewing

Please contact The Homes Group Office on 01322 875000 if you wish to arrange a viewing appointment for this property or require further information.

These particulars, whilst believed to be accurate are set out as a general outline only for guidance and do not constitute any part of an offer or contract. Intending purchasers should not rely on them as statements of representation of fact, but must satisfy themselves by inspection or otherwise as to their accuracy. No person in this firm's employment has the authority to make or give any representation or warranty in respect of the property.

71-75 Shelton Street, London, WC2H 9JQ
T: 01322 875000 | E: info@thehomesgroup.co.uk
thehomesgroup.co.uk