



Fleet Road, Dartford, DA2 6JE
Guide price £450,000 Freehold

4 1 1 D

Guide Price £450,000 - £475,000. The Homes Group are delighted to present to the market this four bedroom family home located on the popular Fleet Estate in Dartford. The property is conveniently located for Fleetdown Primary School, Darent Valley Hospital and the M25 and A2 Motorway networks. The accommodation comprises of an entrance hall, a 30'3 x 10'6 living/dining room and an 11'3 x 6'2 kitchen on the ground floor. On the first floor there are three bedrooms and the family bathroom. On the second floor is the master bedroom and eaves storage cupboards. To the rear is a garden with shed and there is a driveway to the front for two vehicles.

Entrance Hall

Living/Dining Room

30'3 x 10'6 (9.22m x 3.20m)

Kitchen

11'3 x 6'2 (3.43m x 1.88m)

First Floor Landing

Bedroom Two

11'10 x 9'10 (3.61m x 3.00m)

Bedroom Three

11'1 x 9'6 (3.38m x 2.90m)

Bedroom Four

8'1 x 6' (2.46m x 1.83m)

First Floor Bathroom

Second Floor Landing

Bedroom One

13' x 12' (3.96m x 3.66m)

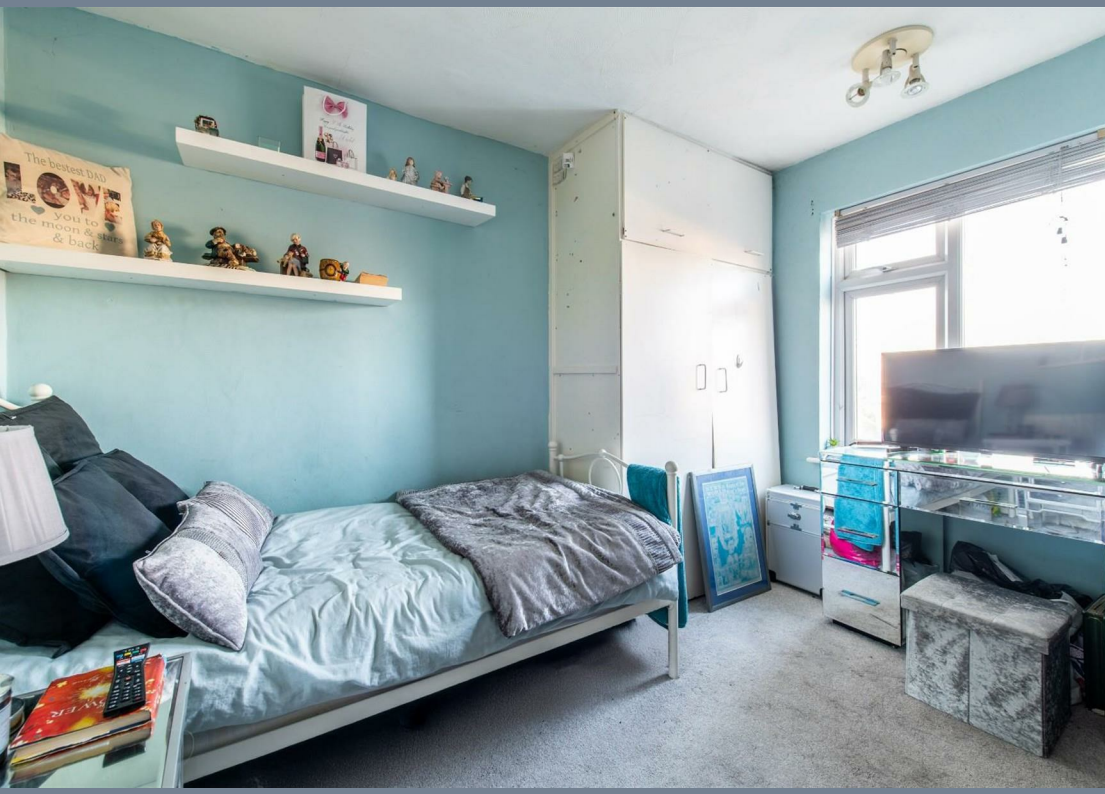
Rear Garden

Driveway for Two Cars

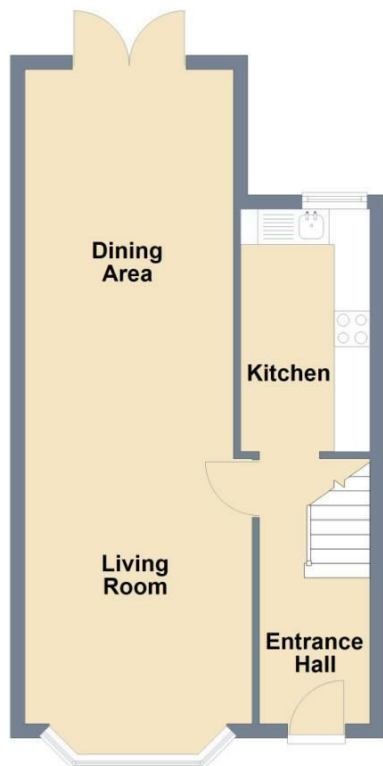
Tenure - Freehold

Council Tax - Band C

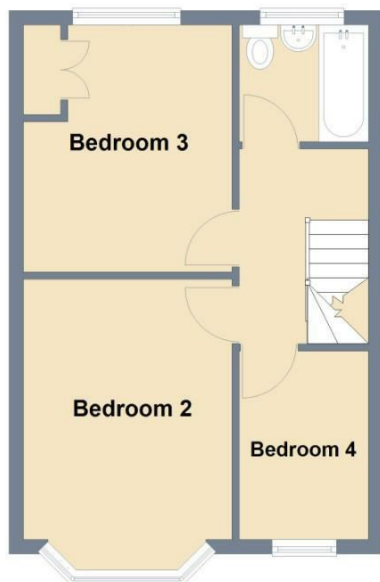




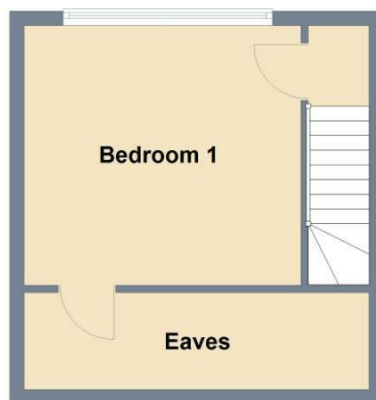
Ground Floor



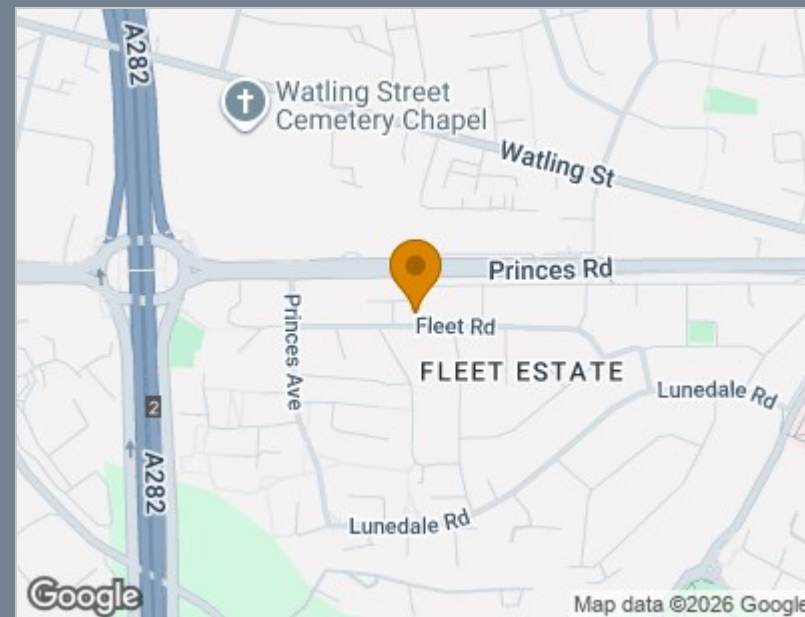
First Floor



Second Floor



Total area: approx. 102.1 sq. metres (1098.8 sq. feet)



Energy Efficiency Rating		
	Current	Potential
Very energy efficient - lower running costs		
(92 plus) A		
(81-91) B		
(69-80) C		79
(55-68) D	62	
(39-54) E		
(21-38) F		
(1-20) G		
Not energy efficient - higher running costs		
England & Wales	EU Directive 2002/91/EC	

Viewing

Please contact The Homes Group Office on 01322 875000 if you wish to arrange a viewing appointment for this property or require further information.

These particulars, whilst believed to be accurate are set out as a general outline only for guidance and do not constitute any part of an offer or contract. Intending purchasers should not rely on them as statements of representation of fact, but must satisfy themselves by inspection or otherwise as to their accuracy. No person in this firm's employment has the authority to make or give any representation or warranty in respect of the property.