



Gerda Road, New Eltham, SE9 3SW  
Guide Price £280,000 Leasehold



The Homes Group are proud to present this beautifully presented conversion flat that offers a delightful blend of period charm and modern living. The property features a spacious reception room with fitted shutters, a well-appointed bedroom, and a stylish bathroom, making it an ideal choice for individuals or couples seeking a comfortable home.

Built around 1910, this flat retains many of its original features, providing a unique character that is often sought after in period properties. The conversion has been thoughtfully executed, ensuring that the essence of the building is preserved while incorporating contemporary finishes that cater to today's lifestyle.

One of the standout features of this property is its convenient location. Just a short walk from New Eltham station (Zone 4), residents will benefit from excellent transport links, making commuting to central London and beyond a breeze. The surrounding area boasts a variety of local amenities, including shops, cafes, and parks, ensuring that everything you need is within easy reach.

Tenure: Leasehold Lease Term: 125 years from 29th Jan 2015. Ground Rent: £150pa. Buildings Insurance: £259.33pa. No service charge or management company. Maintenance costs split between two flats within the building.

### Communal Entrance Hall

#### Entrance

#### Split Level Landing

#### Kitchen/Diner

11'6 x 10'5 (3.51m x 3.18m)

#### Bathroom

7'5 x 4'10 (2.26m x 1.47m)

#### Bedroom

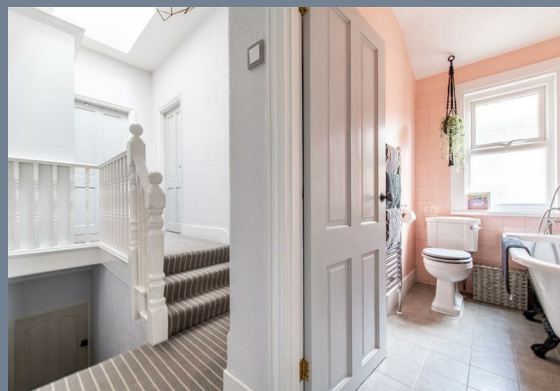
11'5 x 9'10 (3.48m x 3.00m)

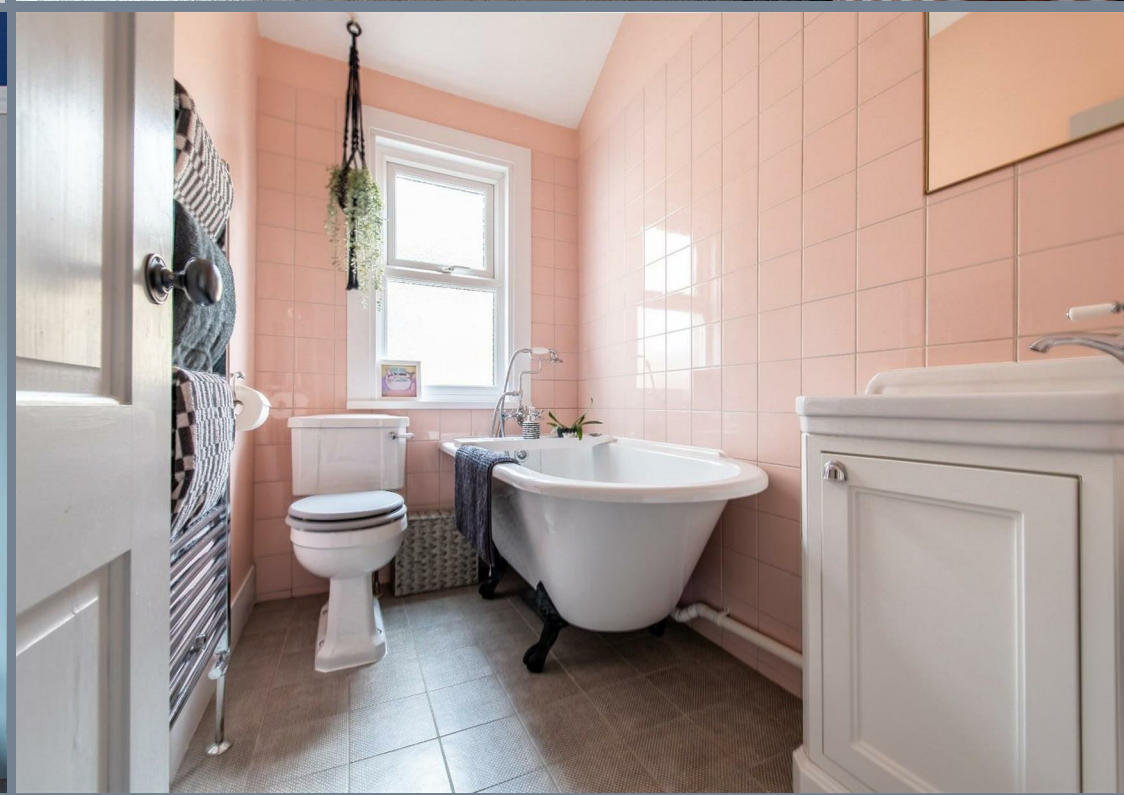
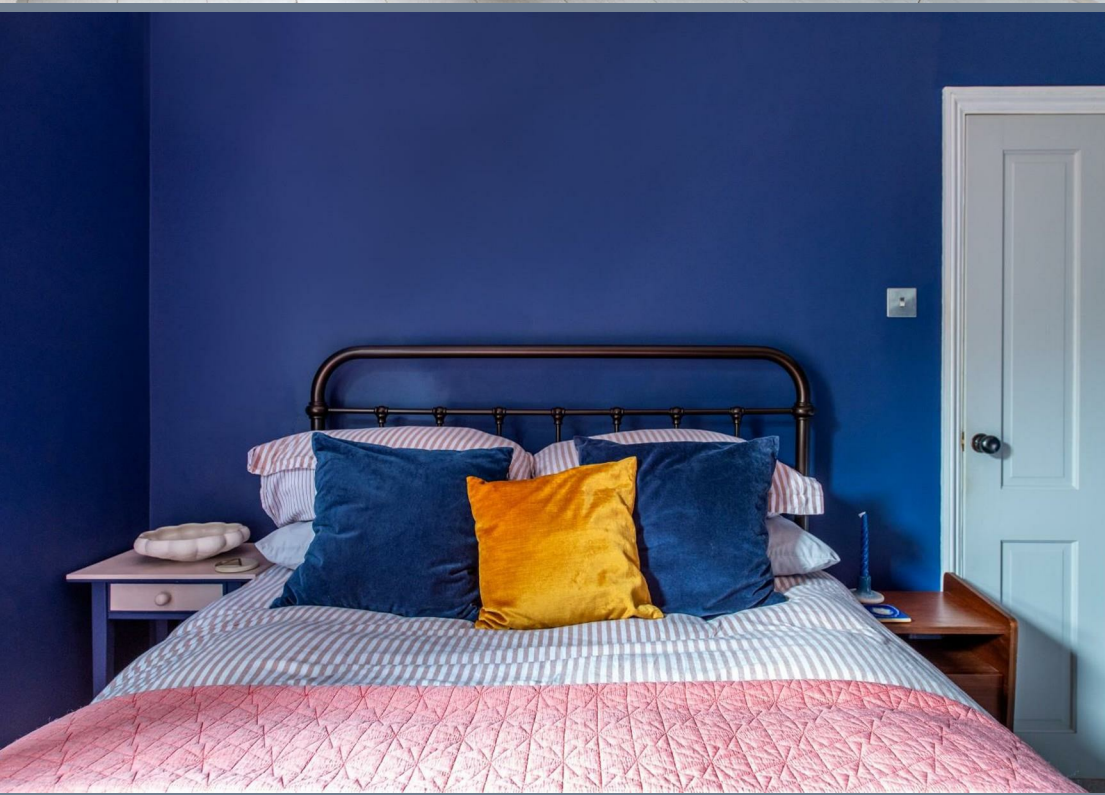
#### Living Room

15'8 x 11'8 - 14'6 into bay (4.78m x 3.56m - 4.42m into bay)

**Tenure: Leasehold**

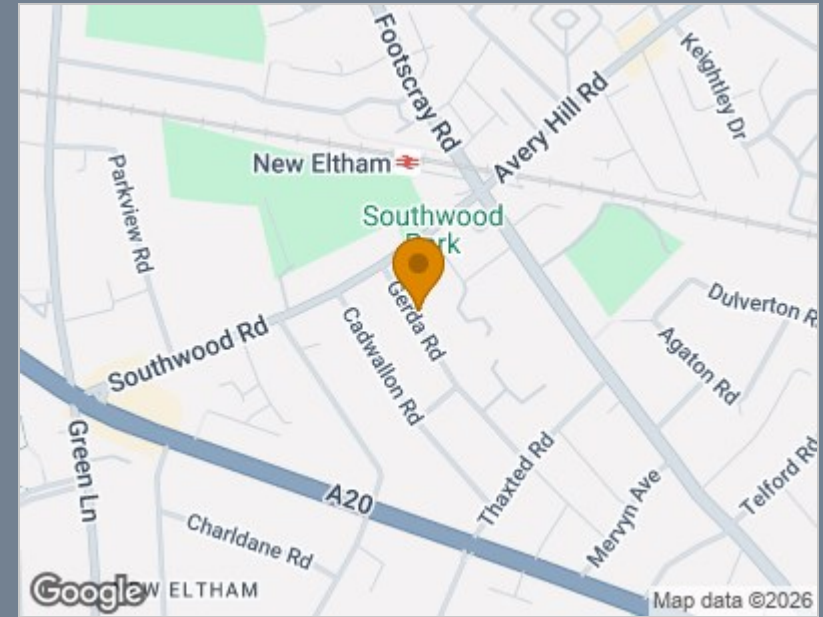
**Council Tax: Band C**







Total area: approx. 57.8 sq. metres (622.1 sq. feet)



Energy Efficiency Rating		Current	Potential
Very energy efficient - lower running costs			
(92 plus) A			
(81-91) B			
(69-80) C		69	78
(55-68) D			
(39-54) E			
(21-38) F			
(1-20) G			
Not energy efficient - higher running costs			
<b>England &amp; Wales</b>		EU Directive 2002/91/EC	

## Viewing

Please contact The Homes Group Office on 01322 875000 if you wish to arrange a viewing appointment for this property or require further information.

These particulars, whilst believed to be accurate are set out as a general outline only for guidance and do not constitute any part of an offer or contract. Intending purchasers should not rely on them as statements of representation of fact, but must satisfy themselves by inspection or otherwise as to their accuracy. No person in this firm's employment has the authority to make or give any representation or warranty in respect of the property.