



Whitehead Close, Wilmington, DA2 7PR

Guide price £525,000 Freehold

 4
  1
  2
  C

The Homes Group are delighted to present to the market this four bedroom extended semi-detached house offered to the market with no chain. Located within a quiet road a short walk from a variety of sought after education facilities such as Wilmington Grammar Schools, Wilmington Academy & North Kent College. The home offers versatile accommodation with four good-sized bedrooms, three receptions, ground floor cloakroom and family sized bathroom. Externally is the deceptively sized rear garden, garage (for storage/bikes) and off road parking.

Entrance Hall

Cloakroom

Living Room

20'10" x 12'11" narrowing to 9'5" (6.35m x 3.94m narrowing to 2.87m)

Dining Room

11' x 8'11" (3.35m x 2.72m)

Third Reception Room

13'11" x 7'5" (4.24m x 2.26m)

Kitchen

9'5" x 8'10" (2.87m x 2.69m)

Landing

Bedroom One with Dresser Area

15'6" to wardrobes x 10'11" at widest (4.72m to wardrobes x 3.33m at widest)

Bedroom Two

11'10" x 9'9" (3.61m x 2.97m)

Bedroom Three

11'8" x 7'6" (3.56m x 2.29m)

Bedroom Four

9'6" x 9" (2.90m x 2.74m)

Bathroom

6'10" x 5'5" (2.08m x 1.65m)

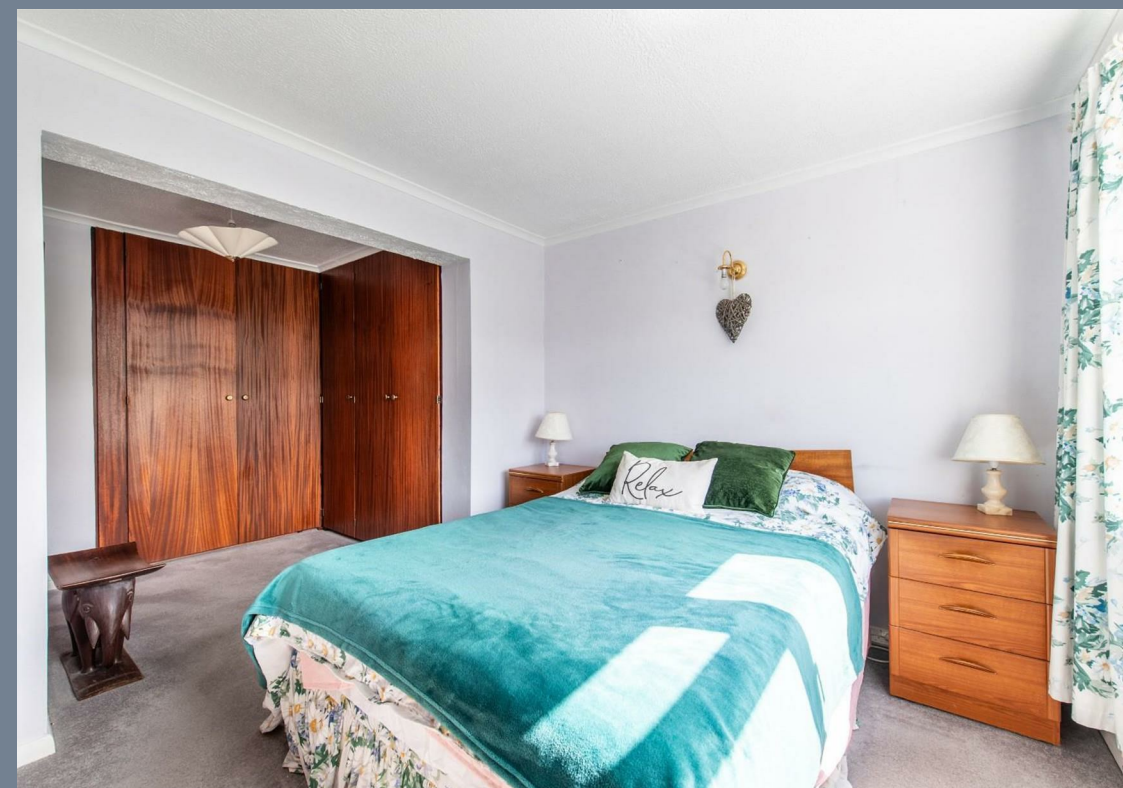
Garden

Garage (for storage)

Parking

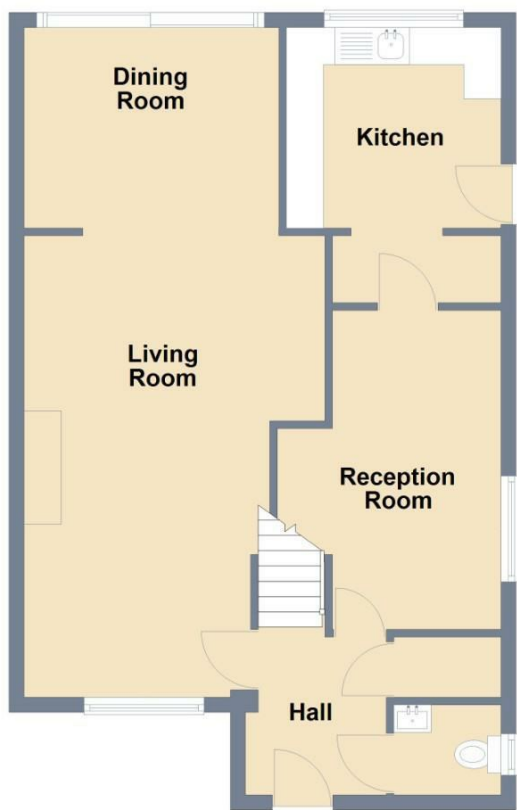
Tenure: Freehold

Council Tax: Band E

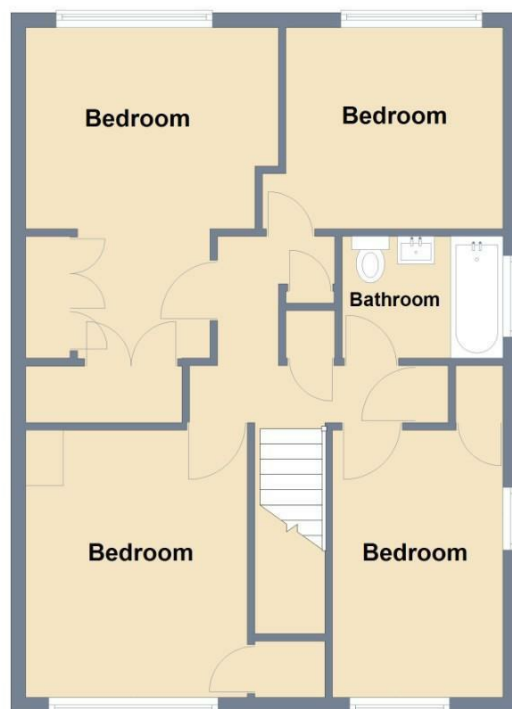




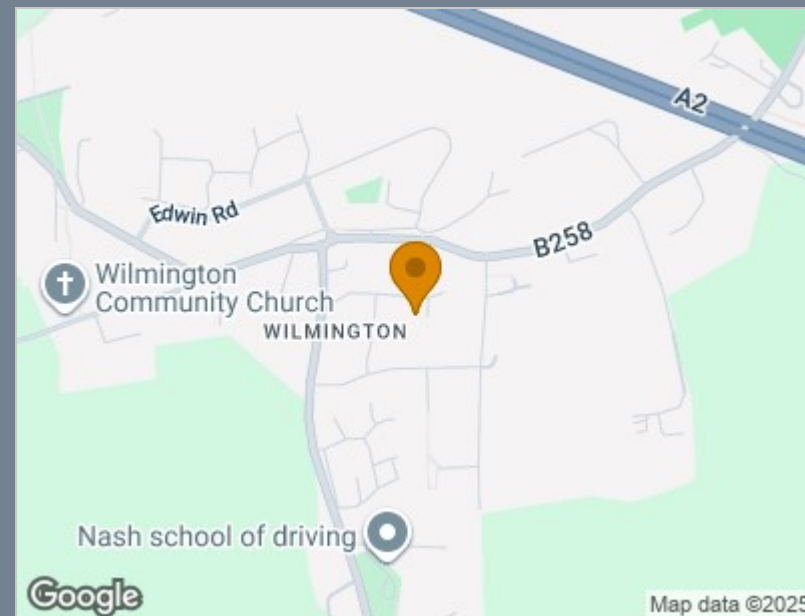
Ground Floor



First Floor



Total area: approx. 119.7 sq. metres (1288.6 sq. feet)



Energy Efficiency Rating		
	Current	Potential
Very energy efficient - lower running costs		
(92 plus) A		
(81-91) B		
(69-80) C	69	78
(55-68) D		
(39-54) E		
(21-38) F		
(1-20) G		
Not energy efficient - higher running costs		
England & Wales	EU Directive 2002/91/EC	

Viewing

Please contact The Homes Group Office on 01322 875000 if you wish to arrange a viewing appointment for this property or require further information.

These particulars, whilst believed to be accurate are set out as a general outline only for guidance and do not constitute any part of an offer or contract. Intending purchasers should not rely on them as statements of representation of fact, but must satisfy themselves by inspection or otherwise as to their accuracy. No person in this firm's employment has the authority to make or give any representation or warranty in respect of the property.