



Victoria Street, Maidstone, ME16 8JA  
Guide price £270,000 Freehold

 3  1  2  D



The Homes Group are delighted to present to the market this two/three bedroom Victorian Style terraced house offered with no forward chain that is located within close proximity of Maidstone town centre and walking distance of Maidstone West Train Station.

The accommodation comprises of an entrance hall, living room, separate dining room with access to a basement room, a kitchen and ground floor bathroom. On the first floor there are the bedrooms all with Victorian Style cast iron fireplaces.

To the rear is a 65' garden which could be opened to the rear access road to provide off road parking.

#### **Entrance Hall**

#### **Living Room**

11'4 x 8'2 (3.45m x 2.49m)

#### **Dining Room**

11' x 10' (3.35m x 3.05m)

#### **Kitchen**

9' x 6'8 (2.74m x 2.03m)

#### **Lobby**

#### **Ground Floor Bathroom**

7'3 x 6' (2.21m x 1.83m)

#### **Basement Room**

11' x 11' (3.35m x 3.35m)

#### **Landing**

#### **Bedroom One**

11'3 x 11'1 (3.43m x 3.38m)

#### **Bedroom Two**

11' x 10' (3.35m x 3.05m)

#### **Bedroom Three**

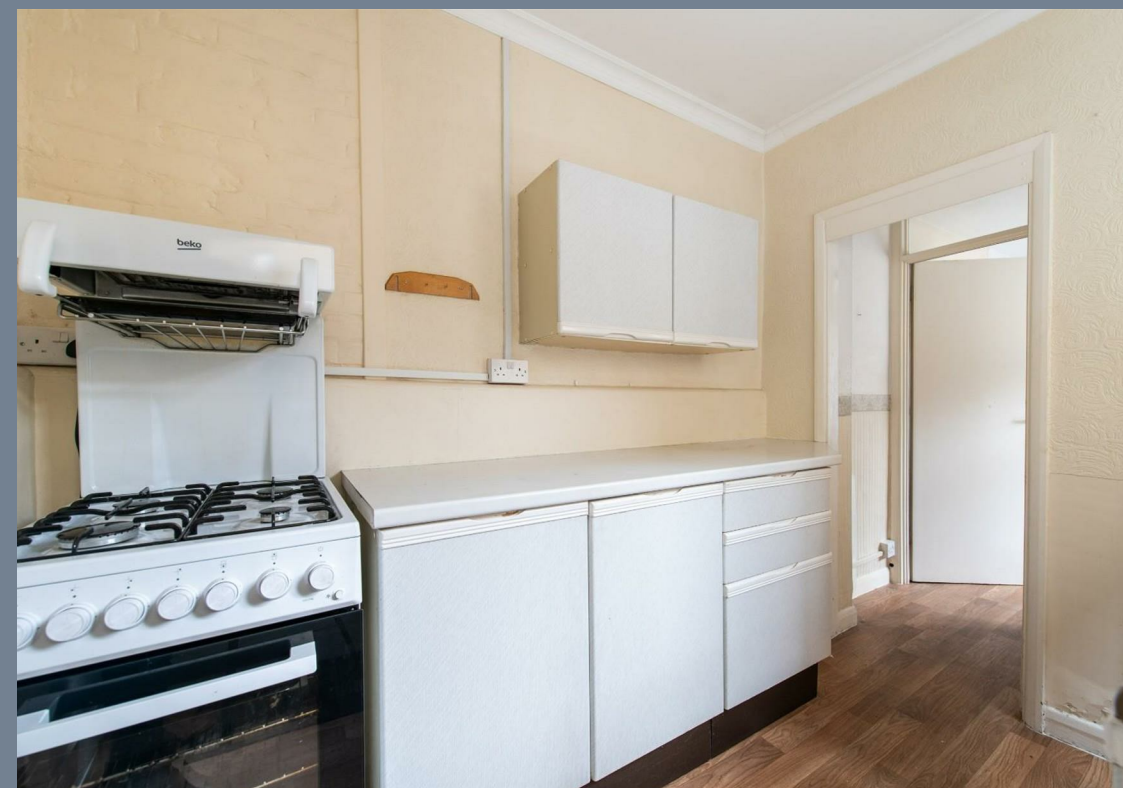
9' x 6'8 (2.74m x 2.03m)

#### **Rear Garden**

65' (19.81m)

#### **Tenure - Freehold**

#### **Council Tax - Band C**











Energy Efficiency Rating		
	Current	Potential
Very energy efficient - lower running costs		
(92 plus) A		87
(81-91) B		
(69-80) C	67	
(55-68) D		
(39-54) E		
(21-38) F		
(1-20) G		
Not energy efficient - higher running costs		
England & Wales	EU Directive 2002/91/EC	

**Viewing**  
Please contact The Homes Group Office on 01322 875000 if you wish to arrange a viewing appointment for this property or require further information.

These particulars, whilst believed to be accurate are set out as a general outline only for guidance and do not constitute any part of an offer or contract. Intending purchasers should not rely on them as statements of representation of fact, but must satisfy themselves by inspection or otherwise as to their accuracy. No person in this firms employment has the authority to make or give any representation or warranty in respect of the property.