



THE
HOMES
GROUP



Pennine Way, Bexleyheath, DA7 6SR
Guide price £325,000 Freehold



The Homes Group are delighted to present to the market this two double bedroom semi-detached home offered with no forward chain that is conveniently located within a mile of Barnehurst and Slade Green Stations.

The accommodation comprises of an entrance hall, a 14'5 x 13'1 living room, a 16'4 x 11'5 kitchen/diner on the ground floor. There are two double bedrooms and a family bathroom on the first floor plus the 16'4 x 9'6 loft area has been converted into a study/music room and benefits from three skylights and storage in the eaves.

There is a garden to the rear with two storage sheds and side pedestrian access.

Entrance Hall

Living Room

14'5 into bay x 13'1 (4.39m into bay x 3.99m)

Kitchen/Diner

16'4 x 11'5 (4.98m x 3.48m)

Landing

Bedroom One

11'2 x 11'2 to wardrobes (3.40m x 3.40m to wardrobes)

Bedroom Two

11'6 x 9'2 to cupboards (3.51m x 2.79m to cupboards)

Bathroom

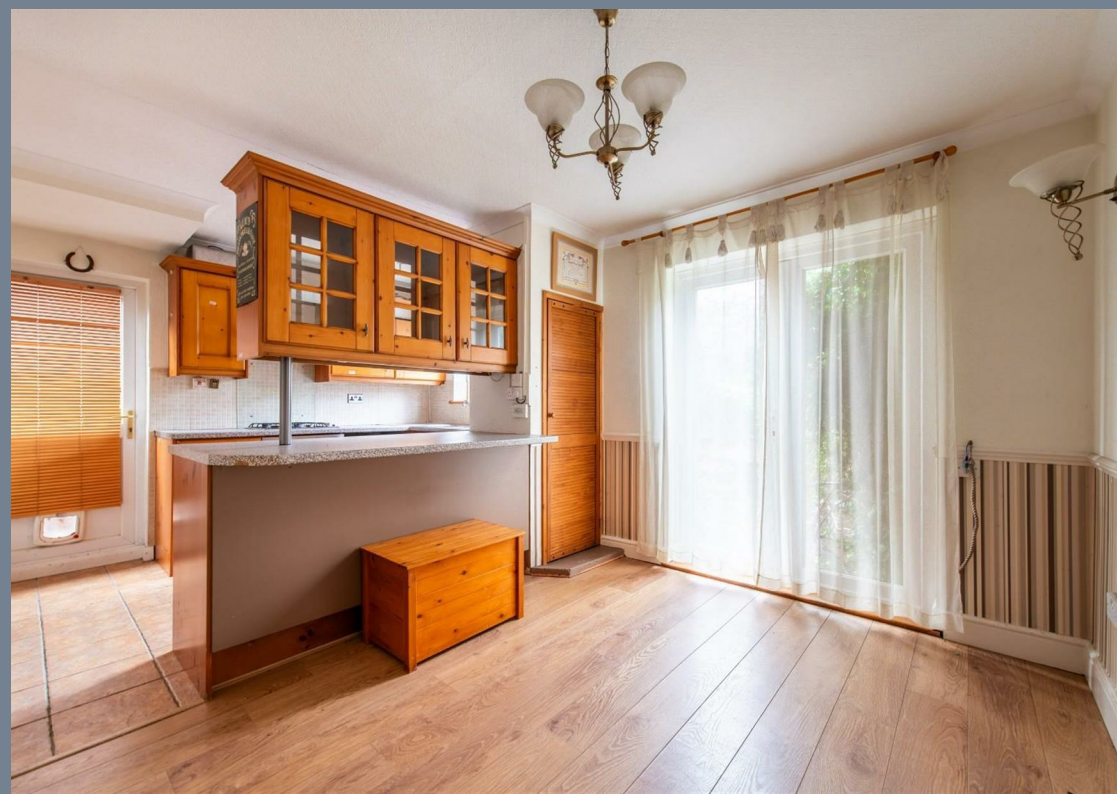
Loft Room

16'4 x 9'6 (4.98m x 2.90m)

Rear Garden

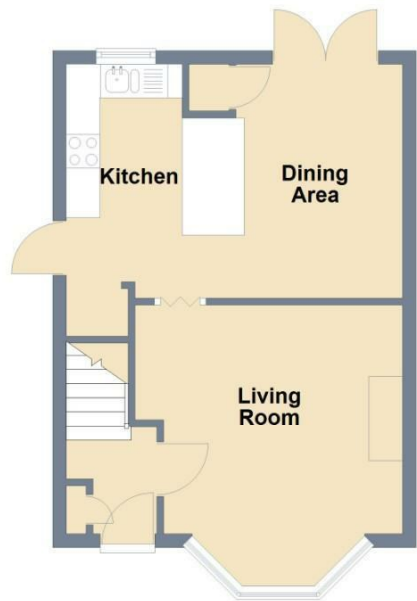
Tenure - Freehold

Council Tax - Band C





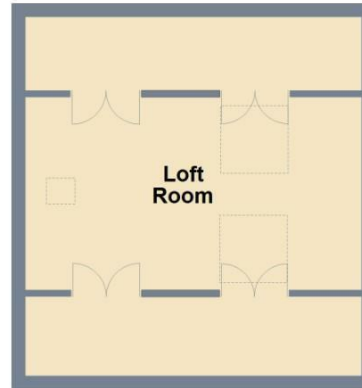
Ground Floor



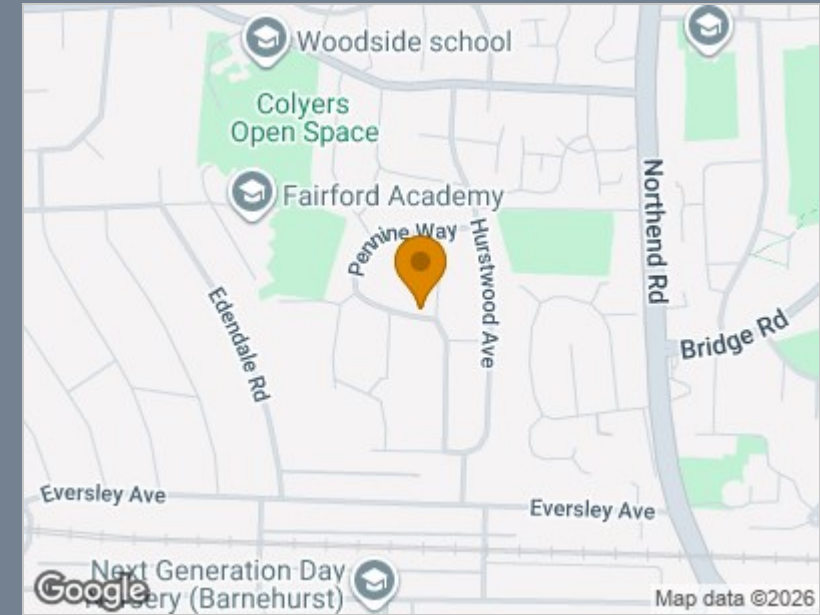
First Floor



Second Floor



Total area: approx. 70.2 sq. metres (755.4 sq. feet)



Energy Efficiency Rating		
	Current	Potential
<i>Very energy efficient - lower running costs</i>		
(92 plus) A		
(81-91) B		
(69-80) C		74
(55-68) D	66	
(39-54) E		
(21-38) F		
(1-20) G		
<i>Not energy efficient - higher running costs</i>		
England & Wales	EU Directive 2002/91/EC	

Viewing

Please contact The Homes Group Office on 01322 875000 if you wish to arrange a viewing appointment for this property or require further information.

These particulars, whilst believed to be accurate are set out as a general outline only for guidance and do not constitute any part of an offer or contract. Intending purchasers should not rely on them as statements of representation of fact, but must satisfy themselves by inspection or otherwise as to their accuracy. No person in this firm's employment has the authority to make or give any representation or warranty in respect of the property.