



Empire Walk, Greenhithe, DA9 9FU
Guide price £250,000 Leasehold

 2
  2
  1
  C

Guide Price £250,000-£260,000 Overlooking tree lined communal gardens in a corner of Ingress Park is this beautifully presented two double bedroom first floor flat with balcony, en-suite shower room and an allocated parking space.

The accommodation comprises of an entrance hall with storage cupboards, a 22' x 12' living room with Kitchen area and a balcony overlooking the communal gardens to the rear, a 16'2 x 9'10 main bedroom with en-suite shower room, a 9'2 x 8'10 second bedroom with fitted wardrobes plus a family bathroom.

The property also benefits from an allocated parking space in the gated car park at the front of the property.

Tenure Leasehold - Lease Term: 125 years from 1st March 2003 - Ground Rent: £200 per annum - Service Charge: We have been advised by the seller that the current service charge is £3078 per annum. which includes a grounds maintenance charge of £31 per month. The grounds upkeep charge is paid monthly.

Communal Entrance Hall

Entrance Hall

Living Room / Kitchen Area

22' x 12'2 (6.71m x 3.71m)

Balcony

8'4 x 3'2 (2.54m x 0.97m)

Bedroom One

16'2 x 9'10 (4.93m x 3.00m)

En-Suite Shower Room

6'6 x 5'7 (1.98m x 1.70m)

Bedroom Two

9'2 to wardrobes x 8'10 (2.79m to wardrobes x 2.69m)

Bathroom

6'9 x 5'5 (2.06m x 1.65m)

Allocated Parking Space

Tenure - Leasehold

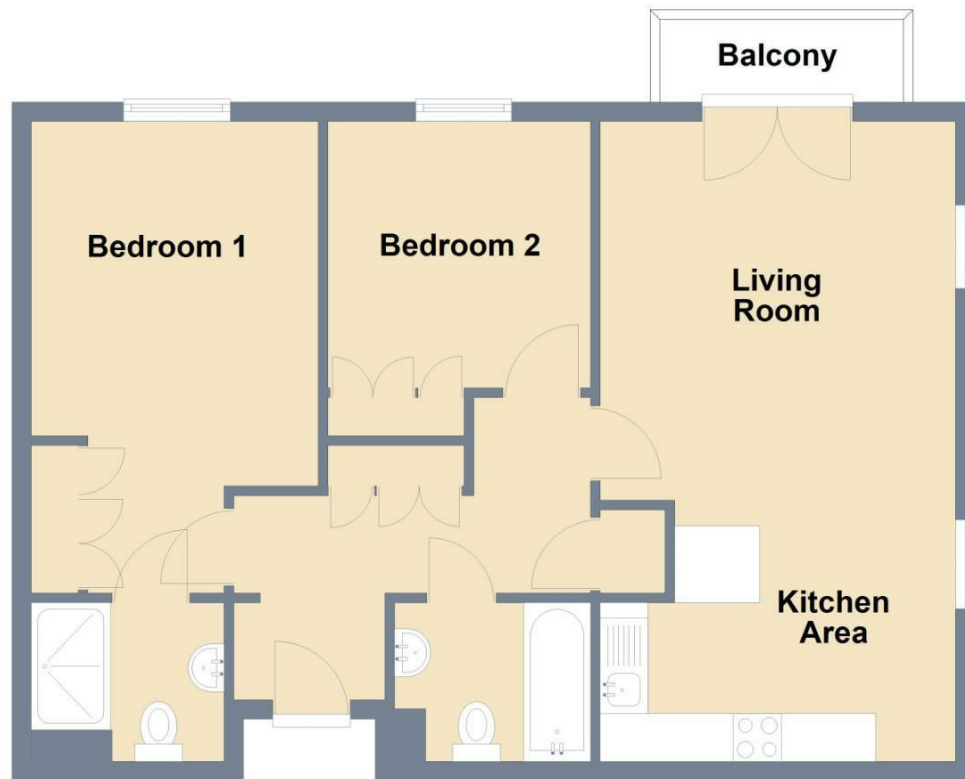
Council Tax - Band D



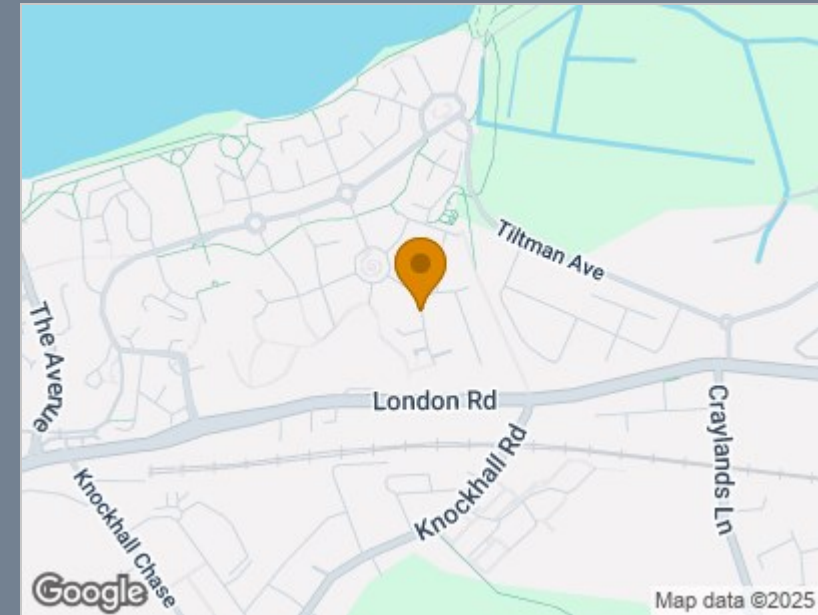


Ground Floor

Approx. 63.5 sq. metres (683.1 sq. feet)



Total area: approx. 63.5 sq. metres (683.1 sq. feet)



Energy Efficiency Rating		
	Current	Potential
Very energy efficient - lower running costs		
(92 plus) A		
(81-91) B		
(69-80) C	80	80
(55-68) D		
(39-54) E		
(21-38) F		
(1-20) G		
Not energy efficient - higher running costs		
England & Wales	EU Directive 2002/91/EC	

Viewing

Please contact The Homes Group Office on 01322 875000 if you wish to arrange a viewing appointment for this property or require further information.

These particulars, whilst believed to be accurate are set out as a general outline only for guidance and do not constitute any part of an offer or contract. Intending purchasers should not rely on them as statements of representation of fact, but must satisfy themselves by inspection or otherwise as to their accuracy. No person in this firm's employment has the authority to make or give any representation or warranty in respect of the property.