



Bullivant Close, Greenhithe, DA9 9PB
Guide price £550,000 Freehold

The Homes Group are delighted to offer to the market this beautifully presented and extended four bedroom detached house located in a quiet residential close on the popular Worcester Park development near to the station in Greenhithe.

The accommodation comprises of a 15'5 x 13'6 living room with double doors opening into the 10'6 x 8'9 dining room, an 11'5 x 9'3 conservatory, an 11'4 x 8' kitchen which has access to the 16' x 8'10 integral garage, a separate utility room and a ground floor cloakroom.

On the first floor are the four bedrooms comprising of the 18'3 x 8' master bedroom which has built in wardrobes and an en-suite shower room, two further double bedrooms and a single bedroom. There is also a family bathroom. Bedrooms one & two benefit from air conditioning.

To the rear is a 40' south facing garden which has a summerhouse and two patio areas and an area of lawn.

Entrance Hall

Ground Floor Cloakroom

Living Room

15'5 x 13'5 (4.70m x 4.09m)

Dining Room

10'6 x 8'9 (3.20m x 2.67m)

Conservatory

11'5 x 9'3 (3.48m x 2.82m)

Kitchen

11'4 x 8' (3.45m x 2.44m)

Utility Room

5'6 x 5'1 (1.68m x 1.55m)

Landing

10'10 x 6'8 (3.30m x 2.03m)

Main Bedroom

18'3 x 8' (5.56m x 2.44m)

En-Suite Shower Room

Bedroom Two

11'7 x 10' (3.53m x 3.05m)

Bedroom Three

10'10 x 9'6 (3.30m x 2.90m)

Bedroom Four

7'1 x 6'11 (2.16m x 2.11m)

Bathroom

6'7 x 6'5 (2.01m x 1.96m)

Rear Garden

40' (12.19m)

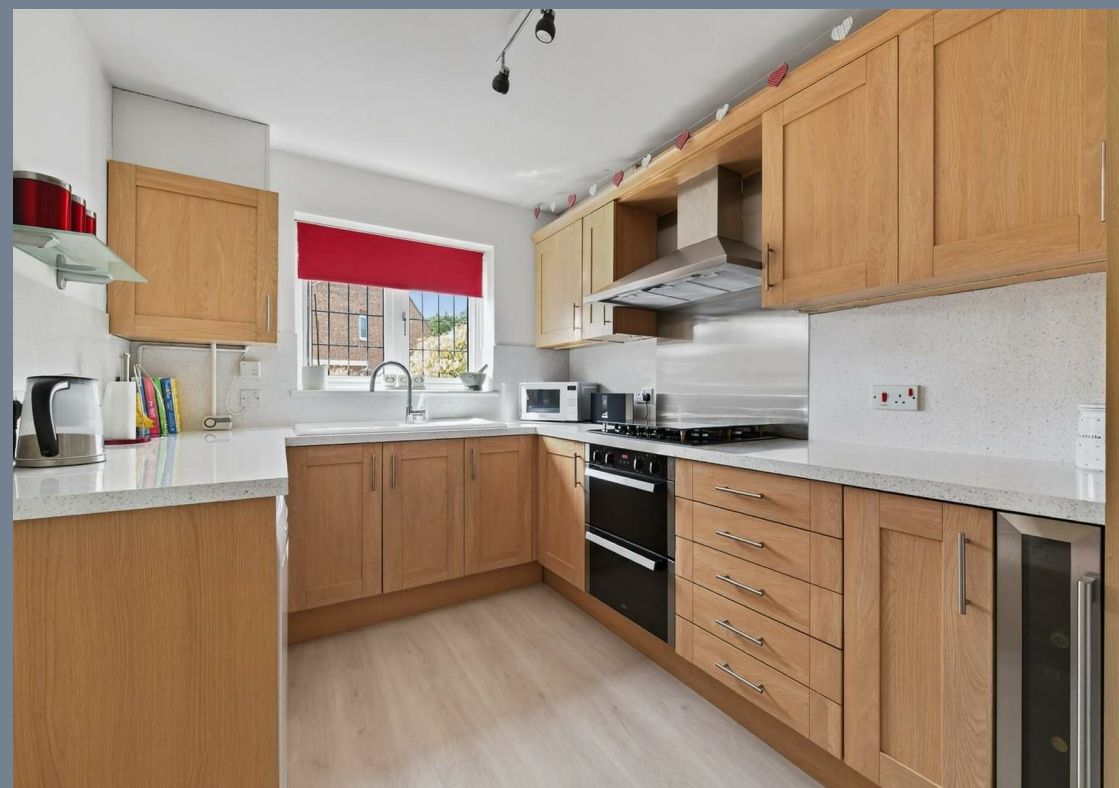
Integral Garage

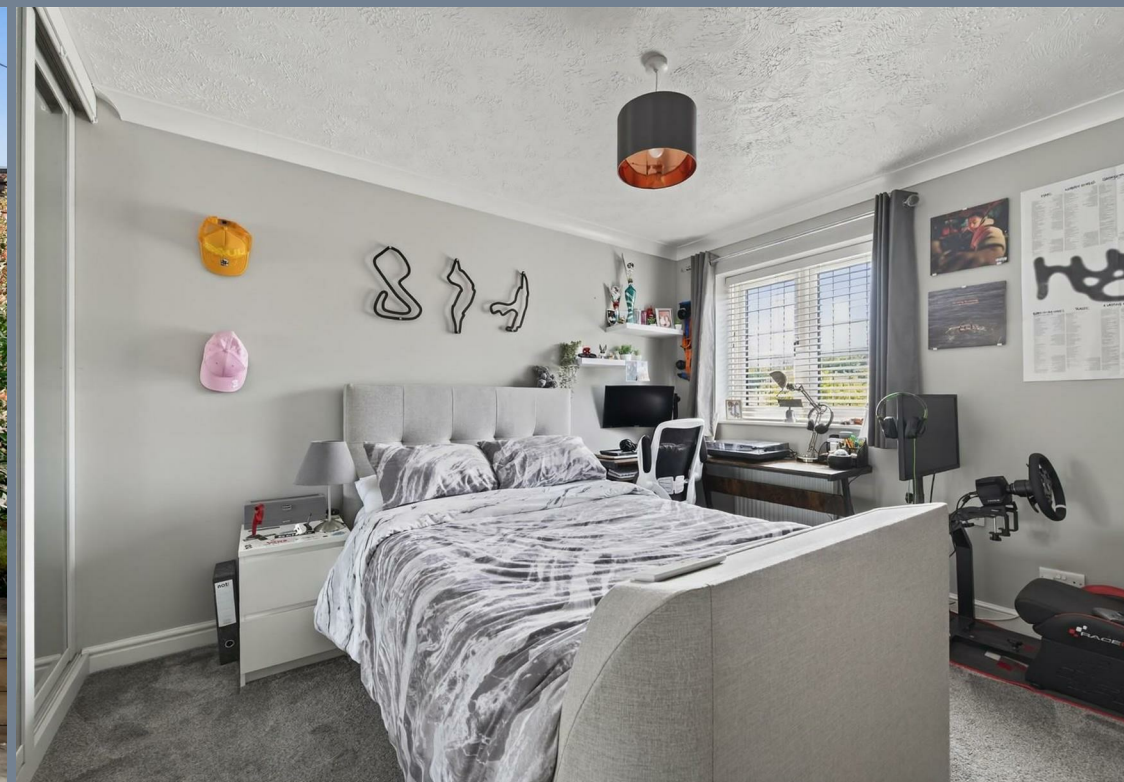
16' x 8'10 (4.88m x 2.69m)

Driveway for Two Cars

Tenure - Freehold

Council Tax - Band E





Ground Floor

Approx. 58.9 sq. metres (633.6 sq. feet)



First Floor

Approx. 58.0 sq. metres (624.3 sq. feet)



Total area: approx. 116.9 sq. metres (1257.9 sq. feet)



Energy Efficiency Rating		
	Current	Potential
Very energy efficient - lower running costs		
(92 plus) A		
(81-91) B		
(69-80) C	71	77
(55-68) D		
(39-54) E		
(21-38) F		
(1-20) G		
Not energy efficient - higher running costs		
England & Wales	EU Directive 2002/91/EC	

Viewing

Please contact The Homes Group Office on 01322 875000 if you wish to arrange a viewing appointment for this property or require further information.

These particulars, whilst believed to be accurate are set out as a general outline only for guidance and do not constitute any part of an offer or contract. Intending purchasers should not rely on them as statements of representation of fact, but must satisfy themselves by inspection or otherwise as to their accuracy. No person in this firm's employment has the authority to make or give any representation or warranty in respect of the property.