



THE
HOMES
GROUP



Kirby Road, Dartford, DA2 6HD
Asking price £350,000 Freehold



The Homes Group are delighted to offer to the market this two double bedroom end of terrace house which benefits from a 50' rear garden, a driveway for two cars to the front and the property is offered with no forward chain.

The accommodation comprises of an entrance hall, a 21' x 9'10 living room and a 9'10 x 8'10 kitchen. On the first floor there is a family bathroom and the two double bedrooms measuring 13'5 x 9'8 and 11' x 10'4.

The home is located within easy reach of a variety of education facilities, such as Stone Lodge (secondary) School & The Brent Primary School and ideal for NHS staff at Darent Valley Hospital.

Enclosed Porch

Entrance Hall

Living Room

21' x 9'10 (6.40m x 3.00m)

Kitchen

9'10 x 8'10 (3.00m x 2.69m)

Landing

Bedroom One

13'5 x 9'8 (4.09m x 2.95m)

Bedroom Two

11' x 10'4 (3.35m x 3.15m)

First Floor Bathroom

Rear Garden

50' (15.24m)

Two Car Driveway

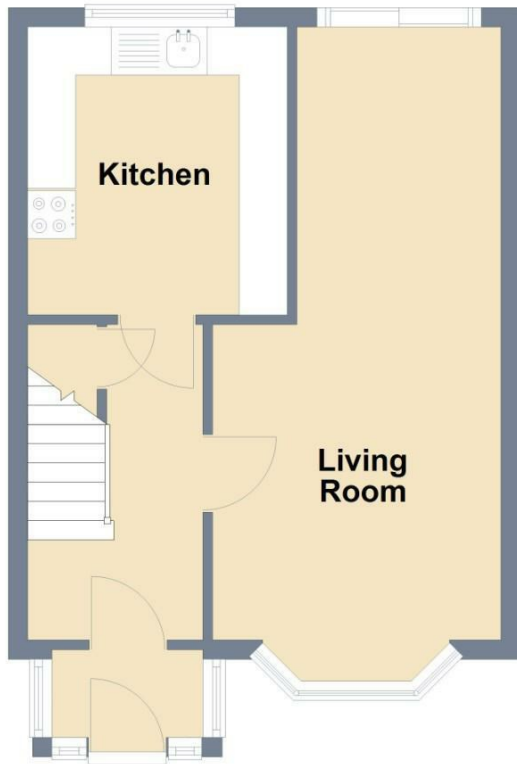
Tenure - Freehold

Council Tax - Band C





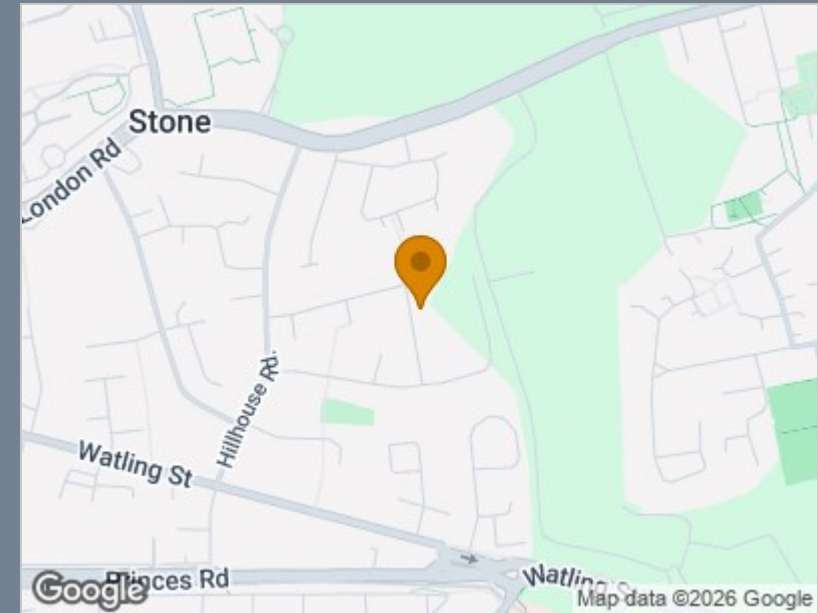
Ground Floor



First Floor



Total area: approx. 64.7 sq. metres (696.9 sq. feet)



Energy Efficiency Rating		Current	Potential
<i>Very energy efficient - lower running costs</i>			
(92 plus) A			
(81-91) B			85
(69-80) C			
(55-68) D		67	
(39-54) E			
(21-38) F			
(1-20) G			
<i>Not energy efficient - higher running costs</i>			
England & Wales	EU Directive 2002/91/EC		

Viewing

Please contact The Homes Group Office on 01322 875000 if you wish to arrange a viewing appointment for this property or require further information.

These particulars, whilst believed to be accurate are set out as a general outline only for guidance and do not constitute any part of an offer or contract. Intending purchasers should not rely on them as statements of representation of fact, but must satisfy themselves by inspection or otherwise as to their accuracy. No person in this firm's employment has the authority to make or give any representation or warranty in respect of the property.