



THE
HOMES
GROUP



Evans Close, Greenhithe, DA9 9PG

Guide price £360,000 Freehold



The Homes Group are delighted to present this recently refurbished two bedroom semi-detached house on the popular Worcester Park development in Greenhithe. Ideally located for Greenhithe Station, Asda supermarket and Bluewater. The accommodation comprises of a 19'10 x 11'8 living Room and an 11'7 x 7'5 kitchen on the ground floor with two double bedrooms and bathroom on the first floor. To the rear is a 35' x 25' West facing garden and there is a driveway to the side for two vehicles.

Entrance Hall

Living Room

19'10 x 11'8 (6.05m x 3.56m)

Kitchen

11'7 x 7'5 (3.53m x 2.26m)

Landing

Bedroom One

11'8 x 10'7 (3.56m x 3.23m)

Bedroom Two

11'7 x 7'5 (3.53m x 2.26m)

Bathroom

Rear Garden

35' (10.67m)

Driveway

Tenure - Freehold

Council Tax - Band D

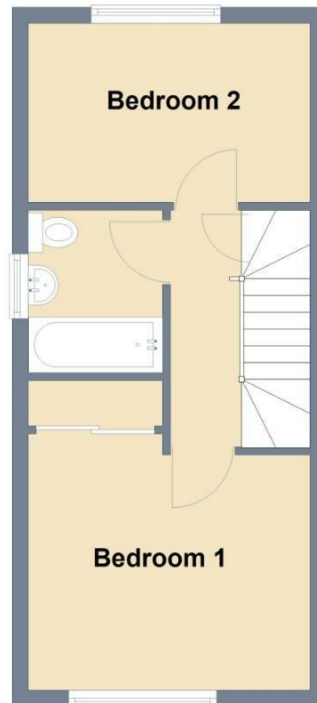




Ground Floor
Approx. 30.2 sq. metres (325.4 sq. feet)



First Floor
Approx. 29.7 sq. metres (319.6 sq. feet)



Total area: approx. 59.9 sq. metres (645.0 sq. feet)



Energy Efficiency Rating		
	Current	Potential
Very energy efficient - lower running costs		
(92 plus) A		91
(81-91) B		
(69-80) C	75	
(55-68) D		
(39-54) E		
(21-38) F		
(1-20) G		
Not energy efficient - higher running costs		
England & Wales	EU Directive 2002/91/EC	

Viewing

Please contact The Homes Group on 01322 875000 if you wish to arrange a viewing appointment for this property or require further information.

These particulars, whilst believed to be accurate are set out as a general outline only for guidance and do not constitute any part of an offer or contract. Intending purchasers should not rely on them as statements of representation of fact, but must satisfy themselves by inspection or otherwise as to their accuracy. No person in this firm's employment has the authority to make or give any representation or warranty in respect of the property.