



Roundwell, Maidstone, ME14 4HN
Offers in excess of £700,000 Freehold



Located in Kent's picturesque and popular village of Bearsted, near Maidstone, this lovely Grade II listed cottage offers a wonderful mix of period charm and contemporary living. The house is believed to date back to the 16th Century and was extended in recent years to offer spacious living for a three-bedroom property, combined with three bathrooms and lots of built-in storage. The period features include the main fireplace and surround in the living room and exposed beams.

Bearsted offers a selection of local shops, pubs, golf course, parks including the very popular Woodland Trust park, services, railway station with regular services to London, and highly regarded primary schools. Whereas nearby Maidstone provides a good selection of shops, restaurants, parks, services, library and the main local hospital.

The property's benefits include: three reception rooms, study area, modern fitted kitchen/breakfast room, three bathrooms, three double bedrooms with built in storage, underfloor heating, period features, an impressive fireplace, home cinema installation, bloc paved driveway and parking area, carport, and a large 32'5 barn/entertaining area.

Main entrance

Living room

15'7 x 15'7 narrowing to 11'9 (4.75m x 4.75m narrowing to 3.58m)

Dining room

15'7 x 9'1 (4.75m x 2.77m)

Kitchen/breakfast room

14'6 x 13'2 (4.42m x 4.01m)

Office

9'11 x 6'3 (3.02m x 1.91m)

Reception room

9'11 x 8'9 (3.02m x 2.67m)

Shower room

5'0 x 4'6 (1.52m x 1.37m)

Landing

Master bedroom

15'9 x 15'0 at widest (4.80m x 4.57m at widest)

En-suite

6'0 x 4'9 (1.83m x 1.45m)

Bedroom two

11'2 x 12'2 narrowing to 9'5 (3.40m x 3.71m narrowing to 2.87m)

Bedroom three

15'9 x 9'9 (4.80m x 2.97m)

Bathroom

9'7 x 6'5 (2.92m x 1.96m)

Barn/entertaining space

32'5 x 17'4 (9.88m x 5.28m)

Carport

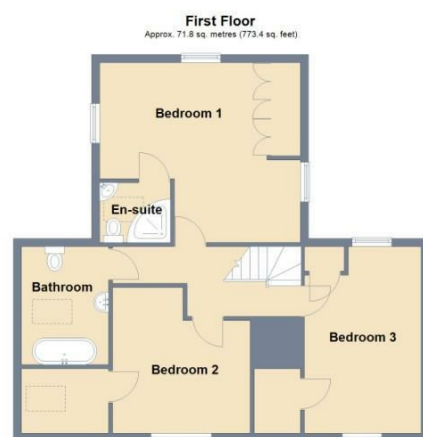
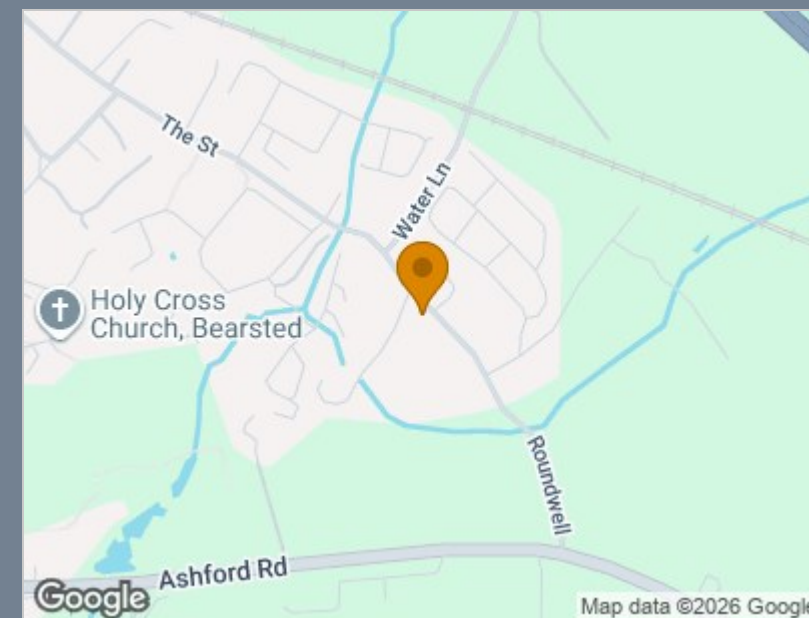
17'4 x 10'10 (5.28m x 3.30m)

Tenure: Freehold

Council Tax: Band F







Total area: approx. 217.8 sq. metres (2344.7 sq. feet)

Viewing

Please contact The Homes Group Office on 01322 875000 if you wish to arrange a viewing appointment for this property or require further information.

These particulars, whilst believed to be accurate are set out as a general outline only for guidance and do not constitute any part of an offer or contract. Intending purchasers should not rely on them as statements of representation of fact, but must satisfy themselves by inspection or otherwise as to their accuracy. No person in this firm's employment has the authority to make or give any representation or warranty in respect of the property.

71-75 Shelton Street, London, WC2H 9JQ
T: 01322 875000 | E: info@thehomesgroup.co.uk
thehomesgroup.co.uk