



Northdown Road, Welling, DA16 1NP
Guide price £525,000 - £550,000 Freehold

 4
  2
  2
  D

Guide Price £525,000 - £550,000. Located on the Welling/Bexleyheath borders, The Homes Group are delighted to present to the market this extended four bedroom semi-detached house situated with 0.8 miles of both Bexleyheath and Welling Stations and within a mile of Bexley Grammar School.

The accommodation comprises of a 22'7 x 13'3 living/dining room, an extended 16'5 x 10'6 kitchen/diner, a 17'10 x 9' conservatory plus a bathroom on the ground floor. On the first floor there are four bedrooms and a shower room.

There is a 50' garden to the rear which has a covered play area and an office/playroom. There is space for one car on the driveway.

Enclosed Porch

Entrance Hall

Living / Dining Room

22'7 x 13'3 (6.88m x 4.04m)

Kitchen / Diner

16'5 x 10'6 (5.00m x 3.20m)

Conservatory

17'10 x 9' (5.44m x 2.74m)

Ground floor Bathroom

Landing

Bedroom One

12' x 8'10 to wardrobes (3.66m x 2.69m to wardrobes)

Bedroom Two

10'7 x 8'8 (3.23m x 2.64m)

Bedroom Three

10'6 x 8'5 (3.20m x 2.57m)

Bedroom Four

8'5 x 6'4 (2.57m x 1.93m)

First Floor Shower Room

Rear Garden

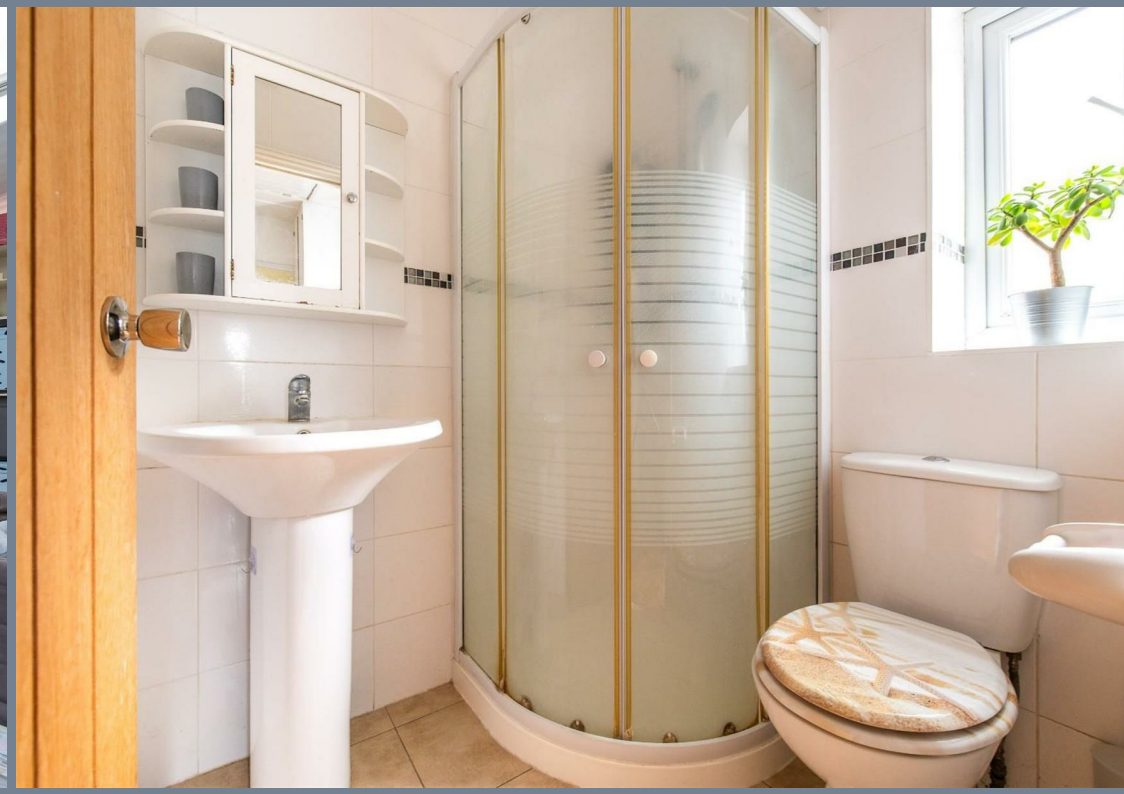
50' (15.24m)

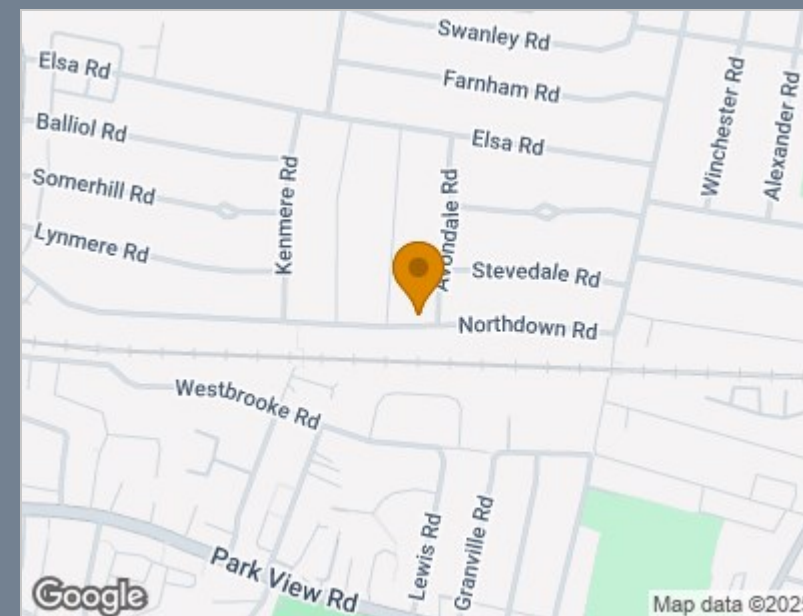
Driveway to front

Tenure - Freehold

Council Tax - Band D







Energy Efficiency Rating		
	Current	Potential
Very energy efficient - lower running costs		
(92 plus) A		
(81-91) B		81
(69-80) C		
(55-68) D	65	
(39-54) E		
(21-38) F		
(1-20) G		
Not energy efficient - higher running costs		
England & Wales	EU Directive 2002/91/EC	

Viewing

Please contact The Homes Group Office on 01322 875000 if you wish to arrange a viewing appointment for this property or require further information.

These particulars, whilst believed to be accurate are set out as a general outline only for guidance and do not constitute any part of an offer or contract. Intending purchasers should not rely on them as statements of representation of fact, but must satisfy themselves by inspection or otherwise as to their accuracy. No person in this firm's employment has the authority to make or give any representation or warranty in respect of the property.