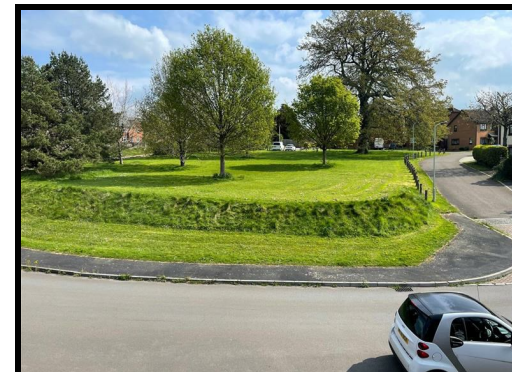




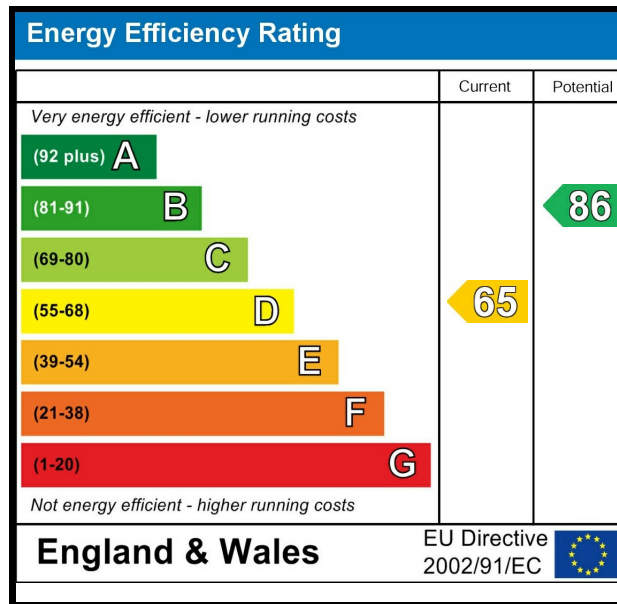
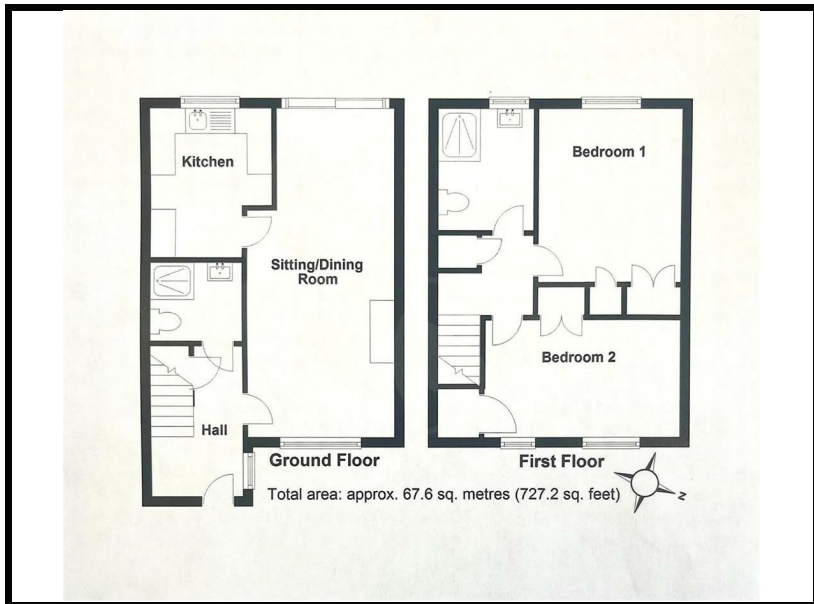
TO LET

8 Honeylands Drive, Exeter, EX4 8QP

£190,000



- EXCLUSIVE RETIREMENT DEVELOPMENT
- NO ONWARD CHAIN
- Resident Site Manager 9am - 5pm
- Age Restriction - 55 and over.
- Lounge/Diner, Kitchen
- 2 Double Bedrooms
- 2 Shower Rooms (one ground floor)
- uPVC Double Glazing & Electric Heating
- Private and Sunny Patio Garden
- Communal Grounds & Residents'/Visitors Parking



## THE PROPERTY

MOTIVATED SELLER - PRICED TO SELL - RETIREMENT OPPORTUNITY - An exciting opportunity to acquire this 2 double bedroom freehold retirement property forming part of an exclusive retirement development with resident site manager and 24 hour emergency call system. The property is conveniently located for public transport to and from the city centre by using the nearby bus service or picking up the train at Polsloe Station (Exeter - Exmouth) some 10 -15 minutes by foot.

## SITUATION

## Directions

