



2 Elm Cottages

Great Houghton, Barnsley, S72 0AN

£190,000

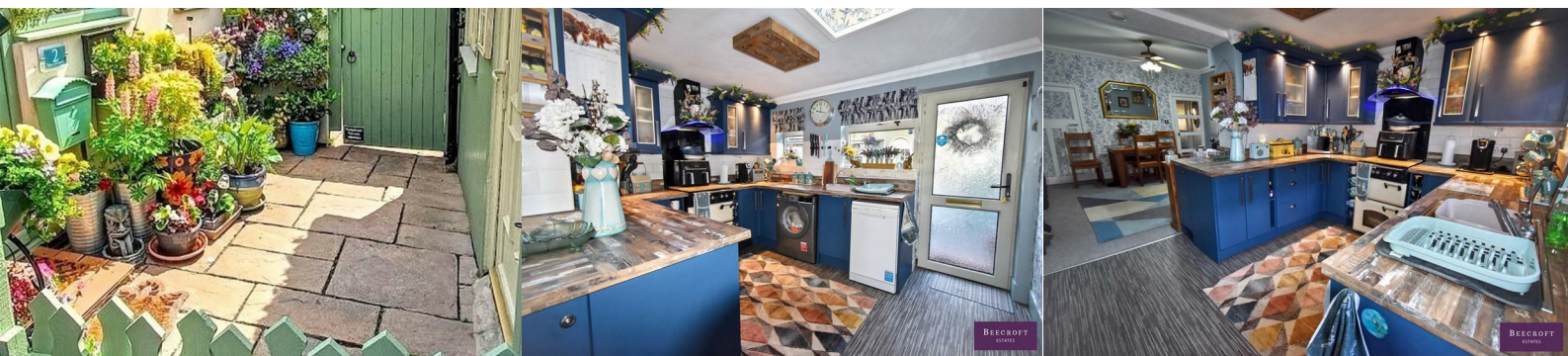


Discover the charm of this stone-built cottage in the heart of Great Houghton — a home that blends timeless character with thoughtful modern touches.

Boasting a stylish kitchen with open-plan dining, a cosy lounge with a log-burning stove, and a snug with an inviting inside/outside feel thanks to the French-style doors that open out to a good-sized, enclosed, and private garden. Beyond the garden, you'll find off-street parking with gated access.

Upstairs offers two generously sized bedrooms and a contemporary bathroom suite. To the second floor is a well-proportioned third bedroom with useful storage.

This beautiful character home simply must be viewed to be fully appreciated.



GROUND FLOOR

KITCHEN

A spacious kitchen area featuring fitted wall and base units, complemented by solid wood worktops incorporating a sink unit with mixer tap. There is space for an Aga-style oven, plumbing for a washing machine, an entrance door, rear double-glazed window, and a radiator.

DINING ROOM

Open-plan with the kitchen and offering ample space for a dining table, this area also benefits from a door providing access to the basement.

LOUNGE

A beautiful and cosy lounge featuring a log-burning stove set on a stone hearth, open-plan with the snug area.

SNUG

The snug offers a cosy atmosphere, featuring a wall-hung electric fire. French-style doors overlook the rear garden, while Velux-style skylights allow natural light to flow into the room.

Basement

This versatile room, carpeted for comfort, can easily be used as a home office, gym, or bar area.

FIRST FLOOR

BEDROOM ONE

A double bedroom featuring a double-glazed window, radiator, and a fitted walk-in storage/wardrobe.

BEDROOM TWO

A spacious second bedroom featuring a double-glazed window and radiator.

BATHROOM

A quirky-style bathroom featuring a freestanding bath, vanity wash hand basin, and WC. The room benefits from a double-glazed window with obscure glass and a heated towel ladder rail.

SECOND FLOOR

ATIIC BEDROOM THREE

This generously sized third bedroom features fitted storage in the eaves, a Velux window, and a radiator.

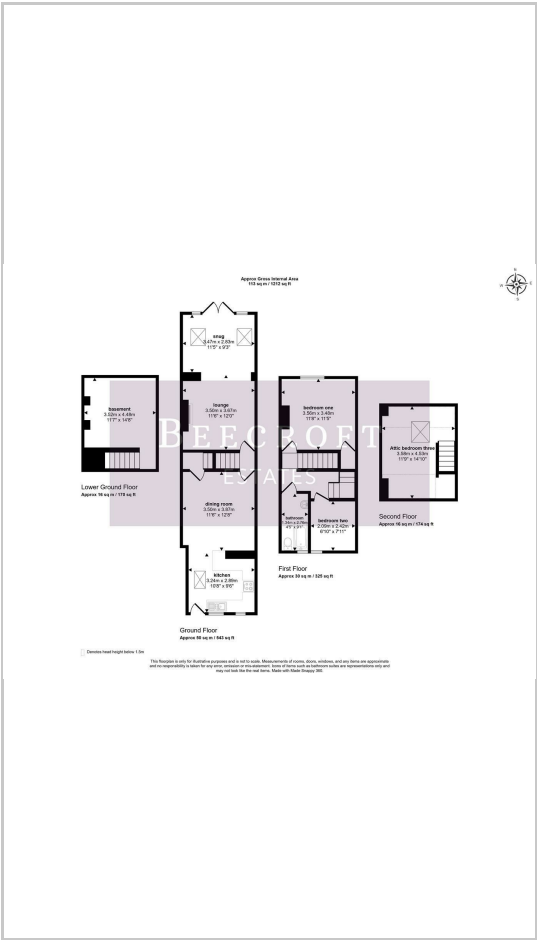
OUTSIDE

To the front is a generously sized garden, featuring a variety of shrubs and borders, which in turn leads to the gated off-road parking area. To the rear of the property is a small courtyard area, complete with outdoor storage.

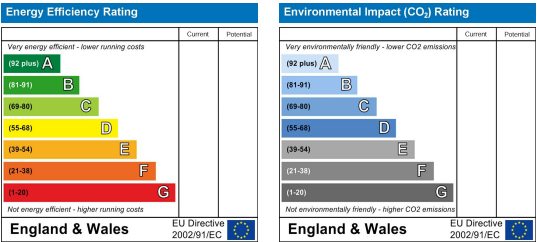
Area Map



Floor Plans



Energy Efficiency Graph



These particulars, whilst believed to be accurate are set out as a general outline only for guidance and do not constitute any part of an offer or contract. Intending purchasers should not rely on them as statements of representation of fact, but must satisfy themselves by inspection or otherwise as to their accuracy. No person in this firms employment has the authority to make or give any representation or warranty in respect of the property.