



156 Hough Lane

Wombwell, Barnsley, S73 0EF

£125,000

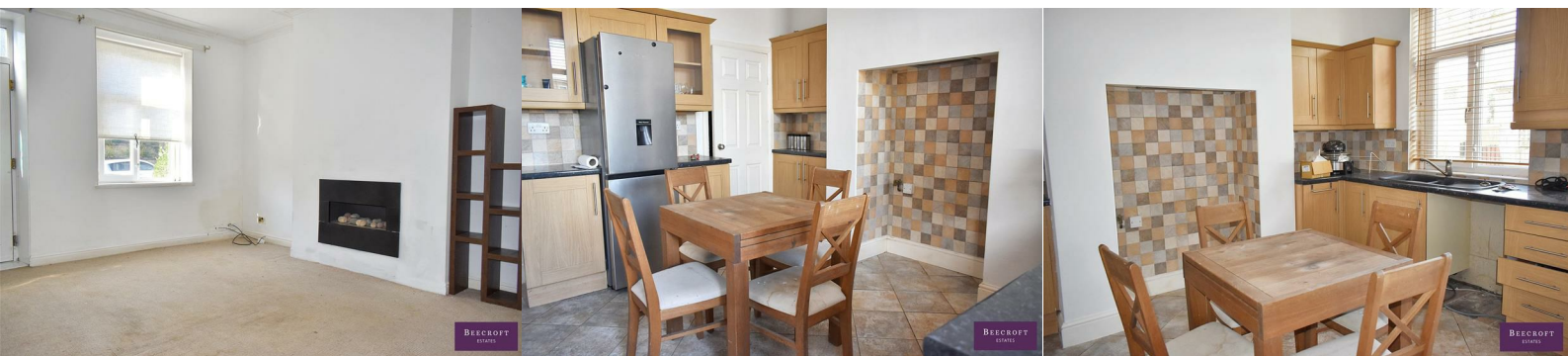


Spacious Three-Bedroom End Terrace with Attic Room, Garage & Parking

This well-presented end terrace home offers three well-proportioned bedrooms plus a versatile attic room with Velux window and carpet — ideal as a home office, gaming room, or hobby space, accessed via fixed steps.

The property also benefits from a detached garage and off-road parking to the rear, along with a spacious dining kitchen, separate lounge, and useful cellar for storage.

Situated in a convenient location close to local amenities, the train station, and excellent transport links, this home would make an ideal purchase for a first-time buyer or downsizer.

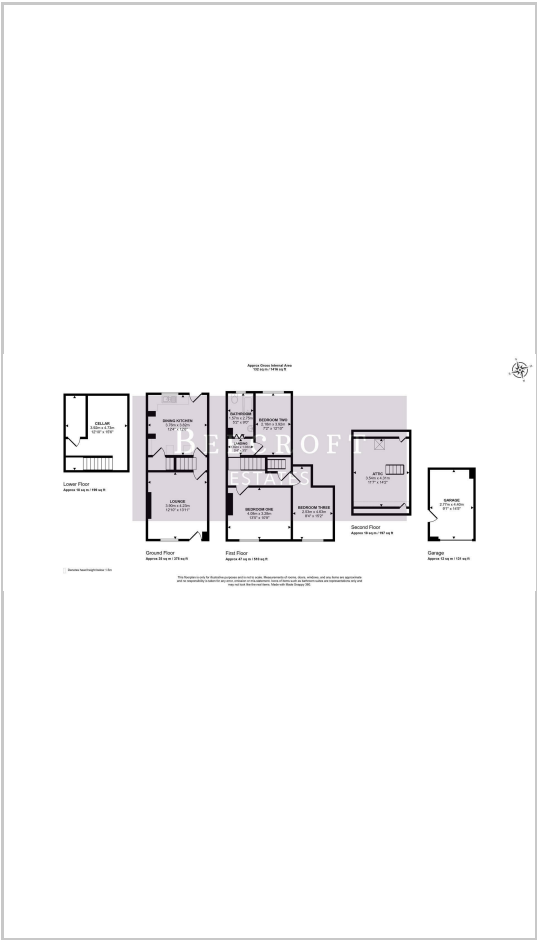


- GROUND FLOOR
- LOUNGE
- DINING KITCHEN
- CELLAR
- FIRST FLOOR
- BEDROOM ONE
- BEDROOM TWO
- BEDROOM THREE
- BATHROOM
- ATTIC ROOM
- OUTSIDE

Area Map



Floor Plans



Energy Efficiency Graph



These particulars, whilst believed to be accurate are set out as a general outline only for guidance and do not constitute any part of an offer or contract. Intending purchasers should not rely on them as statements of representation of fact, but must satisfy themselves by inspection or otherwise as to their accuracy. No person in this firms employment has the authority to make or give any representation or warranty in respect of the property.