



4 Foundry Gate

Wombwell, Barnsley, S73 0LF

£240,000

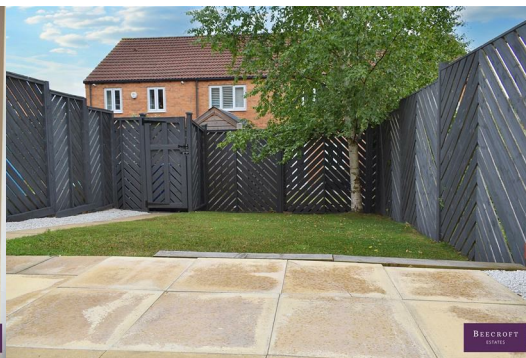


A Fantastically Presented 4-Bedroom Mid Townhouse in a Sought-After Location

Immaculately presented and ready to move straight into, this stunning four-bedroom mid-townhouse is located on the highly desirable Foundry Gate estate in Wombwell. Offering spacious and versatile accommodation throughout, this home is ideal for families or professionals seeking comfort and convenience.

Situated in a prime position, the property benefits from excellent transport links — just a short walk to the train station and with easy access to major network roads connecting to Rotherham, Sheffield, Leeds, and Wakefield.

A viewing is essential to fully appreciate the space, quality, and lifestyle this impressive home has to offer.

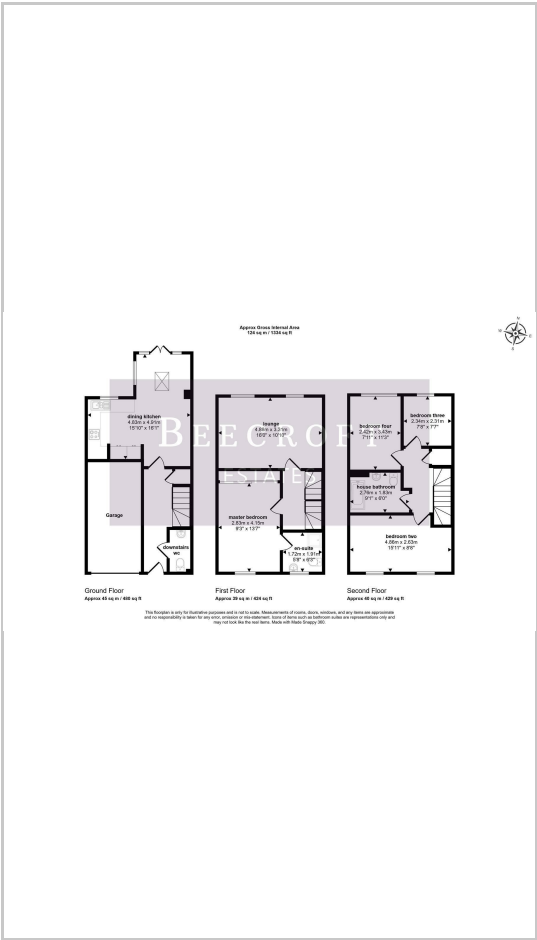


- GROUND FLOOR
- ENTRANCE HALL
- DINING KITCHEN
- DOWNSTAIRS WC
- FIRST FLOOR
- LOUNGE
- MASTER BEDROOM
- EN-SUITE
- SECOND FLOOR
- BEDROOM TWO
- BEDROOM TWO
- BEDROOM THREE
- HOUSE BATHROOM
- OUTSIDE

Area Map



Floor Plans



Energy Efficiency Graph



These particulars, whilst believed to be accurate are set out as a general outline only for guidance and do not constitute any part of an offer or contract. Intending purchasers should not rely on them as statements of representation of fact, but must satisfy themselves by inspection or otherwise as to their accuracy. No person in this firms employment has the authority to make or give any representation or warranty in respect of the property.