



14E Burntwood Road

Grimethorpe, Barnsley, S72 7JF

Offers Over £175,000

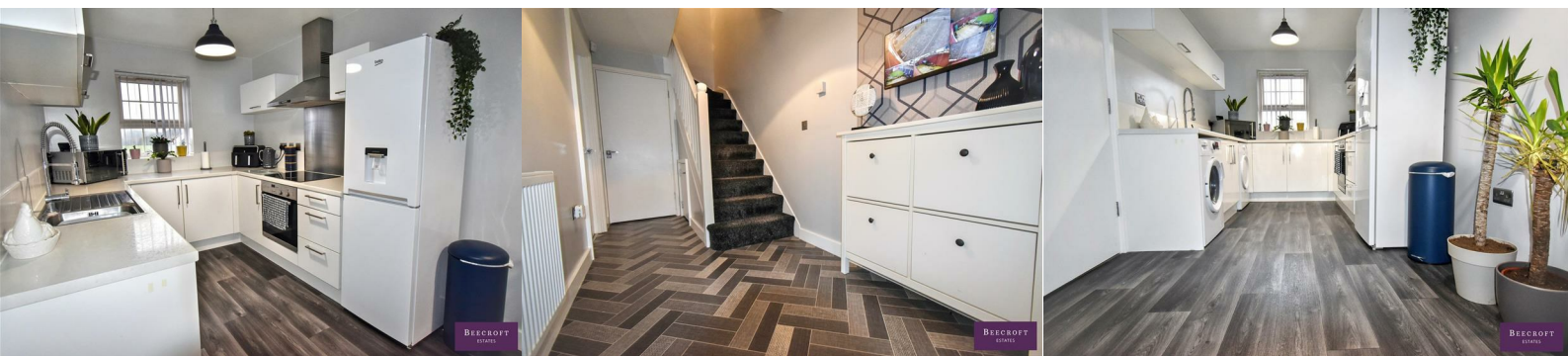


Immaculate End-Town House with Open Field Views

We are delighted to offer for sale this immaculately presented end town house, which has been meticulously maintained throughout. An internal viewing is highly recommended to fully appreciate the space, presentation, and setting on offer.

The property is entered via a double-glazed front door into a spacious and welcoming hallway, with stairs rising to the first floor and doors providing access to the principal living accommodation and a convenient downstairs cloakroom.

The ground floor features attractive open-plan living accommodation, beginning with a generous kitchen area. A double-glazed window to the front enjoys open views across fields, while the kitchen itself is comprehensively fitted with a range of wall and base units, complemented by ample worktop space. Integrated appliances include a hob, oven, and extractor fan, with additional plumbing for a washing machine and

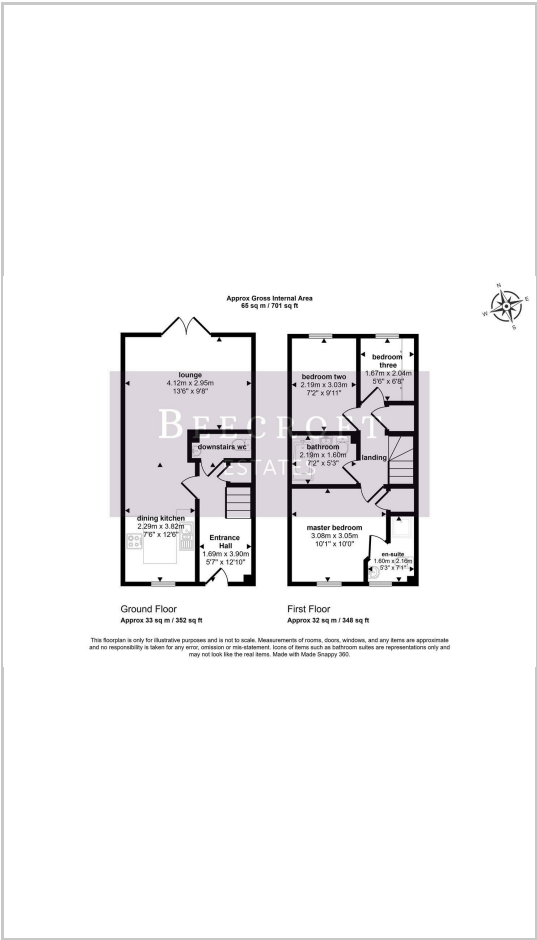


- GROUND FLOOR
- ENTRANCE HALL
- DOWNSTAIRS WC
- LOUNGE
- DINING KITCHEN
- FIRST FLOOR
- LANDING
- MASTER BEDROOM
- EN-SUITE
- BEDROOM TWO
- BEDROOM THREE
- OUTSIDE

Area Map



Floor Plans



Energy Efficiency Graph



These particulars, whilst believed to be accurate are set out as a general outline only for guidance and do not constitute any part of an offer or contract. Intending purchasers should not rely on them as statements of representation of fact, but must satisfy themselves by inspection or otherwise as to their accuracy. No person in this firms employment has the authority to make or give any representation or warranty in respect of the property.