



Cherry Tree Cottage Middlecliff Lane

Little Houghton, Barnsley, S72 0HW

Guide Price £400,000



Guide Price £400,000 – £415,000

Four-Bedroom End Cottage in an Exclusive Private Mews

Offered for sale is this exceptional four-bedroom end cottage, thoughtfully converted from a former farm building and forming part of a small collection of homes within an exclusive and private mews development. Combining character, generous proportions, and modern living, this is a truly distinctive home.

Key Features Include:

Loft, ideal for conversion subject to the necessary planning consent

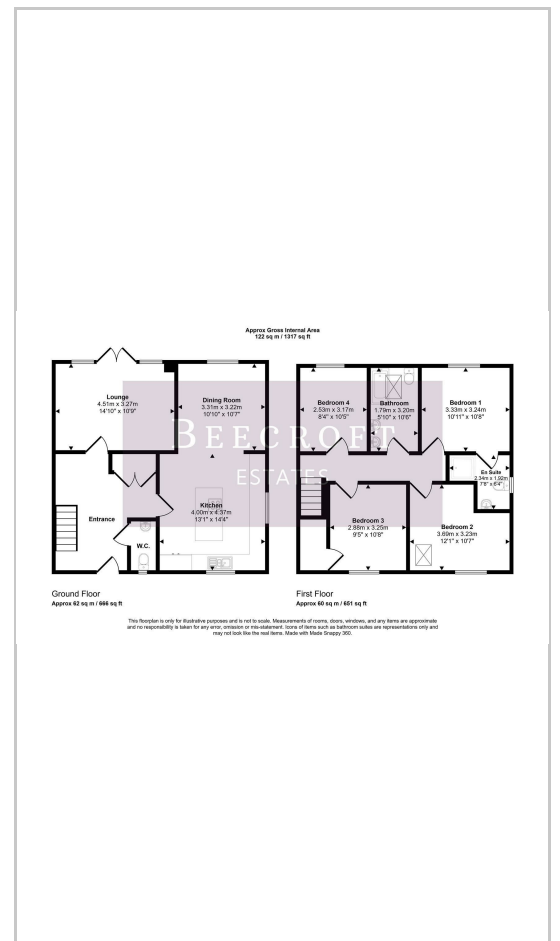


- GROUND FLOOR
- ENTRANCE HALL
- CLOAKROOM
- DINING ROOM
- BREAKFAST KITCHEN
- LOUNGE
- FIRST FLOOR LANDING
- MASTER BEDROOM
- EN-SUITE
- BEDROOM TWO
- BEDROOM THREE
- BEDROOM FOUR
- HOUSE BATHROOM
- OUTSIDE
- DETACHED SINGLE GARAGE

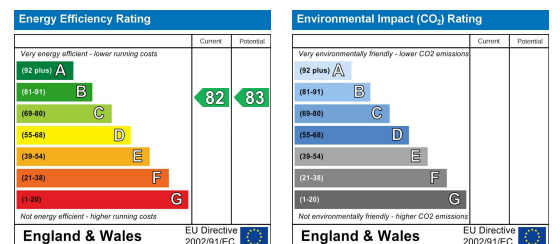
Area Map



Floor Plans



Energy Efficiency Graph



These particulars, whilst believed to be accurate are set out as a general outline only for guidance and do not constitute any part of an offer or contract. Intending purchasers should not rely on them as statements of representation of fact, but must satisfy themselves by inspection or otherwise as to their accuracy. No person in this firm's employment has the authority to make or give any representation or warranty in respect of the property.