



29 Cromwell Road

, Mexborough, S64 9BB

£90,000



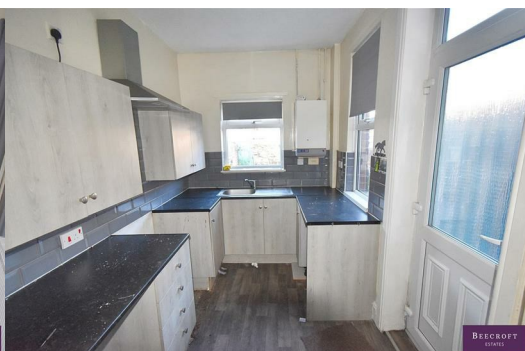
Two Bedroom Mid-Terrace – Ideal Investment or First-Time Buy

Offered to the market is this two bedroom mid-terrace property, ideally suited to first-time buyers or investors. The property is in need of some modernisation, providing an excellent opportunity to add value.

Internally, the accommodation comprises a lounge, dining room, kitchen, two bedrooms, and a bathroom.

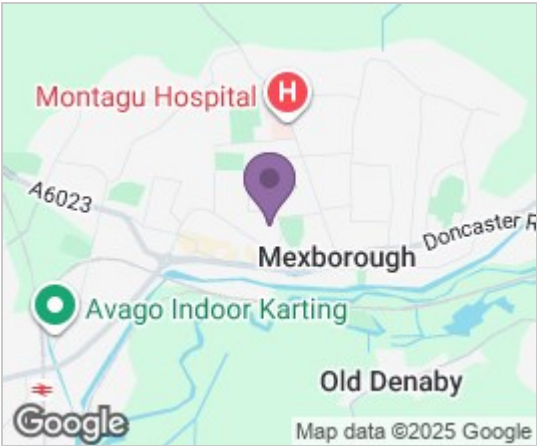
Externally, there is a rear garden and on-street parking available.

With an estimated rental income of approximately £650 per calendar month, this property represents a strong potential yield for landlords.

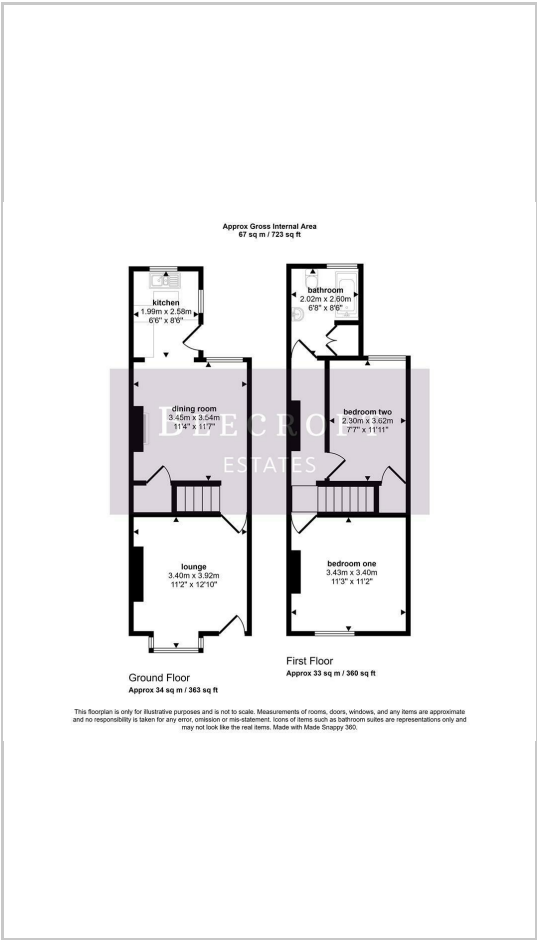


- GROUND FLOOR
- LOUNGE
- DINING ROOM
- KITCHEN
- FIRST FLOOR
- BEDROOM ONE
- BEDROOM TWO
- BATHROOM
- OUTSIDE

Area Map



Floor Plans



Energy Efficiency Graph



These particulars, whilst believed to be accurate are set out as a general outline only for guidance and do not constitute any part of an offer or contract. Intending purchasers should not rely on them as statements of representation of fact, but must satisfy themselves by inspection or otherwise as to their accuracy. No person in this firms employment has the authority to make or give any representation or warranty in respect of the property.