



Meadow Bank Road

, Rotherham, S61 2NF

£900,000

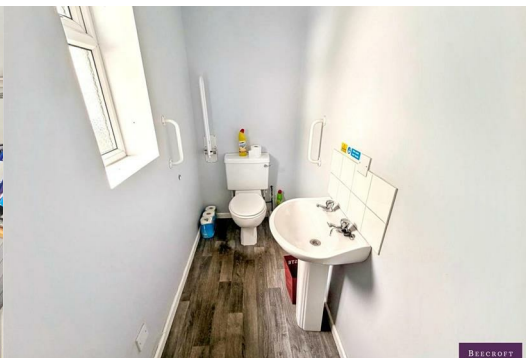


OFFERED FOR SALE OR TO LET (52K PER ANNUM RENTAL INCOME)

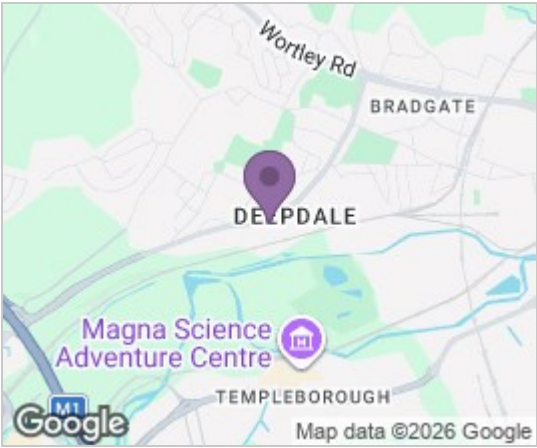
FOR FURTHER INFORMATION OR A VIEWING PLEASE CONTACT R&R Motor Group
01709 554644
07777 136454

PRIME COMMERCIAL DEVELOPMENT OPPORTUNITY
MEADOW BANK ROAD, ROTHERHAM

Rare opportunity to acquire a highly prominent commercial development site positioned between Rotherham town centre, Meadowhall and Junction 34 of the M1.



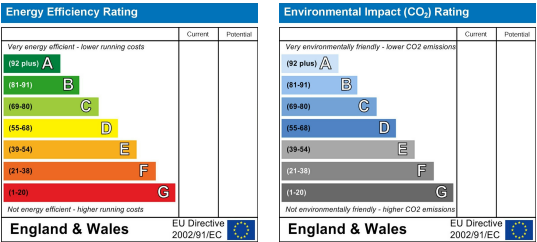
Area Map



Floor Plans



Energy Efficiency Graph



These particulars, whilst believed to be accurate are set out as a general outline only for guidance and do not constitute any part of an offer or contract. Intending purchasers should not rely on them as statements of representation of fact, but must satisfy themselves by inspection or otherwise as to their accuracy. No person in this firm's employment has the authority to make or give any representation or warranty in respect of the property.