



## 30a Old Wortley Road

, Rotherham, S61 1NH

£260,000

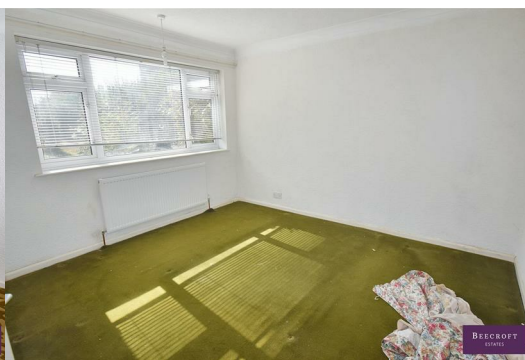


2/3 Bedroom Detached Bungalow with No Onward Chain – Full Renovation Opportunity

In need of full modernisation, this 2/3 bedroom detached bungalow is set on generous grounds and offers the potential purchaser an exciting opportunity to put their own stamp on the property.

Requiring a complete refurbishment—so not for the faint-hearted—this home is located in a popular area of Rotherham and boasts no onward chain. The plot size also offers scope to extend, subject to the necessary planning permissions.

A fantastic investment or self-build project in a sought-after location—viewing is essential to appreciate the potential.





- GROUND FLOOR
- ENTRANCE HALL
- LOUNGE
- DINING KITCHEN
- BEDROOM ONE
- BEDROOM TWO
- UTILITY/BEDROOM THREE
- BATHROOM
- OUTSIDE

Area Map



Floor Plans



Energy Efficiency Graph



These particulars, whilst believed to be accurate are set out as a general outline only for guidance and do not constitute any part of an offer or contract. Intending purchasers should not rely on them as statements of representation of fact, but must satisfy themselves by inspection or otherwise as to their accuracy. No person in this firms employment has the authority to make or give any representation or warranty in respect of the property.