



2a Kings Road

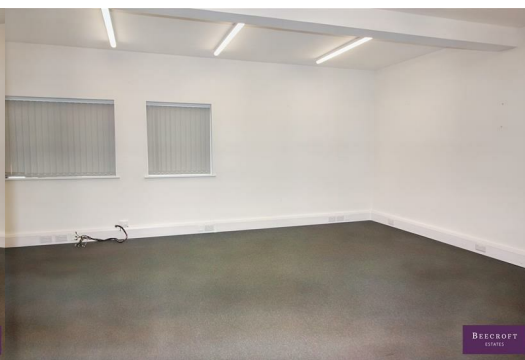
Wombwell, Barnsley, S73 0DW

£60,000



Versatile Commercial Unit – Sold with Tenant in Situ

This multi-purpose unit is currently let and trading as a holistic therapy business, offering a ready-made investment opportunity with tenant in situ.



- Entrance
- Large Room
- Rear Room
- Store Cupboard
- Kitchen
- WC

Area Map



Floor Plans



Energy Efficiency Graph



These particulars, whilst believed to be accurate are set out as a general outline only for guidance and do not constitute any part of an offer or contract. Intending purchasers should not rely on them as statements of representation of fact, but must satisfy themselves by inspection or otherwise as to their accuracy. No person in this firms employment has the authority to make or give any representation or warranty in respect of the property.