



42 Lesley Road

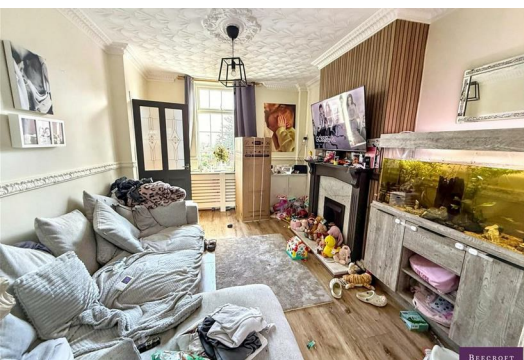
Goldthorpe, Rotherham, S63 9DH

£99,000



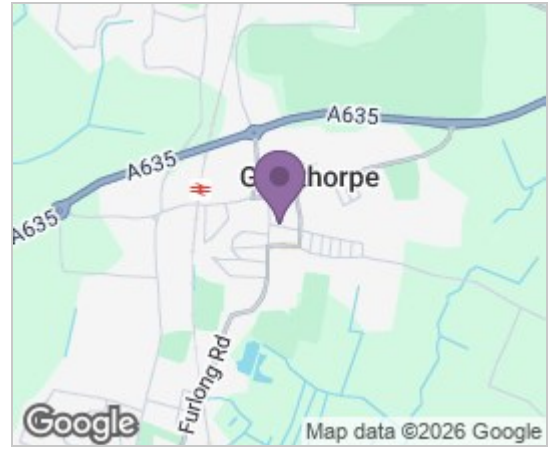
An excellent investment opportunity generating £695 PCM and offered for sale with tenants in situ.

This well-proportioned two-bedroom mid-terrace property benefits from spacious accommodation throughout and occupies a convenient location close to local schools, supermarkets, and everyday amenities. With a tenant already in place, the property provides an immediate income stream and would make an ideal addition to any investment portfolio.

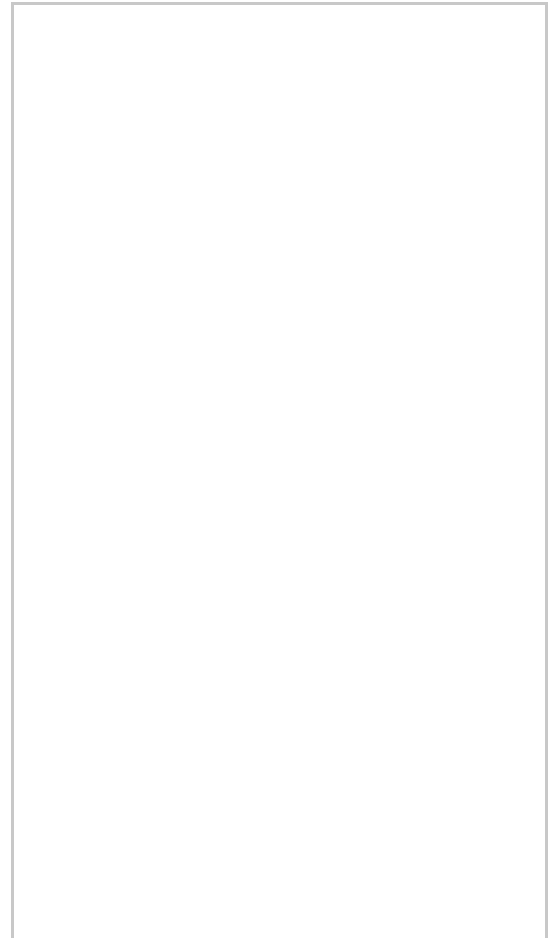


GROUND FLOOR
 ENTRANCE
 LOUNGE
 DINING KITCHIN
 BATHROOM
 FIRST FLOOR
 BEDROOM ONE
 BEDROOM TWO
 OUTSIDE

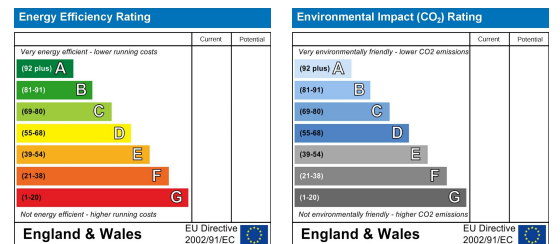
Area Map



Floor Plans



Energy Efficiency Graph



These particulars, whilst believed to be accurate are set out as a general outline only for guidance and do not constitute any part of an offer or contract. Intending purchasers should not rely on them as statements of representation of fact, but must satisfy themselves by inspection or otherwise as to their accuracy. No person in this firm's employment has the authority to make or give any representation or warranty in respect of the property.