



## 23 Cover Drive

Darfield, Barnsley, S73 9HE

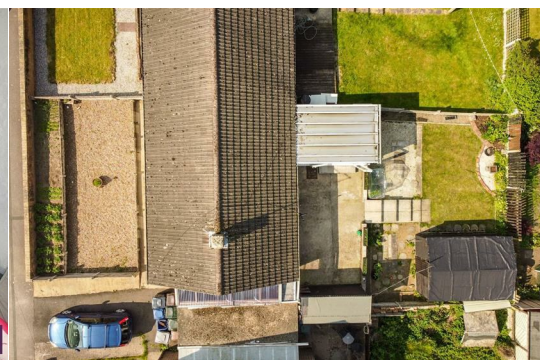
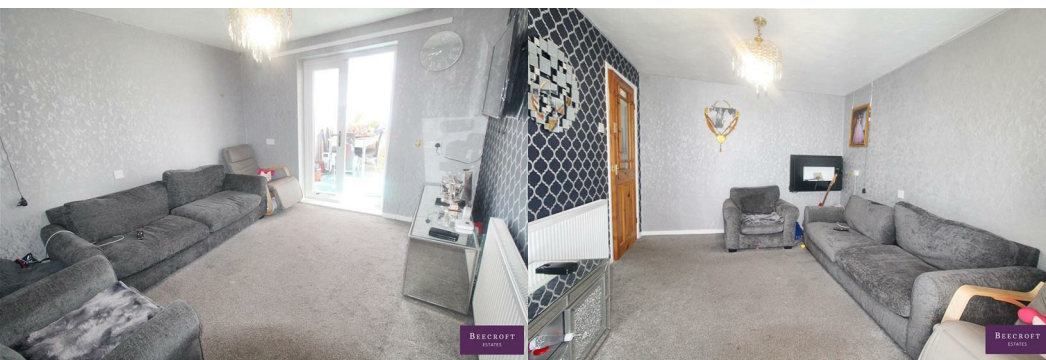
£140,000



No Chain – Spacious 2 Bedroom Semi-Detached Bungalow in Sought-After Darfield Village

Offered to the market with no vendor chain, this well-proportioned and competitively priced two-bedroom semi-detached bungalow is located in the heart of the ever-popular village of Darfield.

Perfect for those looking to downsize, invest, or put their own stamp on a property, this home offers comfortable living space, a bright conservatory, and generous gardens to both the front and rear.





GROUND FLOOR

Entrance Hall

Lounge

Having a front facing double glazed window, feature fire with surround, tv aerial point and radiator.

Dining Kitchen

Comprising a range of wall and base units, worktop surface which incorporates the sink unit with mixer tap, space for a cooker, under counter fridge freezer and plumbing for a washing machine. Rear facing double glazed window and radiator.

Conservatory

Overlooking the rear garen.

Bedroom One

A double bedroom having a double glazed window and radiator.

Bedroom Two

Having a double glazed window and radiator.

Bathroom

A three piece suite.

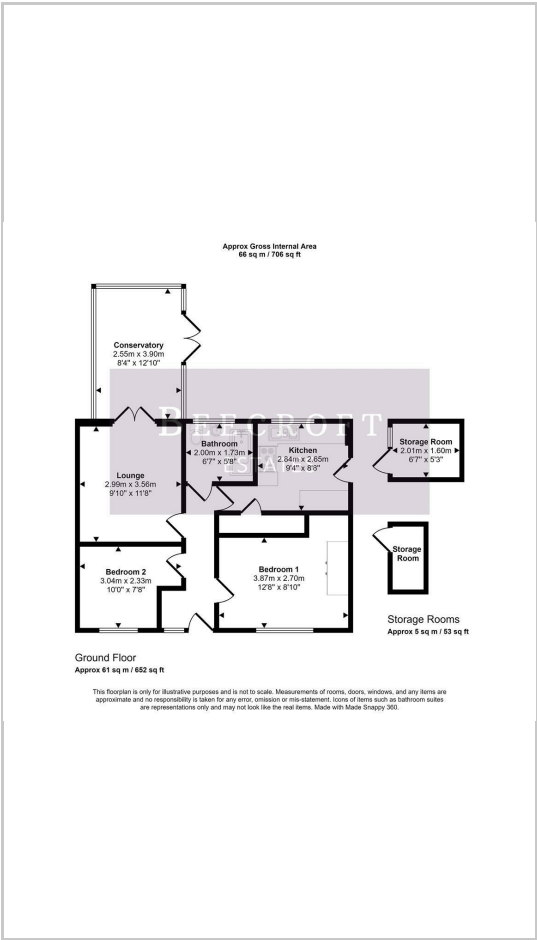
OUTSIDE

There is gardens front and rear and to the side provides off road parking.

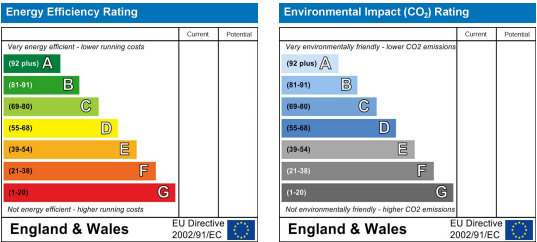
Area Map



Floor Plans



Energy Efficiency Graph



These particulars, whilst believed to be accurate are set out as a general outline only for guidance and do not constitute any part of an offer or contract. Intending purchasers should not rely on them as statements of representation of fact, but must satisfy themselves by inspection or otherwise as to their accuracy. No person in this firms employment has the authority to make or give any representation or warranty in respect of the property.