



## 35 Lancaster Street

Thurnscoe, Rotherham, S63 0HL

Offers Around £110,000



### NEST OR INVEST!!!

Be quick to view this three bedroom Semi-Detached family home, located in the sought-after area of Thurnscoe, Rotherham, this good size property offers a fantastic opportunity for first-time buyers looking to step onto the property ladder, or investors seeking a property with strong rental potential. Situated close to Thurnscoe train station with direct links to Sheffield and Leeds, it offers excellent transport connections. The area is well-served by local schools, shops, and amenities, with easy access to the Dearne Valley Parkway and A1/M1 motorway links. Green spaces and parks are nearby, making it a great location for families and tenants alike. With strong local rental demand, this property is a smart investment choice. Don't miss out—contact us today to arrange a viewing.



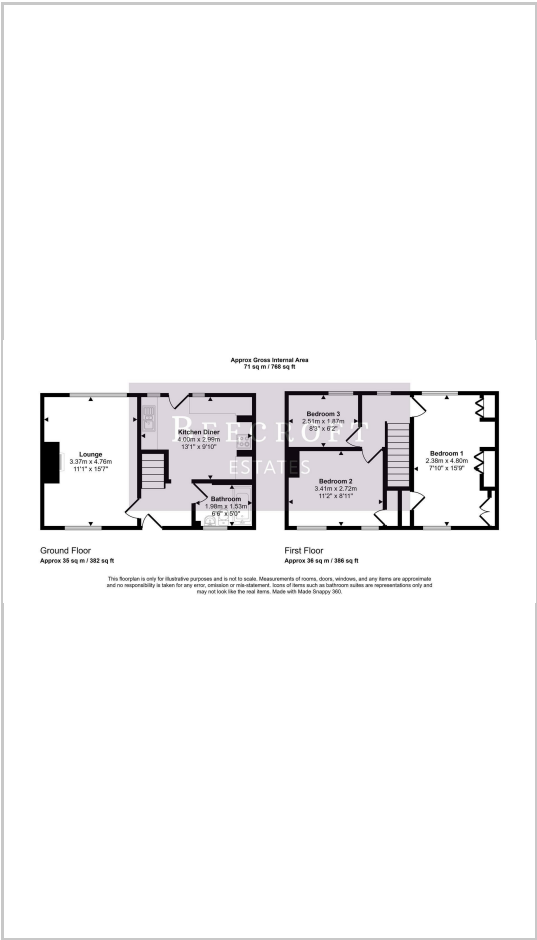


- Entrance Lobby
- Lounge
- Kitchen/Dlner
- Downstairs Bathroom
- Landing
- Master Bedroom
- Bedroom Two
- Bedroom Three
- Exterior

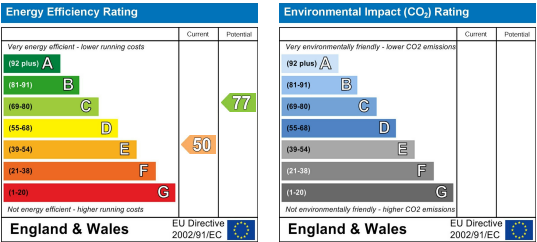
Area Map



Floor Plans



Energy Efficiency Graph



These particulars, whilst believed to be accurate are set out as a general outline only for guidance and do not constitute any part of an offer or contract. Intending purchasers should not rely on them as statements of representation of fact, but must satisfy themselves by inspection or otherwise as to their accuracy. No person in this firms employment has the authority to make or give any representation or warranty in respect of the property.