



130 Main Street

Goldthorpe, Rotherham, S63 9JW

Offers Over £65,000



Ideal Investment Opportunity or First-Time Buy – Well-Presented 2-Bedroom Mid Terrace Home

An excellent opportunity for investors or first-time buyers — this well-presented two-bedroom mid terrace home is ready to move straight into! Offering a good-sized rear garden with gated access that can also provide off-road parking, this property combines practicality with comfortable living.

Located close to local amenities, transport links, and schools, it's an ideal choice for anyone looking for a smart, low-maintenance home.

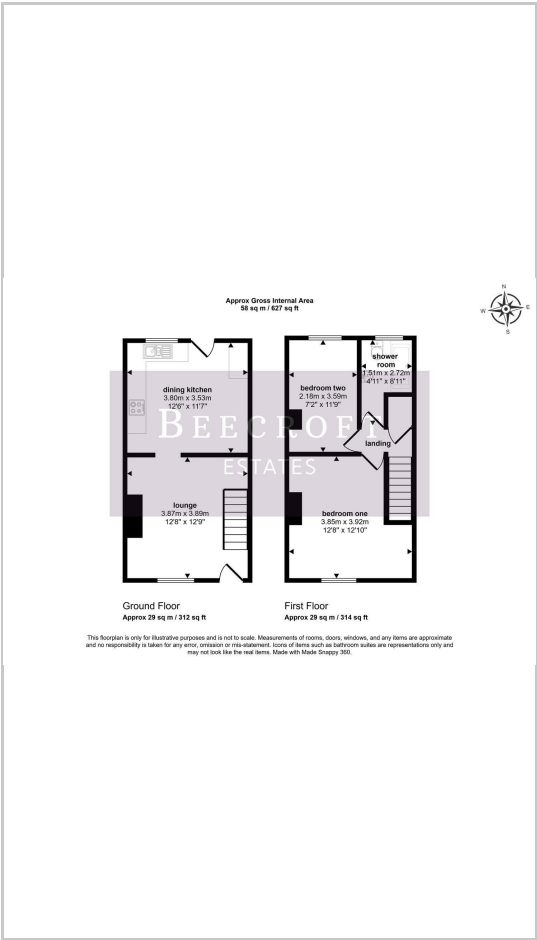


- GROUND FLOOR
- LOUNGE
- DINING KITCHEN
- BASEMENT
- FIRST FLOOR
- BEDROOM ONE
- BEDROOM TWO
- SHOWER ROOM
- OUTSIDE

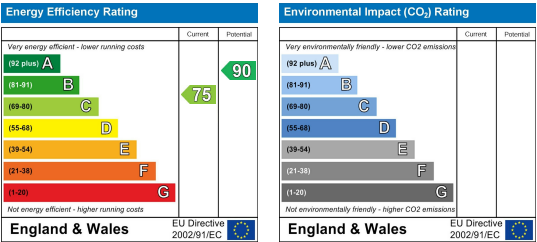
Area Map



Floor Plans



Energy Efficiency Graph



These particulars, whilst believed to be accurate are set out as a general outline only for guidance and do not constitute any part of an offer or contract. Intending purchasers should not rely on them as statements of representation of fact, but must satisfy themselves by inspection or otherwise as to their accuracy. No person in this firms employment has the authority to make or give any representation or warranty in respect of the property.