

Flat 25, 13, Homeberry House Ashcroft Gardens, Cirencester, GL7 1RU



Welcome to Homeberry House - First-floor retirement apartment (for over 60s) enjoys lift access and a charming communal garden. Ideally located in the heart of Cirencester, it's just moments from local amenities, including a pharmacy directly opposite. ** AVAILABLE NOW **

Flat 25, 13, Homeberry House Ashcroft Gardens, Cirencester, GL7 1RU

Key Features



1

Bedrooms



1

Bathrooms



1

Receptions

Description

Homeberry House is a well-regarded retirement development, ideally situated just moments from Cirencester town centre, next to Lloyds Pharmacy on Ashcroft Gardens.

This particular apartment has been recently redecorated and benefits from new carpets throughout. Residents enjoy a range of on-site amenities, including a beautifully maintained communal garden with gated access to Cricklade Street - ideal for shopping and local cafés. The development also offers a communal lounge, laundry room, guest suite for overnight visitors, a resident site warden, and a 24-hour careline service, creating a safe and welcoming environment.

Homeberry House

Homeberry House offers the convenience of a 24-hour emergency care line system and lift access to all floors. Residents can enjoy a comfortable lounge with a kitchenette, overlooking the well-maintained communal grounds. Additional amenities include a bookable guest suite for visitors and shared toilet facilities on the ground floor.

Location

Ideally located in the heart of Cirencester, with direct pedestrian access onto Cricklade Street. Cirencester itself offers a vibrant mix of high street shops, independent boutiques, and a popular weekly market. The town is well known for its charming selection of bistros, cafés, wine bars, and traditional pubs, catering to a variety of tastes.

Residents also benefit from access to a local cottage hospital, a modern leisure centre, and a beautiful outdoor swimming pool open from May to September. A wide range of sports is available in the area, including golf, tennis, horse riding, football, rugby, and cricket.

Essentials

Cotswold District Council - Tax Band: A - payable 2026/27 £1,691.85

Electric heating and hot water

EPC Rating: B

Notice to Tenants

These details are provided as a general guide. Room sizes are approximate and should not be used for precise measurements (e.g., carpets, curtains). The floor plan is for layout guidance only and is not to scale. All dimensions, shapes, and compass bearings are approximate and should be verified independently.

Please discuss any important aspects with our team before arranging a viewing.

Viewings

Please contact Paul or the Adkins team to arrange your viewing - Residential Sales | Lettings | Management | Holiday Homes | Commercial

Client Money Protection

Adkins is compliant with the mandatory regulation 'Client Money Protection Scheme' CMP, this protection is in place for the benefit of both tenants and landlords.

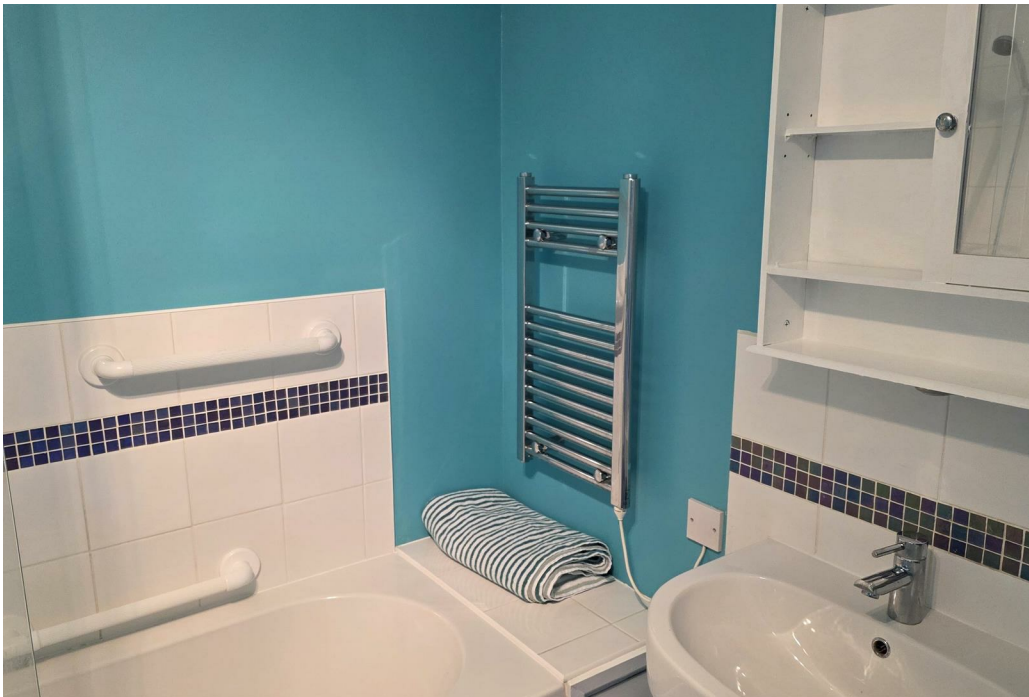
Compliance

We are members of The Property Ombudsman

Social Network

Like and Share our posts and receive notification when new listings become available @adkinsproperty



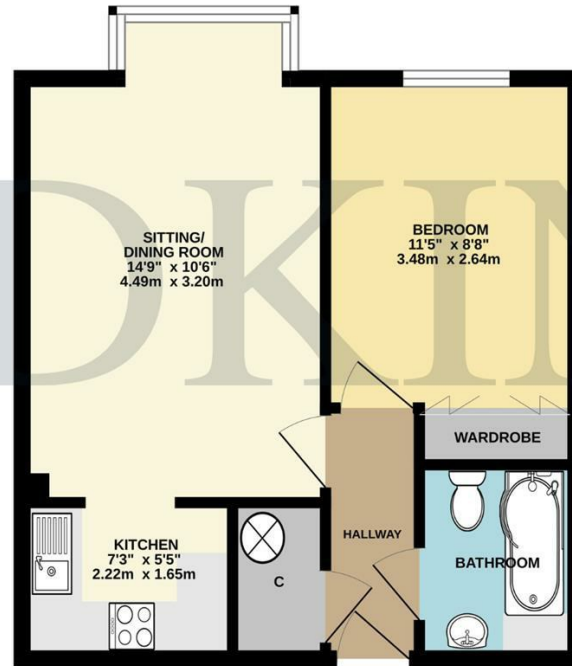




Flat 25, 13, Homeberry House Ashcroft Gardens, Cirencester, GL7 1RU

Floor Area: 452.09 sq ft

MAIN FLOOR
398 sq.ft. (37.0 sq.m.) approx.



TOTAL FLOOR AREA : 398 sq.ft. (37.0 sq.m.) approx.

Whilst every attempt has been made to ensure the accuracy of the floorplan contained here, measurements of doors, windows, rooms and any other items are approximate and no responsibility is taken for any error, omission or mis-statement. This plan is for illustrative purposes only and should be used as such by any prospective purchaser. The services, systems and appliances shown have not been tested and no guarantee as to their operability or efficiency can be given.
Made with Mempro ©2025



Disclaimer: These particulars have been provided as a general guide about the property. A survey hasn't been carried out, and room sizes should not be relied upon for furnishing purposes. If floorplans are included they are for guidance and illustration purposes. If there are any important matters that concern you, please contact us prior to viewings. We also like our clients to know that we work with many local companies and contractors, some of which may pay us a referral fee for recommending them.

Adkins Property Group
Cirencester Office Park
Unit 9, Tetbury Road, Cirencester, GL7 6JJ
T: 01285 239486
W: adkinspropertygroup.co.uk

