

4 Alexander House Spitalgate Lane, Cirencester, Gloucestershire, GL7 2DE



Welcome to Alexander House - This high specification and exclusive TWO DOUBLE BEDROOM apartment is located in the heart of Cirencester just a short walk from the Abbey grounds and the towns marketplace. Offering modern living on the first floor, this apartment is in lovely condition and includes an allocated off-road parking space. NO ONWARD CHAIN

4 Alexander House Spitalgate Lane, Cirencester, Gloucestershire, GL7 2DE

Key Features



2

Bedrooms



1

Bathrooms



1

Receptions

Description

The apartment is situated on the first floor at Alexander House and one of only four. Accessed via a light and airy communal lobby with stairs providing access to the apartment. On entering, you are greeted with an open-plan kitchen/diner and sitting room. The kitchen provides extensive worktop space with ample units and storage. It is fully fitted with many integral appliances such as; oven, hob, extractor, fridge/freezer, washing machine and dishwasher. There is a handy Velux window which creates a fresh and light atmosphere.

Towards the far end of the kitchen is a small hallway which leads to two double bedrooms and the bathroom. Both bedrooms are a good size and have windows looking towards the front of the building. The bathroom is finished to a high standard and provides a bath with shower over, vanity unit with hand basin, w/c and heated towel rail.

Essentials

Electric central heating and hot water, the windows are double glazed. EPC Rating: D

Parking

The forecourt is approached through a pair of stone pillars, there is one allocated parking space on the end by the left front wall.

Council tax

Cotswold District Council - PO Box 9, Council Offices, Trinity Road, Cirencester, GL7 1PY - 01285 623 000 : Valuation Band: B - 2025/26 - £1,877.02

Tenure

The apartment is leasehold and on a 999 year lease starting in 2015. The current 3 owners of the 4 apartments all pay £975 a year each apartment, management fee for the building insurance, window cleaning and occasional works and accountant.

Tenants in Situ

The apartment is currently occupied by an Assured Shorthold Tenancy agreement, further information is available by request.

Viewings

Please contact Paul or the Adkins team to arrange your viewing - Residential Sales | Lettings | Management | Holiday Homes | Commercial

Notice to Potential Buyers

These sales details are provided as a general guide. We have not conducted surveys or tested any services, appliances, or fittings. Room sizes are approximate and should not be used for precise measurements (e.g., carpets, curtains).

The floor plan is for layout guidance only and is not to scale. All dimensions, shapes, and compass bearings are approximate and should be verified independently.

Please discuss any important aspects with our team before arranging a viewing.

AML Compliance

In accordance with current Anti-Money Laundering regulations, all prospective buyers are required to complete identity and financial verification before an offer can be formally accepted or a Memorandum of Sale issued.

This process is carried out securely via Thirdfort, our approved independent compliance provider. Buyers will receive a secure link to complete identity, address, and financial verification remotely. A fee of £18 inclusive of VAT per buyer applies for AML verification. Where required, a Source of Funds check may also apply at £18 inclusive of VAT per transaction.

Please note that we are unable to formally accept an offer or progress negotiations until all AML requirements have been fully satisfied.

Social Media

Like and Share our posts and receive notification when new listings become available @adkinsproperty @fineandvillage

Are you thinking about Selling?

If you're looking to sell your own property you may be interested in instructing us, if you are then we would love the opportunity to provide you with our comprehensive market appraisal and sellers guide.

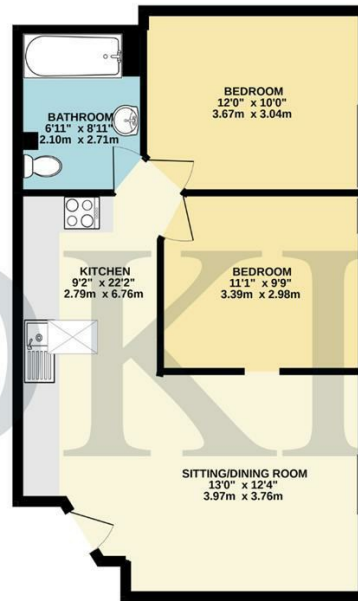




4 Alexander House Spitalgate Lane, Cirencester, Gloucestershire, GL7 2DE

Floor Area: sq ft

1ST FLOOR
573 sq.ft. (53.2 sq.m.) approx.



TOTAL FLOOR AREA: 573 sq.ft. (53.2 sq.m.) approx.
Whilst every attempt has been made to ensure the accuracy of the floorplan contained here, measurements of doors, windows, rooms and any other items are approximate and no responsibility is taken for any error, omission or misstatement. This plan is for illustrative purposes only and should be used as a guide for any prospective purchase. The services, systems and appliances shown have not been tested and no guarantee as to their operability or efficiency can be given.
Made with Metropac (2003)



Disclaimer: These particulars have been provided as a general guide about the property. A survey hasn't been carried out, and room sizes should not be relied upon for furnishing purposes. If floorplans are included they are for guidance and illustration purposes. If there are any important matters that concern you, please contact us prior to viewings. We also like our clients to know that we work with many local companies and contractors, some of which may pay us a referral fee for recommending them.

Adkins Property Group
Cirencester Office Park
Unit 9, Tetbury Road, Cirencester, GL7 6JJ
T: 01285 239486
W: adkinspropertygroup.co.uk

