

Valuers, Land & Estate Agents

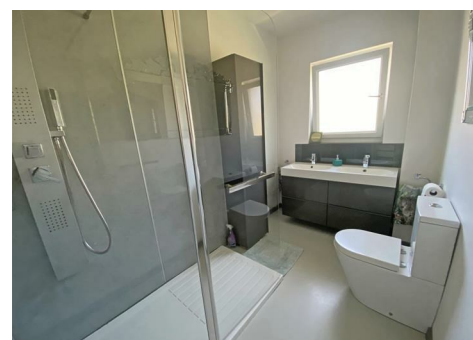
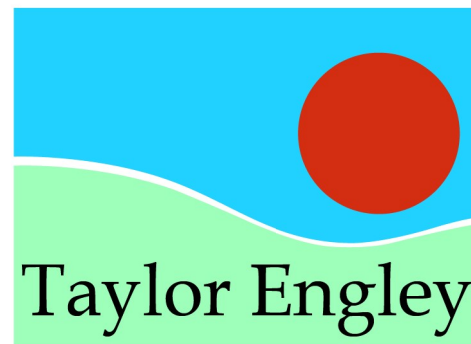
11 High Street, Hailsham
East Sussex BN27 1AL

Tel: (01323) 440000

Fax: (01323) 440750

hailsham@taylor-engley.co.uk

www.taylor-engley.co.uk



2 Field View, Gardner Street, Herstmonceux, Herstmonceux, East Sussex, BN27 4LF

Price £999,000 Freehold

Situated within one acre of park like gardens Taylor Engley are pleased to present this truly spectacular, architecturally one-off designed detached bungalow. The property is situated tucked away in an enviable position in the heart of the village of Herstmonceux and is built to a high specification offering modern, energy efficient and light and airy living accommodation. Viewing is essential to appreciate the quality of this bespoke family home. EPC = B



The village of Windmill Hill and Herstmonceux is steeped in history and is home to Herstmonceux Castle, a brick-built castle dating from the 15th century and is believed to be one of the oldest significant brick buildings still standing in England. Royal Greenwich Observatory is located nearby and was built because of the expanse of clear sky Herstmonceux has to offer. Modern day amenities include an integrated health centre, community centre, local shops, bakery, cafes, beauty rooms and a traditional country pub. Windmill Hill offers fabulous walks affording stunning views, sunsets and riverside strolls nearby.

*** SCOPE FOR FOURTH BEDROOM SUBJECT TO PLANNING CONCENTS * UNDERFLOOR HEATING
 * ENERGY EFFICIENT AIR SOURCE HEAT PUMP * DOUBLE GLAZING * SLIDING SPACE SAVING
 INTERNAL DOORS ***



Wood effect front door to:

RECEPTION HALL

Impressive entrance with vaulted ceiling, glass landing, under stairs storage cupboard, entry video phone system for the electric gates, resin flooring with underfloor heating, double glazed window to front.

CLOAKROOM/WC

Modern white suite comprising low level flush WC, washbasin with cupboard below, wall mounted cupboard, window to front, resin flooring with underfloor heating, towel rail.

OPEN PLAN LIVING ROOM AND KITCHEN

LIVING ROOM AREA

16'10" x 21'4" approx (5.13m x 6.50m approx)

Beautiful open plan room enjoying three sets of bifold doors all enjoying views over the garden, vaulted ceiling with large Velux window, resin flooring with under floor heating, television point.

KITCHEN AREA

12'09" x 10'07" (3.89m x 3.23m)

Fitted with a range of modern high gloss cupboards and drawers, feature kitchen island with one and a half bowl sink unit and breakfast bar area, built-in Neff oven and microwave, Fisher Paykel integrated dishwasher drawer, composite work surfaces, space for American style fridge freezer, resin flooring with underfloor heating.

UTILITY ROOM

9'08" x 5'10" (2.95m x 1.78m)

Fitted with a range of cupboards, work surfaces, space for washing machine, energy efficient heat pump, electric fuse board, resin floor with underfloor heating.

MASTER BEDROOM SUITE

14'10" x 9'10" (4.52m x 3.00m)

Double glazed doors with internal blinds opening to garden, resin floor with underfloor heating, this rooms flows through to the dressing room.

DRESSING ROOM

11'10" x 6' (3.61m x 1.83m)

Double glazed window to side, resin floor with underfloor heating, open fitted wardrobes offering a range of drawers and hanging space.

EN-SUITE

10'01" x 5'10" (3.07m x 1.78m)

Large walk in shower with drencher shower head and side jets, double washbasin with drawers below, low level flush WC, built in cupboard with electric shaver point, resin floor with underfloor heating.

BEDROOM TWO

13'10"9'10" (4.22m3.00m)

Double glazed window with outlook to front with internal blinds, resin floor with underfloor heating, telephone point.

EN-SUITE

Low level flush WC, washbasin with drawers below, large shower cubicle, wall mounted cupboard, window to side, resin floor with underfloor heating.

From the reception hall an impressive staircase with glass balustrades rises to the feature glass walkway and chrome landing with vaulted ceiling.

POTENTIAL BEDROOM THREE

21'07" x 14'09" (6.58m x 4.50m)

Open plan room with vaulted ceiling, double glazed window to side, eaves storage.

POTENTIAL SITTING ROOM/BEDROOM FOUR

14'09" x 13'07" max (4.50m x 4.14m max)

Open plan room with large double glazed windows and doors opening on to a covered spacious sun balcony, enjoying views over the garden.

OUTSIDE

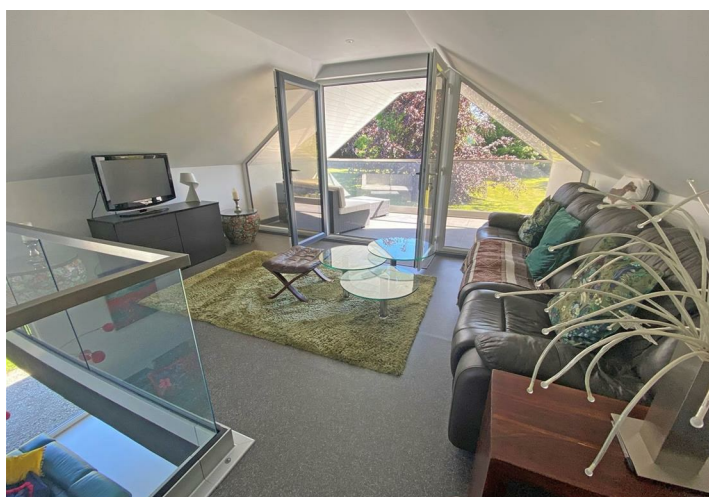
Electric gates to front entrance, parking area, garage with electric door to front, power and light. Large part flint/part oak built shed with a pitch roof. The stunning gardens wrap around the property, with areas of wild flowers, lawn, mature specimen trees, well stocked flower beds, impressive Japanese style garden area with central water feature and undercover seating area.

MEASUREMENT DISCLAIMER

NB. For clarification, we wish to inform prospective purchasers that we have prepared these sales particulars & floor plans as a general guide. We have not carried out a detailed survey nor tested the services, appliances & specific fittings. All measurements are approximate and into bays, alcoves and occasional window spaces where appropriate. Room sizes cannot be relied upon for carpets and furnishings.

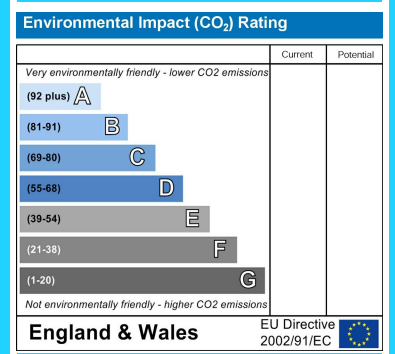
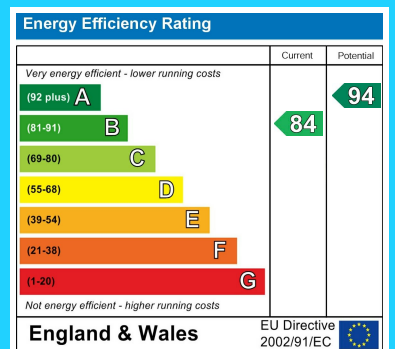
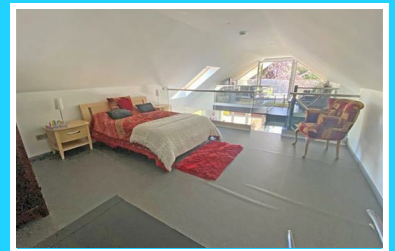
COUNCIL TAX BAND

This property is currently rated by Wealden District Council at Band D.









We are open 8.45 a.m - 5.45 p.m weekdays 9.00 a.m - 5.30 p.m Saturdays

These particulars are issued on the strict understanding that all negotiations are conducted through Taylor Engley. They do not constitute whole or part of an offer or contract. They are believed to be correct but are not to be relied on as statements and representations of fact and their accuracy is not guaranteed.

Any intending purchaser must satisfy himself by inspection or otherwise as to their correctness.

Taylor Engley is a trading name of Taylor Engley Limited, registered office: Railview Lofts, 19c Commercial Road, Eastbourne, East Sussex, BN21 3XE, company number 5477238, registered in England and Wales.

Also at: 6 Cornfield Road, Eastbourne, East Sussex BN21 4PJ ☎(01323) 722222 Fax: (01323) 722226

