

"Estate Agency is evolving...evolve with us"



2 6 St. Marys Road, Newquay TR7 1JU

£675 Per month

AVAILABLE IMMEDIATELY IS THIS SPACIOUS ONE BEDROOM APARTMENT CONVENIENTLY LOCATED ON THE EDGE OF NEWQUAY TOWN CENTRE.

****AS OUR PHONE LINES ARE EXTREMELY BUSY, TO ENQUIRE ABOUT A VIEWING PLEASE NAVIGATE TO THE EMAIL AGENT TAB ON THE LISTING AND FILL OUT THE SHORT FORM, ENSURE TO INPUT SOME INFORMATION ON YOUR CURRENT CIRCUMSTANCE AND ONE OF OUR AGENTS WILL BE IN CONTACT WITH YOU****

PROPERTY TYPE: Flat

RECEPTIONS: 1 / **BEDROOMS:** 1 / **BATHROOMS:** 1

FEATURES:

- 1 BEDROOM APARTMENT
- OUTDOOR DECKED TERRACE
- TOWN LOCATION
- COUNCIL TAX BAND A
- GAS CENTRAL HEATING

01637 877754

info@momovenewquay.co.uk

www.momove.co.uk

"Estate Agency is evolving...evolve with us"



DESCRIPTION:

AVAILABLE IMMEDIATELY, A LOVELY EXAMPLE OF A MODERN APARTMENT THAT BENEFITS FROM ITS OWN TERRACED BALCONY WITH VIEW OVER THE TWON TOWARDS NEWQUAY BAY.

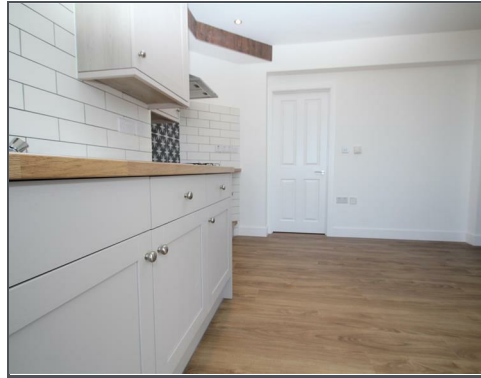
As our phone lines are extremely busy, to enquire about a viewing please navigate to the email agent tab on the listing and fill out the short form, ensure to input some information on your current circumstance and one of our agents will be in contact with you

Rent £675 + bills
Security Deposit £775
Council Tax - Band A
EPC rating: C

*Tenants will be responsible for all bills including, gas, water, electric, broadband, council tax etc.

01637 877754
info@momovenewquay.co.uk
www.momove.co.uk

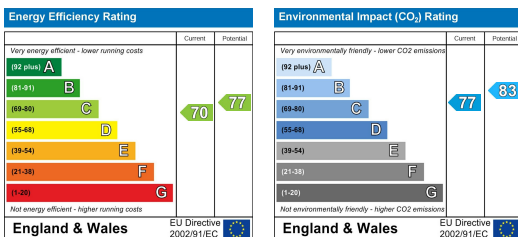
"Estate Agency is evolving...evolve with us"



"Estate Agency is evolving...evolve with us"



FLOORPLAN:



These particulars, whilst believed to be accurate are set out as a general outline only for guidance and do not constitute any part of an offer or contract. Intending purchasers should not rely on them as statements of representation of fact, but must satisfy themselves by inspection or otherwise as to their accuracy. No person in this firm's employment has the authority to make or give any representation or warranty in respect of the property.

