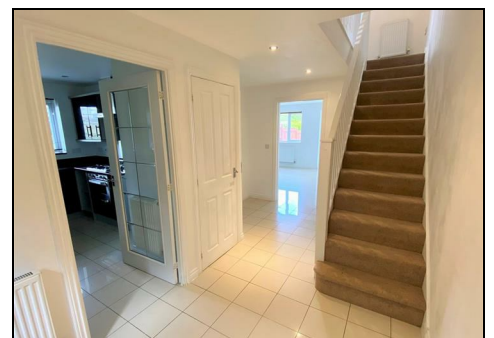


62 Cavendish Crescent, Newquay, Cornwall TR7 3DS



Modern semi-detached 3 bedroom house on the outskirts of Newquay.

£1,395 PCM



The property is unfurnished and is available from late May for long term let. The deposit is equivalent to a month's rent.

To arrange a viewing on this or any of our other properties please complete the Tenancy Application Form on the Start and Co home page at www.starts.co.uk.

