



10, Hyde Park Square,  
, W2

£3,650 Per Week,

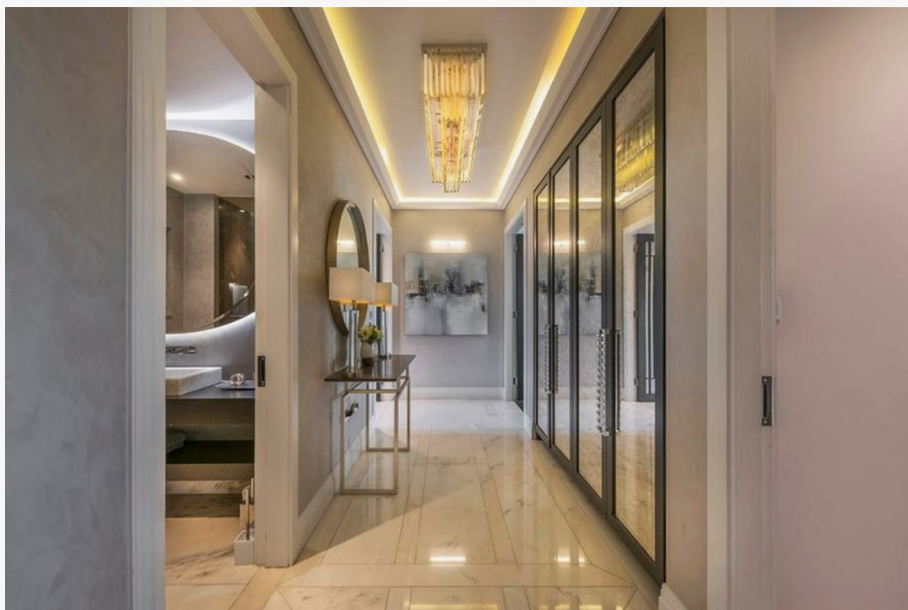
NAPIER WATT

T: 0207 935 0011  
E: [enquiries@napierwatt.co.uk](mailto:enquiries@napierwatt.co.uk)  
W: [napierwatt.co.uk](http://napierwatt.co.uk)

35 Berkeley Square, Mayfair, London, W1J 5BF







## Description

An outstanding three bedroom lateral apartment, situated on the second floor of a beautiful white stucco fronted building, with exceptional views over Hyde Park Square. This spacious apartment has been finished to the highest specification throughout, and benefits from lift access and residential porter. The apartment is entered by a beautiful entrance hall with impressive marble flooring, at the end of which is a stunning reception room with large bay windows overlooking Hyde Park Square, allowing for an abundance of natural light to fill the room. The reception room also features beautiful bespoke cabinetry and wood flooring and is connected to a separate dining room. The apartment also comprises a spacious and fully fitted kitchen with top of the range appliances, a principal bedroom suite with built-in wardrobes and en suite bathroom with marble counter tops. There are also two further double bedrooms, one of which features an en suite shower room, a separate guest shower room and utility. The apartment benefits from access to the private communal gardens as well as an underground parking space.

3 Bedrooms : En Suite Shower Room : En Suite Bathroom : Shower Room : Reception Room : Dining Room : Kitchen : Porter : Communal Gardens : Lift : Parking

## Key Features

- UNDERGROUND PARKING
- ACCESS TO PRIVATE GARDENS
- LIFT ACCESS
- PORTER
- AIR CONDITIONING

## Terms

Fees & Charges: Tenancies exceeding £100,000 Per annum £480 Inc VAT, Tenancies where a company is a tenant £480 Inc VAT.



Approx Gross Internal Area 1934 Sq Ft - 179.67 Sq M

For Illustration Purposes Only - Not To Scale  
www.goldlens.co.uk  
Ref. No. 016971

IMPORTANT: We would inform prospective purchasers that these sales particulars have been prepared as a general guide only. A detailed survey has not been carried out, nor the services, appliances and fittings tested. Room sizes should not be relied upon for furnishing purposes and are approximate. If floor plans are included, they are for guidance only and illustration purposes only and may not be to scale. If there are any important matters likely to affect your decision to buy, please contact us before viewing the property.