



1-4, Eaton Square,  
Belgravia, SW1W

£3,500 Per Week,

NAPIER WATT

T: 0207 935 0011  
E: [enquiries@napierwatt.co.uk](mailto:enquiries@napierwatt.co.uk)  
W: [napierwatt.co.uk](http://napierwatt.co.uk)

35 Berkeley Square, Mayfair, London, W1J 5BF













## Description

A large four-bedroom apartment on the second floor of a well-maintained building (with lift and porter) at the eastern end of Belgravia's most prestigious garden square that offers 2,257 square feet (210 sq m) of newly decorated accommodation with wooden floors in the principal rooms.

Eaton Square is widely regarded as the jewel in Belgravia's crown and undoubtedly one of the capitals most desirable residential addresses, just a short distance from the internationally renowned shops and boutiques of Knightsbridge as well as the open space of Hyde Park. There are excellent public transport links nearby in Victoria and Sloane Square, whilst nearby Elizabeth Street offers a range of upmarket shops and restaurants for day-to-day conveniences. 4 bedrooms, 3 bathrooms, 2 reception rooms, 2,257 sq ft / 209 sq m, Kitchen, Lift, Porter, Access to communal gardens.

Westminster Council Tax Band H. EPC Rating D.

## Key Features

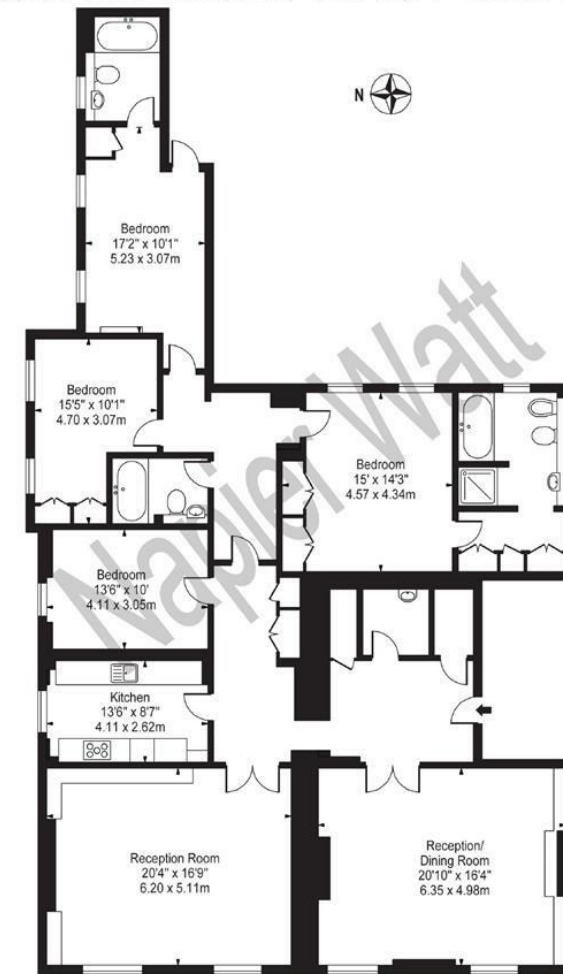
- SQUARE VIEWS
- PORTER
- LIFTS
- 2ND FLOOR
- FURNITURE AT ADDITIONAL COST

## Terms

Fees & Charges: Tenancies exceeding £100,000 Per annum £480 inc VAT, Tenancies where a company is a tenant £480 Inc VAT.

## Eaton Square

Approx. Gross Internal Area 2257 Sq Ft - 209.68 Sq M



Second Floor  
For Illustration Purposes Only - Not To Scale

This floor plan should be used as a general outline for guidance only and does not constitute in whole or in part an offer or contract. Any intending purchaser or lessee should satisfy themselves by inspection, searches, enquiries and full survey as to the correctness of each statement. Any areas, measurements or distances quoted are approximate and should not be used to value a property or be the basis of any sale or let.

IMPORTANT: We would inform prospective purchasers that these sales particulars have been prepared as a general guide only. A detailed survey has not been carried out, nor the services, appliances and fittings tested. Room sizes should not be relied upon for furnishing purposes and are approximate. If floor plans are included, they are for guidance only and illustration purposes only and may not be to scale. If there are any important matters likely to affect your decision to buy, please contact us before viewing the property.