



THE PHOENIX, BARRATT STREET, MARYLEBONE
W1U

£875 Per Week

T. +44 (0) 20 7935 0011
E. enquire@napierwatt.co.uk
WWW.NAPIERWATT.CO.UK

NAPIER WATT

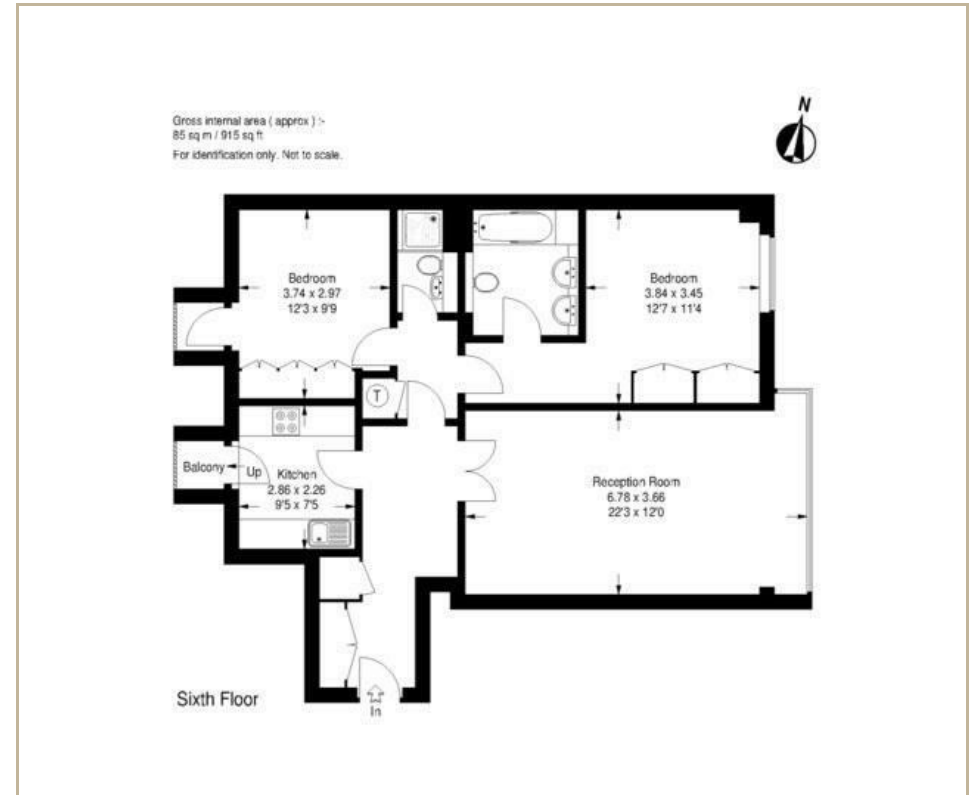
PROPERTY CONSULTANTS

Description

A 2 bedroom, 2 bathroom sixth floor apartment with lift and porter well located for Bond Street station and Oxford Street. The apartment further benefits from private underground parking. Bird Street is conveniently located for the many amenities, restaurants and shops offered by Oxford Street and the surrounding area. The

closest Underground stations are Bond Street (Central and Jubilee lines), located 0.1 miles from the property and Oxford Circus (Bakerloo, Victoria and Central lines), located 0.4 miles from the property.

2 Bedrooms : En Suite Bathroom : Shower Room : Reception Room : Kitchen : Parking : Lift : Porter : 2 Balconies : EPC Rating C



TERMS

Fees & Charges: Tenancies exceeding £100,000 Per annum £480 inc VAT, Tenancies where a company is a tenant £480 inc VAT.

For Clarification we wish to inform prospective purchasers that we have prepared these sales particulars as a general guide. We have not carried out a survey, nor tested the services, appliances and specific fittings. Room sizes are approximate and rounded: they are taken between internal wall surfaces and therefore include cupboards/shelves, etc. Accordingly, they should not be relied upon for carpets and furnishings. Formal notice is given that all fixtures and fittings, carpeting, curtains/blinds and kitchen equipment, whether fitted or not, are deemed to be removable by the vendor unless specifically itemised within these sales particulars.

T. +44 (0) 20 7935 0011
E. enquire@napierwatt.co.uk
WWW.NAPIERWATT.CO.UK

NAPIER WATT
PROPERTY CONSULTANTS