



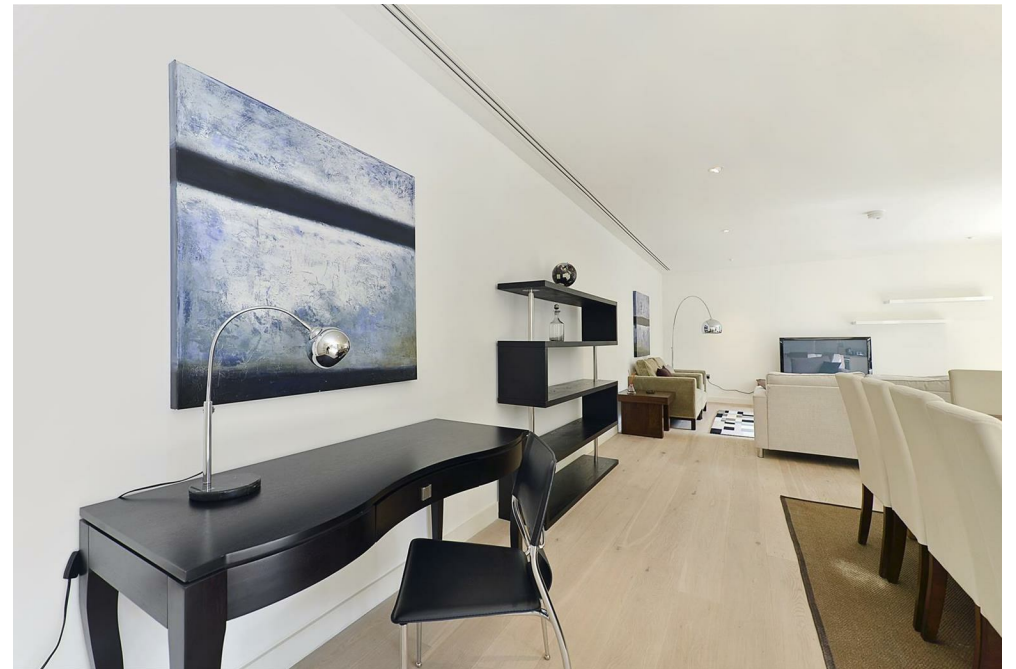
30, Portman Close,
Marylebone, W1H

£1,850 Per Week,

NAPIER WATT

T: 0207 935 0011
E: enquiries@napierwatt.co.uk
W: napierwatt.co.uk

35 Berkeley Square, Mayfair, London, W1J 5BF







Description

Occupying a lateral space of around 1,765 sqft./164 sqm. this is a superb second-floor apartment set within a prestigious modern block with 24 hour concierge. Boasting a large (42ft /13m long) reception room with open plan kitchen, three double bedrooms, three bathrooms and secure underground parking. Further benefits include floor to ceiling windows, comfort cooling, underfloor heating, wood floors, communal garden, and modern lifts. Located behind Portman Square, the apartment is a short walk to Selfridges, Oxford Street and Bond Street/ Marble Arch/ Baker Street underground stations as well as Marylebone and Paddington overground in close proximity. Some furnishings may differ from those advertised. Available unfurnished by negotiation.

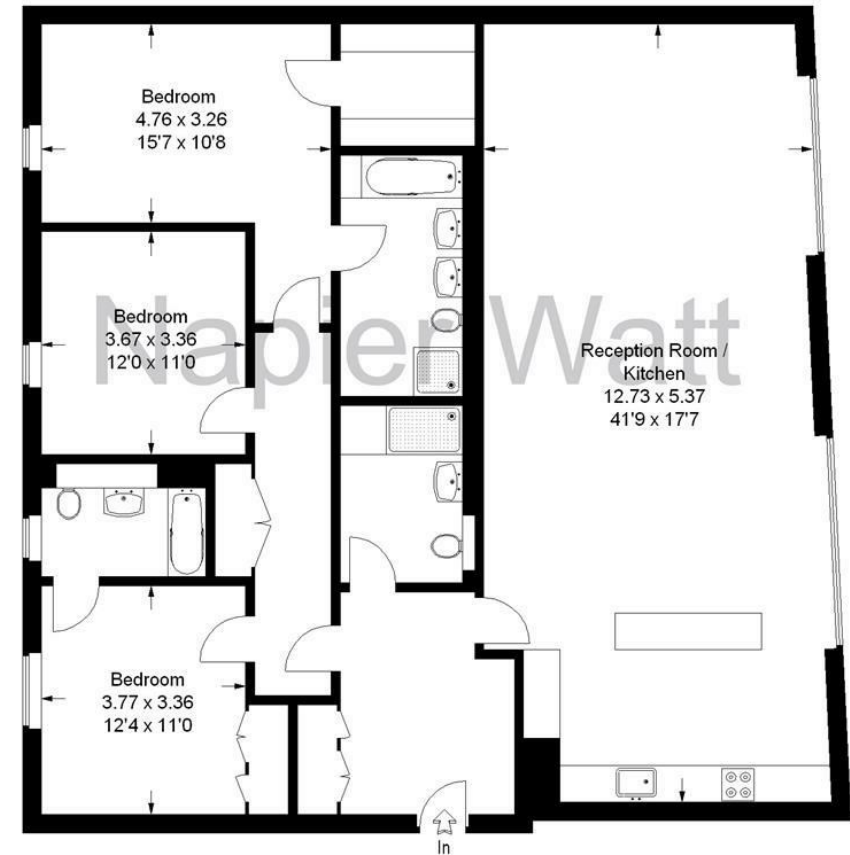
Key Features

- 24 HOUR PORTER
- AIR CONDITIONING
- LARGE LIFT
- AVAILABLE MID AUGUST
- SECURE PARKING
- SOME UNDER FLOOR HEATING
- FLOOR TO CEILING WINDOWS
- EXCLUSIVE BUILDING

Terms

George Street

Approximate Gross Internal Area :- 164 sq m / 1765 sq ft



This plan is for layout guidance only. Not drawn to scale unless stated.

Windows & door openings are approximate.

Whilst every care is taken in the preparation of this plan, please check all dimensions, shapes & compass bearings before making any decisions reliant upon them. (ID11813)

IMPORTANT: We would inform prospective purchasers that these sales particulars have been prepared as a general guide only. A detailed survey has not been carried out, nor the services, appliances and fittings tested. Room sizes should not be relied upon for furnishing purposes and are approximate. If floor plans are included, they are for guidance only and illustration purposes only and may not be to scale. If there are any important matters likely to affect your decision to buy, please contact us before viewing the property.