



36, Devonshire Place,
, W1G

Asking Price £1,750,000, Leasehold

NAPIER WATT

T: 0207 935 0011
E: enquiries@napierwatt.co.uk
W: napierwatt.co.uk

35 Berkeley Square, Mayfair, London, W1J 5BF







Description

An exceptionally bright and airy, two double bedroom, two bathroom apartment occupying the entire second floor of an imposing Georgian town house located in the heart of Marylebone Village.

The property is offered in good decorative condition with a contemporary, modern interior with wood floors through out, well fitted kitchen and bathrooms and direct lift access into the apartment.

It comprises an open plan kitchen/ reception room with lovely original features and high spec kitchen, master bedroom with en suite shower room and separate dressing room, second double bedroom and second bathroom. Underfloor heating throughout.

Entrance Hall : Reception Room : Open Plan Kitchen : Master Bedroom With Dressing Room and Ensuite Shower Room : Second Double Bedroom : Bathroom : Direct Lift Access : EPC Rating C

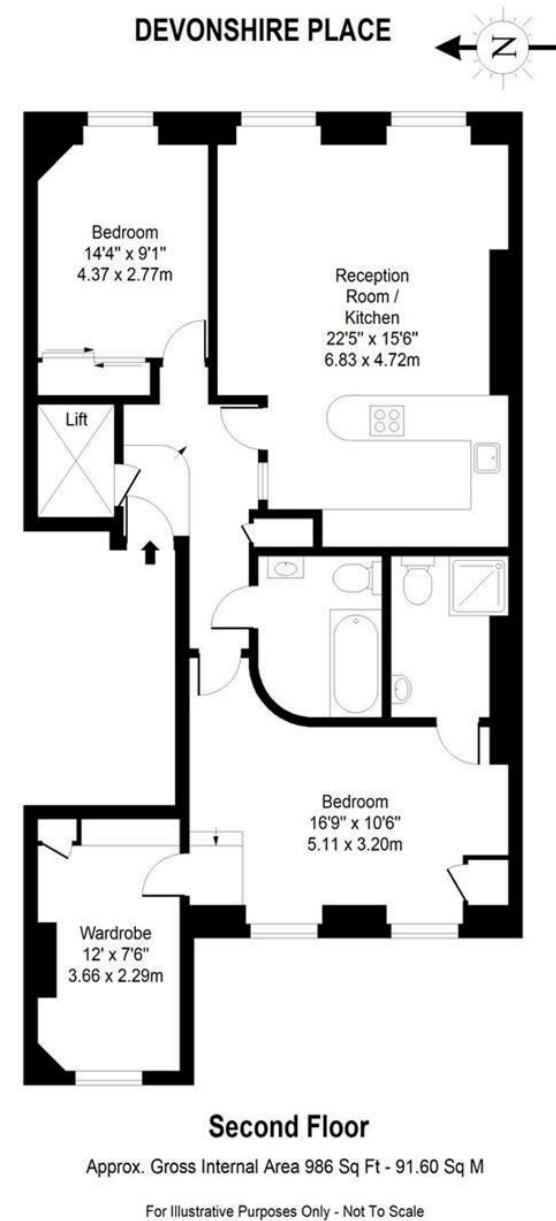
Key Features

- BRIGHT AND AIRY APARTMENT
- HEART OF MARYLEBONE VILLAGE
- DIRECT LIFT ACCESS
- LOW SERVICE CHARGE
- GOOD CONDITION
- SECOND FLOOR
- LONG LEASE

Terms

Service Charge £1,316 PER HALF YEAR

Leasehold 147 years



IMPORTANT: We would inform prospective purchasers that these sales particulars have been prepared as a general guide only. A detailed survey has not been carried out, nor the services, appliances and fittings tested. Room sizes should not be relied upon for furnishing purposes and are approximate. If floor plans are included, they are for guidance only and illustration purposes only and may not be to scale. If there are any important matters likely to affect your decision to buy, please contact us before viewing the property.