



, 24 George Street,
, W1U

£650 Per Week,

NAPIER WATT

T: 0207 935 0011
E: enquiries@napierwatt.co.uk
W: napierwatt.co.uk

35 Berkeley Square, Mayfair, London, W1J 5BF







Description

Sole Agents Napier Watt are pleased to offer this exceptionally bright, high ceilinged, one bedroom third floor apartment in a prime location just off Marylebone High Street.

This third floor apartment comprises a open plan kitchen/reception room with wood floors and high ceilings. No 24 is very well maintained converted house.

The property is located within 100m off sought after Marylebone High Street, and 50m off leafy Manchester Square and the world famous Wallace Collection.

Entrance Hall : 1 Bedrooms : 1 Bathroom : 1 Reception Rooms : EPC C ; Council Tax Band E

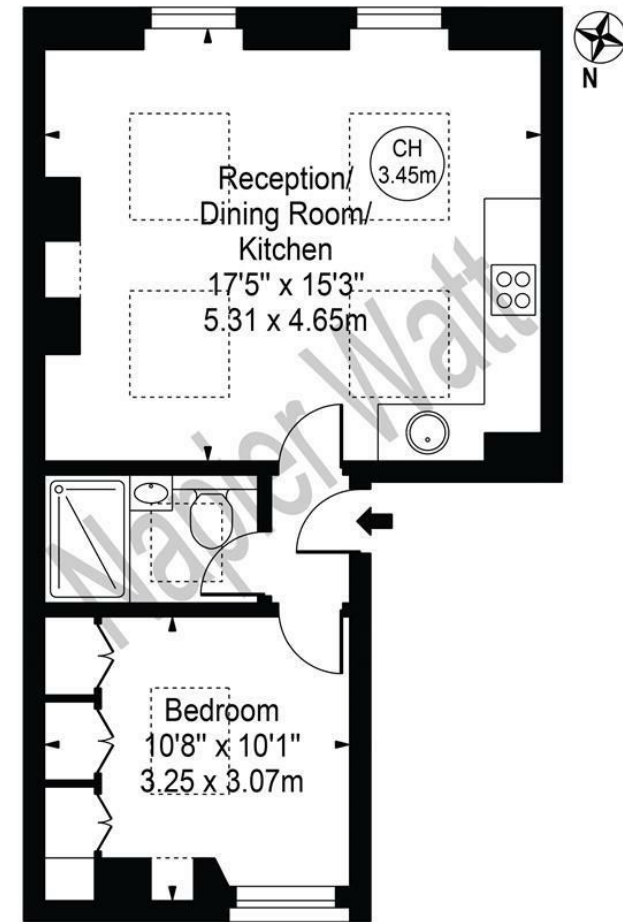
Key Features

- NEXT TO MANCHESTER SQUARE
- TWO MIN FROM SELFRIDGES
- PERIOD FEATURES
- LONG LET
- BY THE WALLACE COLLECTION
- HIGH CEILINGS
- AVAILABLE NOW

Terms

Fees & Charges: Tenancies exceeding £100,000 Per annum £480 inc VAT, Tenancies where a company is a tenant £480 Inc VAT.

George Street
Approx. Gross Internal Area 421 Sq Ft - 39.11 Sq M



Third Floor

For Illustration Purposes Only - Not To Scale

This floor plan should be used as a general outline for guidance only and does not constitute in whole or in part an offer or contract. Any intending purchaser or lessee should satisfy themselves by inspection, searches, enquiries and full survey as to the correctness of each statement. Any areas, measurements or distances quoted are approximate and should not be used to value a property or be the basis of any sale or let.

IMPORTANT: We would inform prospective purchasers that these sales particulars have been prepared as a general guide only. A detailed survey has not been carried out, nor the services, appliances and fittings tested. Room sizes should not be relied upon for furnishing purposes and are approximate. If floor plans are included, they are for guidance only and illustration purposes only and may not be to scale. If there are any important matters likely to affect your decision to buy, please contact us before viewing the property.