



Chase Court, 28-29 Beaufort Gardens,
Knightsbridge, SW3

Asking Price £2,500,000, Leasehold - Share of Freehold

NAPIER WATT

T: 0207 935 0011
E: enquiries@napierwatt.co.uk
W: napierwatt.co.uk

35 Berkeley Square, Mayfair, London, W1J 5BF







Description

Tucked away in a serene cul-de-sac near the sophisticated retail and amenities of Brompton Road, this contemporary penthouse in Knightsbridge offers a secluded retreat.

Enhanced by a lift and day porter, the residence showcases spacious interiors flooded with natural light.

The open-plan living and dining area seamlessly connects to a South-facing terrace, providing breathtaking views of the London skyline. The property also includes a separate kitchen, a south-facing principal bedroom with an ensuite and terrace access, and a secondary bedroom with a shared bathroom for guests.

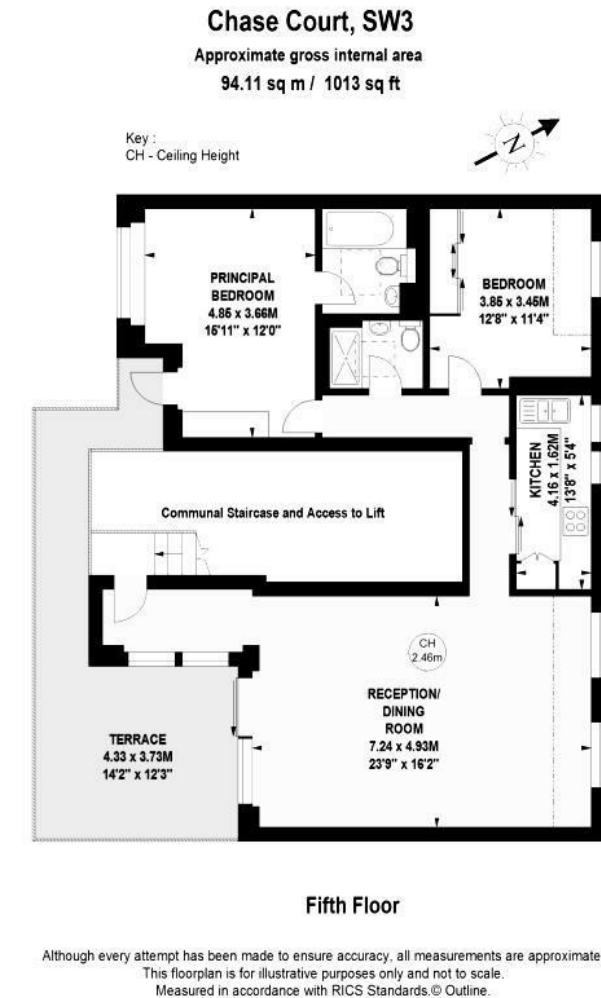
EPC Rating D.

Key Features

- SPACIOUS TERRACE
- NEWLY REDECORATED
- LIFT
- AIR CONDITIONING
- QUIET CUL DE SAC
- MINUTES WALK FROM HARRODS

Terms

Leasehold, 946 years, plus share of Freehold



IMPORTANT: We would inform prospective purchasers that these sales particulars have been prepared as a general guide only. A detailed survey has not been carried out, nor the services, appliances and fittings tested. Room sizes should not be relied upon for furnishing purposes and are approximate. If floor plans are included, they are for guidance only and illustration purposes only and may not be to scale. If there are any important matters likely to affect your decision to buy, please contact us before viewing the property.