



17, Lowndes Square,  
Belgravia, SW1X

£2,850 Per Week,

NAPIER WATT

T: 0207 935 0011  
E: [enquiries@napierwatt.co.uk](mailto:enquiries@napierwatt.co.uk)  
W: [napierwatt.co.uk](http://napierwatt.co.uk)

35 Berkeley Square, Mayfair, London, W1J 5BF









## Description

Superb three-bedroom triplex with a stunning terrace in one of London's most desirable squares. The apartment of approximately 2,001sq ft is laid out over the second, third and fourth floors of this prestigious address. As you enter the home, you're greeted by a substantial east-facing terrace and guest W.C. Upstairs, the third floor hosts the living space, with an enormous living room which leads through to a light and airy dining room which open plan with the kitchen. The top floor of the apartment consists of a vast master bedroom with en-suite and plenty of storage, then two further en-suite double bedrooms. This white Stucco-fronted building, set in the heart of Belgravia, benefits from a lift and is moments from the luxurious shops of Sloane Street as well as Knightsbridge underground station. Residents also have with access to the tranquil communal gardens. Available, furnished.

3 Bedrooms : 3 Bathrooms : Terrace : Guest W.C. : Lift : Access to Communal Gardens : Westminster Council Tax Band H : EPC rating D

## Key Features

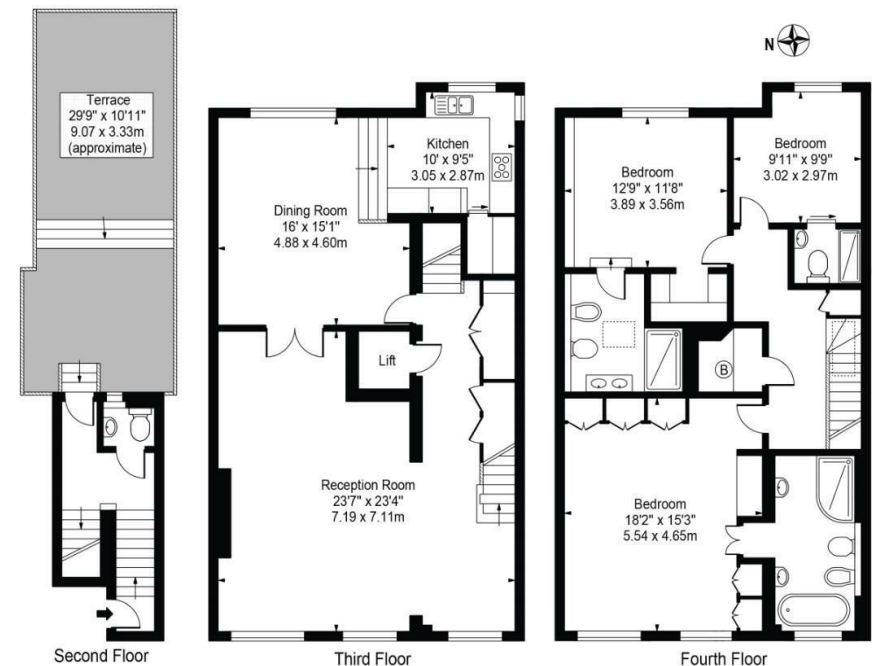
- AIR-CONDITIONING
- ROOF TERRACE
- DIRECT ACCESS LIFT
- SEPERATE STUDIO
- TRIPLEX

## Terms

Fees & Charges: Tenancies exceeding £100,000 Per annum £480 inc VAT, Tenancies where a company is a tenant £480 Inc VAT.

## Lowndes Square

Approx. Gross Internal Area 2,001 Sq Ft - 185 Sq M



For Illustration Purposes Only - Not To Scale

This floor plan should be used as a general outline for guidance only and does not constitute in whole or in part an offer or contract. Any intending purchaser or lessee should satisfy themselves by inspection, searches, enquiries and full survey as to the correctness of each statement. Any areas, measurements or distances quoted are approximate and should not be used to value a property or be the basis of any sale or let.

IMPORTANT: We would inform prospective purchasers that these sales particulars have been prepared as a general guide only. A detailed survey has not been carried out, nor the services, appliances and fittings tested. Room sizes should not be relied upon for furnishing purposes and are approximate. If floor plans are included, they are for guidance only and illustration purposes only and may not be to scale. If there are any important matters likely to affect your decision to buy, please contact us before viewing the property.