



Howard Building, 368 Queenstown Road,
Chelsea Bridge Wharf, SW11

£735 Per Week,

NAPIER WATT

T: 0207 935 0011
E: enquiries@napierwatt.co.uk
W: napierwatt.co.uk

35 Berkeley Square, Mayfair, London, W1J 5BF







Description

A spacious two bedroom, two bathroom apartment located on the third floor in the Howard Building at Chelsea Bridge Wharf. This lovely apartment has a well equipped open plan kitchen/living area with full length windows. A good sized balcony over looking the peaceful views of the piazza water gardens. The spacious master bedroom includes an en-suite bathroom and has a large walk-in wardrobe. Second bedroom. Separate shower room/guest WC situated in the hallway. Shiny wooden floor laid throughout living area and hallway. Lots of storage. Chelsea Bridge Wharf is London's most glamorous riverside development located just 0.75 miles from Sloane Square. There is a 24 hour concierge and security service. Secure underground car parking is available (extra cost). A luxury four star hotel is located at the development.

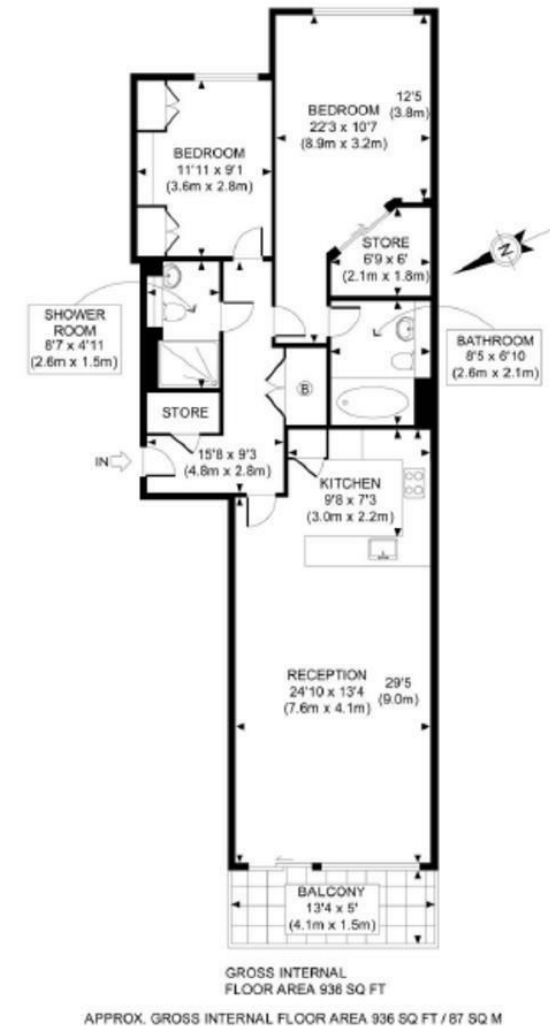
London Borough of Wandsworth F

Key Features

- PASSENGER LIFT
- PARKING BY SEPERATE NEGOTIATION
- 24-HOUR CONCIERGE
- BALCONY
- PART RIVER VIEWS

Terms

Fees & Charges: Tenancies exceeding £100,000 Per annum £480 inc VAT, Tenancies where a company is a tenant £480 Inc VAT.



IMPORTANT: We would inform prospective purchasers that these sales particulars have been prepared as a general guide only. A detailed survey has not been carried out, nor the services, appliances and fittings tested. Room sizes should not be relied upon for furnishing purposes and are approximate. If floor plans are included, they are for guidance only and illustration purposes only and may not be to scale. If there are any important matters likely to affect your decision to buy, please contact us before viewing the property.