



Manor House, Marylebone Road,  
, NW1

£5,500 Per Month,

NAPIER WATT

T: 0207 935 0011  
E: [enquiries@napierwatt.co.uk](mailto:enquiries@napierwatt.co.uk)  
W: [napierwatt.co.uk](http://napierwatt.co.uk)

35 Berkeley Square, Mayfair, London, W1J 5BF







## Description

Spacious three-bedroom apartment on the ground floor in this sought after mansions block. This furnished lateral apartment benefits from wooden flooring throughout and comprises a large double reception room, fitted kitchen, master bedroom with en-suite, two further bedrooms, two shower rooms and a guest cloakroom. This secure mansion block is moments from Marylebone train station and is a short walk from Edgware Road underground station.

Living Room : Kitchen : Three Bedrooms : En-Suite : Two Shower Rooms : Guest W.C. : Westminster Council Band G

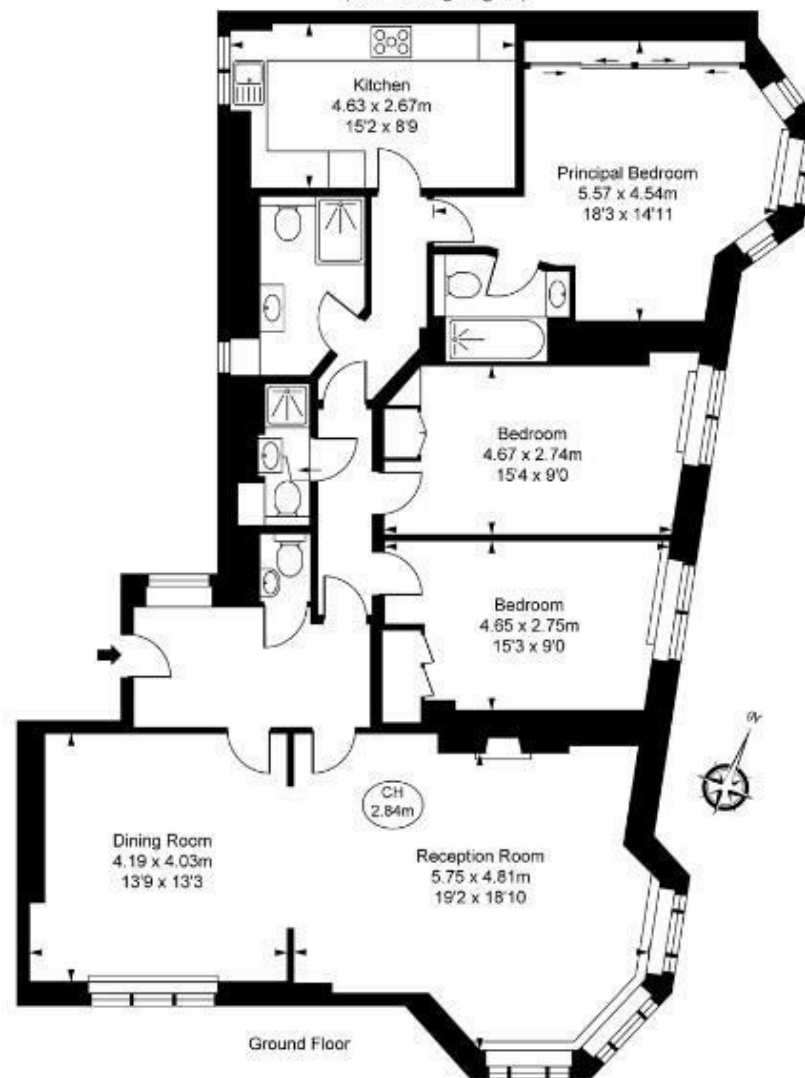
## Key Features

- PORTER
- CLOSE TO TRANSPORT LINKS
- LIFT
- SPACIOUS

## Terms

Fees & Charges: Tenancies exceeding £100,000 Per annum £480 inc VAT, Tenancies where a company is a tenant £480 Inc VAT.

Manor House,  
Marylebone Road, NW1  
Approximate Gross Internal Area  
130.66 sq m / 1,406 sq ft  
( CH = Ceiling Heights )



IMPORTANT: We would inform prospective purchasers that these sales particulars have been prepared as a general guide only. A detailed survey has not been carried out, nor the services, appliances and fittings tested. Room sizes should not be relied upon for furnishing purposes and are approximate. If floor plans are included, they are for guidance only and illustration purposes only and may not be to scale. If there are any important matters likely to affect your decision to buy, please contact us before viewing the property.