



Sophora House,, Chelsea Vista,,  
Battersea, SW11

Asking Price £1,850,000, Leasehold

NAPIER WATT

T: 0207 935 0011  
E: [enquiries@napierwatt.co.uk](mailto:enquiries@napierwatt.co.uk)  
W: [napierwatt.co.uk](http://napierwatt.co.uk)

35 Berkeley Square, Mayfair, London, W1J 5BF











## Description

SOLE AGENTS NAPIER WATT are pleased a stunning 5th floor, park facing 3 bedroom, 2 bath apartment in this highly sought after modern development by Berkeley Homes. The development offers 24 hour security, concierge and leisure facilities. For security and to provide complete peace of mind, a dedicated 24-hour concierge service is on hand to respond to residents day-to-day needs.

This light and airy apartments has been expertly planned with exceptional attention to detail.

3 Bedrooms : En Suite Bathroom : Shower Room : Reception Room : Sun Room : Kitchen : Balcony : 24 Hour Concierge : Leisure Facilities : EPC Rating B : Wandsworth Band G

## Key Features

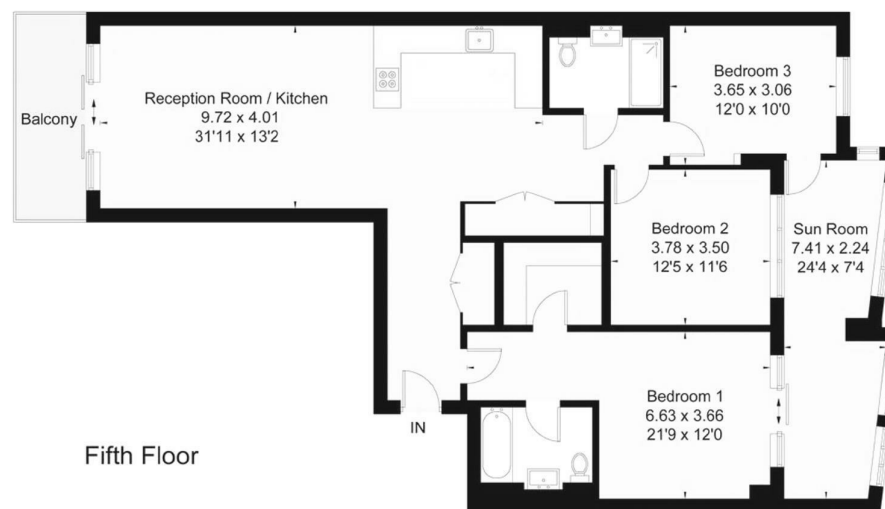
- BALCONY
- SUN ROOM
- LIFTS
- PARKING
- LEISURE FACILITIES
- 24 HOUR CONCIERGE
- AIR CONDITIONING

## Terms

999 years from 1 January 2016 ie 995 years remaining

## Queenstown Road, SW11

Gross Internal Area (approx) = 130.5 sq m / 1405 sq ft (Excluding Void & Shed)  
Balcony Area = 7 sq m / 75 sq ft  
For identification only. Not to scale.  
© Floorplanz Ltd



IMPORTANT: We would inform prospective purchasers that these sales particulars have been prepared as a general guide only. A detailed survey has not been carried out, nor the services, appliances and fittings tested. Room sizes should not be relied upon for furnishing purposes and are approximate. If floor plans are included, they are for guidance only and illustration purposes only and may not be to scale. If there are any important matters likely to affect your decision to buy, please contact us before viewing the property.