



3 Canalside Walk,
Paddington Basin, W2

£1,075 Per Week,







Description

We're pleased to present this stylish and modern apartment in the new development Canalside Walk. This fifth floor (with lift) property boasts views of the canal and comprises an open plan kitchen living room with balcony, master bedroom with en-suite, second double bedroom and a separate bathroom. The building is located on the opposite side of the canal to Paddington Station (Bakerloo Line, Circle Hammersmith & City Line) and benefits from comfort cooling, a communal business centre and communal roof terraces with outdoor gym. The building has a 24-hour porter and an underground car park, with a space included in the rent. Available, furnished.

2 Bedrooms : 2 Bathrooms : 24-Hour Concierge : Lift : Comfort Cooling : Underground Parking : Council Tax Band F : EPC Rating B

Key Features

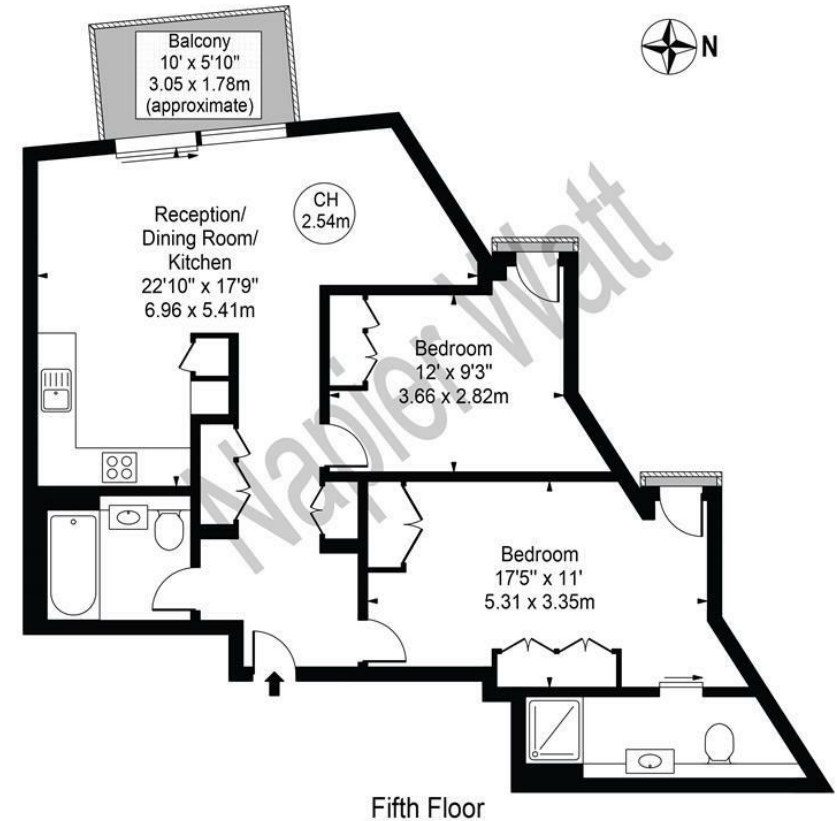
- SOUTH FACING VIEWS
- 5TH FLOOR WITH LIFTS
- COMMUNAL ROOF TOP TERRACE
- 24-HOUR PORTER
- BALCONY
- UNDERGROUND PARKING
- OUTDOOR GYM
- FURNISHED

Terms

Fees & Charges: Tenancies exceeding £100,000 Per annum £480 inc VAT, Tenancies where a company is a tenant £480 Inc VAT.

Canalside Walk

Approx. Gross Internal Area 831 Sq Ft - 77.20 Sq M



For Illustration Purposes Only - Not To Scale

This floor plan should be used as a general outline for guidance only and does not constitute in whole or in part an offer or contract. Any intending purchaser or lessee should satisfy themselves by inspection, searches, enquiries and full survey as to the correctness of each statement. Any areas, measurements or distances quoted are approximate and should not be used to value a property or be the basis of any sale or let.

IMPORTANT: We would inform prospective purchasers that these sales particulars have been prepared as a general guide only. A detailed survey has not been carried out, nor the services, appliances and fittings tested. Room sizes should not be relied upon for furnishing purposes and are approximate. If floor plans are included, they are for guidance only and illustration purposes only and may not be to scale. If there are any important matters likely to affect your decision to buy, please contact us before viewing the property.