



Bridgeman House, Radnor Terrace, Kensington, W14

£1,800,000, Leasehold

NAPIER WATT

T: 0207 935 0011

E: enquiries@napierwatt.co.uk

W: napierwatt.co.uk

35 Berkeley Square, Mayfair, London, W1J 5BF





Description

This two bedroom apartment (804 sq ft/ 75 sq m) is located on the 9th floor of this new landmark development on Kensington High Street. The spacious open-plan reception room has been beautifully designed to incorporate a kitchen, dining and living area, opening onto a terrace with excellent views. There are also two bedrooms, one ensuite and one underground parking space.

375 Kensington High Street is a luxurious new development located at the western end of Kensington, benefiting from 24 hour concierge and security, underground parking and a stunning leisure suite for residents only, comprising gymnasium, swimming pool, spa area, treatment rooms and cinema

Key Features

- 9TH FLOOR WITH LIFT
- RIGHT TO PARK
- COMFORT COOLING AND CLIMATE CONTROL
- 375 KENSINGTON HIGH STREET
- 24 HOUR CONCIERGE
- TERRACE WITH VIEWS
- LEISURE FACILITIES
- SWIMMING POOL AND GYM

Terms

TENURE

Leasehold, approximately 995 years remaining

SERVICE CHARGE

Bridgeman House, 375 Kensington High Street, W14

Gross internal area (approx.)

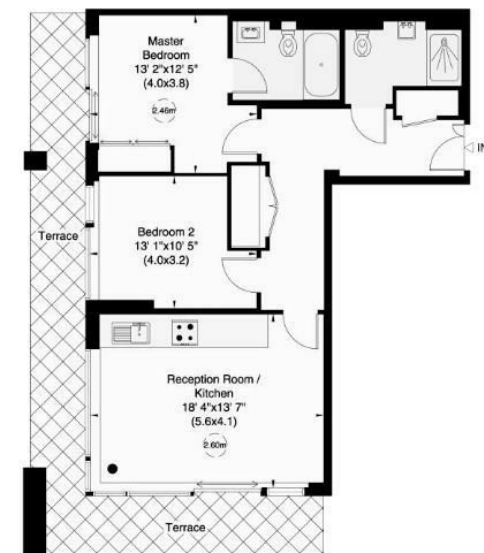
75 Sq m (804 Sq ft)

Terrace area (approx.)

24 Sq m (263 Sq ft)

For identification only, Not to Scale

Floor Plan by **capital group** 020 8671 7722



Ninth Floor

Not to scale, for guidance only and must not be relied upon as a statement of fact. All measurements and areas are approximate only (and have been prepared in accordance with the current edition of the RICS Code of Measuring Practice).

IMPORTANT: We would inform prospective purchasers that these sales particulars have been prepared as a general guide only. A detailed survey has not been carried out, nor the services, appliances and fittings tested. Room sizes should not be relied upon for furnishing purposes and are approximate. If floor plans are included, they are for guidance only and illustration purposes only and may not be to scale. If there are any important matters likely to affect your decision to buy, please contact us before viewing the property.