



10, Lancelot Place,  
Knightsbridge, SW7

Asking Price £5,750,000, Leasehold

NAPIER WATT

T: 0207 935 0011  
E: [enquiries@napierwatt.co.uk](mailto:enquiries@napierwatt.co.uk)  
W: [napierwatt.co.uk](http://napierwatt.co.uk)

35 Berkeley Square, Mayfair, London, W1J 5BF







## Description

Newly Refurbished and spacious two bedroom apartment situated on the third floor in one of the area's most sought-after residential buildings. This sensational apartment has been the subject of an extensive refurbishment programme and features a large open-plan double aspect reception room connected to a spacious dining room that is located just off the newly fitted kitchen. There are also two double bedrooms, the principal with a large en suite and the second bedroom with the shower room located directly opposite.

10 Lancelot Place is an extremely well-managed, purpose-built residential building offering 24 hour concierge and security. Additional amenities include secure underground parking, a fully equipped gym, swimming pool and spa facilities, including a sauna and a steam room. Set back from the Brompton Road, but located close to Harrods on one side and Hyde Park on the other, Lancelot Place occupies the ideal position for its residents. There is easy access to the many famous restaurants and shops in Knightsbridge, whilst also being a short distance from the green open spaces of Hyde Park.

## Key Features

- STUNNING INTERIOR DESIGN
- 24 HOUR PORTER
- THIRD FLOOR
- EXCELLENT SECURITY
- GYMNASIUM
- SWIMMING POOL
- LIFTS
- LONG LEASE

## Terms

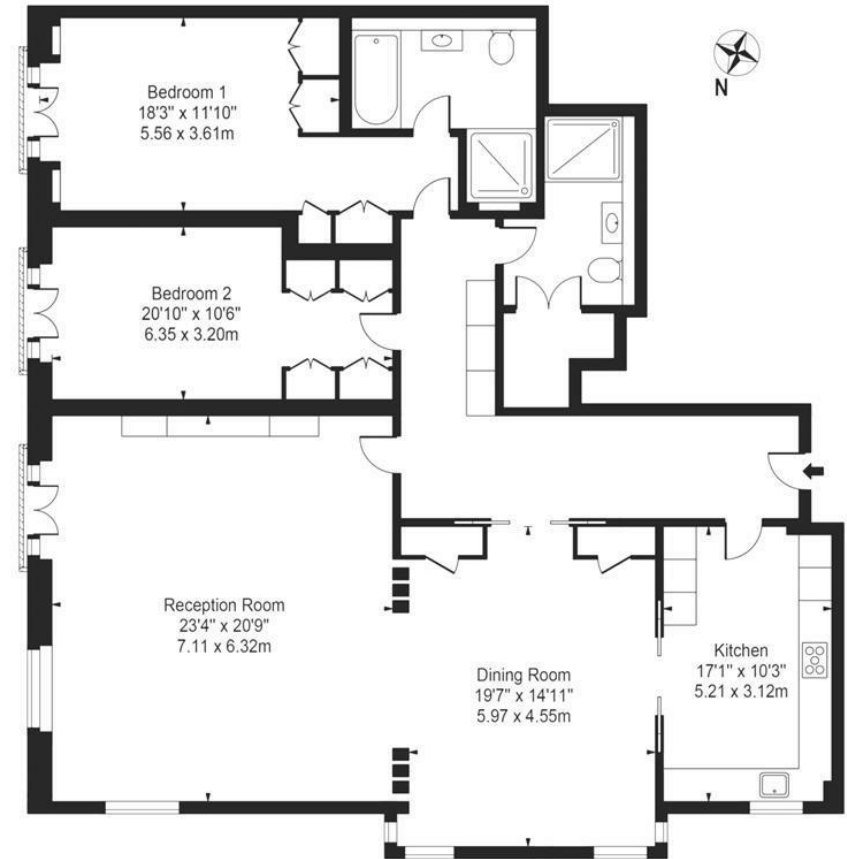
Leasehold : 999 years from 1 January 2006 ie 983 years

Service Charge : Approx £11,817 per half year

The flat benefits from designated carparking space number 2 under a separate lease, 999 years from 1st January 2006.

## Lancelot Place

Approx. Gross Internal Area 1970 Sq Ft - 183.02 Sq M



### Third Floor

For Illustration Purposes Only - Not To Scale

This floor plan should be used as a general outline for guidance only and does not constitute in whole or in part an offer or contract. Any intending purchaser or lessee should satisfy themselves by inspection, searches, enquiries and full survey as to the correctness of each statement. Any areas, measurements or distances quoted are approximate and should not be used to value a property or be the basis of any sale or let.

IMPORTANT: We would inform prospective purchasers that these sales particulars have been prepared as a general guide only. A detailed survey has not been carried out, nor the services, appliances and fittings tested. Room sizes should not be relied upon for furnishing purposes and are approximate. If floor plans are included, they are for guidance only and illustration purposes only and may not be to scale. If there are any important matters likely to affect your decision to buy, please contact us before viewing the property.