



99, Eaton Terrace,  
Belgravia, SW1W

Asking Price £5,995,000, Freehold

NAPIER WATT

T: 0207 935 0011  
E: [enquiries@napierwatt.co.uk](mailto:enquiries@napierwatt.co.uk)  
W: [napierwatt.co.uk](http://napierwatt.co.uk)

35 Berkeley Square, Mayfair, London, W1J 5BF











### Description

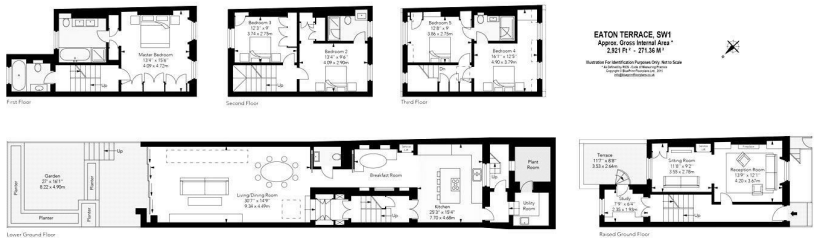
A superb five bedroom Grade II listed house with a large 30 ft family living-room and an attractive 27 ft garden and first floor terrace.

EPC Rating D.

### Key Features

- FREEHOLD
- GARDEN
- TERRACE
- STUDY
- UTILITY ROOM
- OUTSTANDING LOCATION
- IMMACULATE CONDITION

### Terms



IMPORTANT: We would inform prospective purchasers that these sales particulars have been prepared as a general guide only. A detailed survey has not been carried out, nor the services, appliances and fittings tested. Room sizes should not be relied upon for furnishing purposes and are approximate. If floor plans are included, they are for guidance only and illustration purposes only and may not be to scale. If there are any important matters likely to affect your decision to buy, please contact us before viewing the property.